

Korea's Think Tank For Transport and Logistics



**EASTS & EASTS-Japan
20th Anniversary International Symposium
"Future of Transportation in Asia"**

Korea's International Cooperation in Transportation Area

Oct. 24, 2014

VP for Int'l Cooperation & Regional Studies
ChoongYeol (Peter) Ye



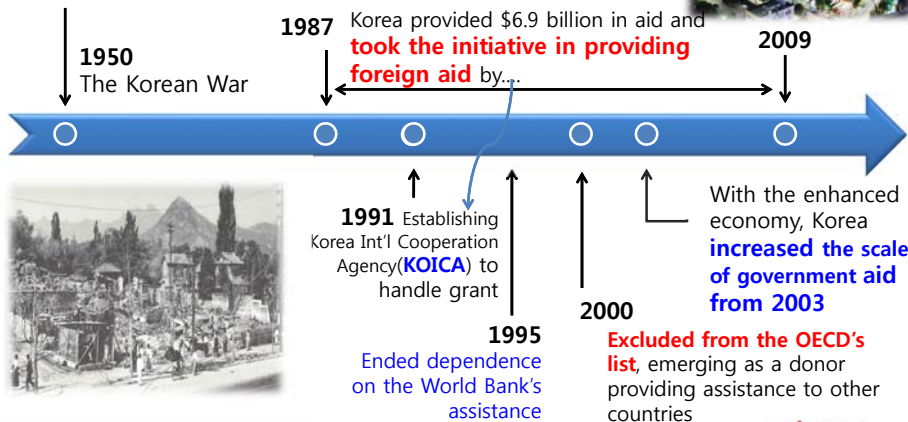
Contents

- I Introduction ODA of Korea
- II ODA in Transportation Sector
- III International Cooperation & Knowledge Sharing of KOTI

1. From a Recipient to a Donor Country

ODA was the only source of capital

- Received ODA(1945-1995) worth \$12 billion from the int'l community (US, UN, Japan, ...)



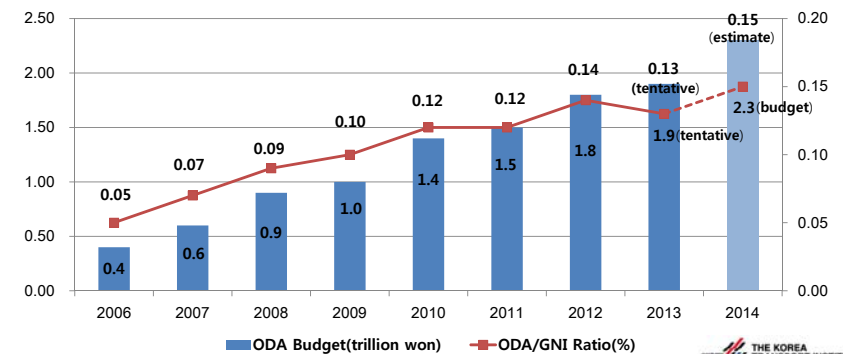
2. Increasing ODA

• Rapid growth of ODA scale with 20% CAGR

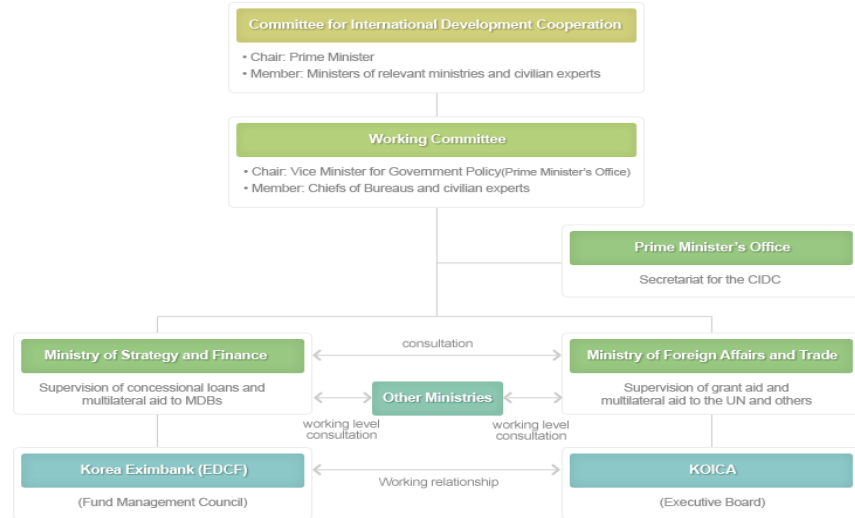
- earmarked \$652 million for 2015 (9% increase from 2014)
- 0.15% of GNI (2014)

• Korea's Promise for ODA by 2015

- Total volume: \$3 billion
- ODA/GNI: 0.25%



3. Structure of Korean ODA



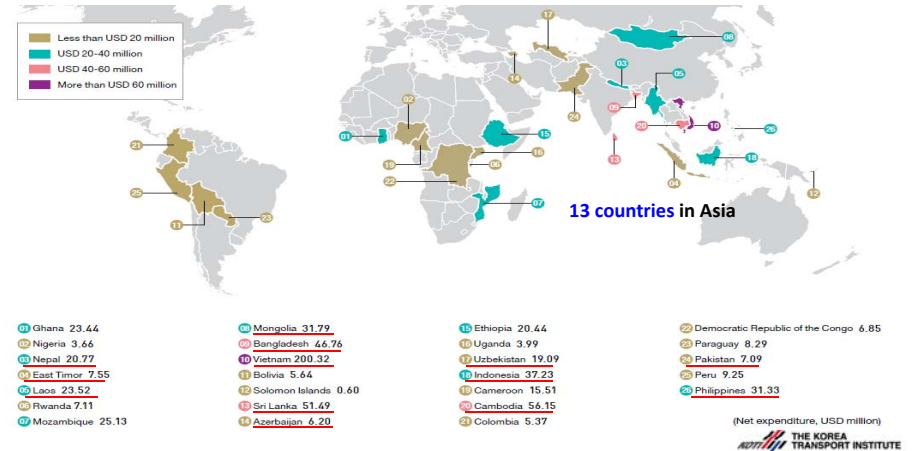
- Economic Development Cooperation Fund (EDCF)
 - Established in 1987 to handle concessional loans, Housed in the KEXIM Bank

Source: ODA Korea



4. Priority Partner Countries

- 26 priority partner countries out of 130 partner countries based on income level, political situation, diplomatic relations, and cooperation potential.
- To enhance effectiveness, 70% of ODA are provided on assisting those countries. (46.9% in Asia)



Contents

- I Introduction ODA of Korea
- II ODA in Transportation Sector**
- III International Cooperation & Knowledge Sharing of KOTI

1. Provision of ODA for Transport Sector



- ODA in the transport logistics sector has been **continuously increasing**.
- Expanded to **\$230 mil in 2011, 23.2% of assistance provided** to the social & economic infrastructure as well as service sector (2011).
 - 244.2 billion KRW in 2014

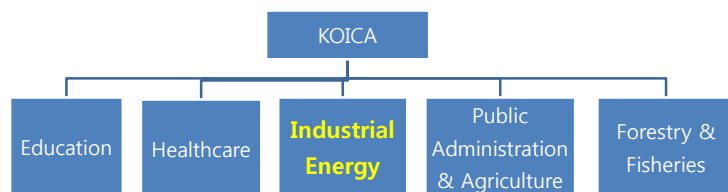
(Unit: \$1 million)

Distinction	2007	2008	2009	2010	2011
Total	490.5	539.2	581.1	900.6	989.6
Social Infrastructure & Service	265.6	238.5	278.5	395.9	416.3
Economic Infrastructure & Service	104.2	124.1	152.7	250.2	308.2
Transport & Logistics (Portion: %)	41.4 (8.4)	75.6 (14.2)	77.4 (13.3)	117.7 (13.1)	229.8 (23.2)

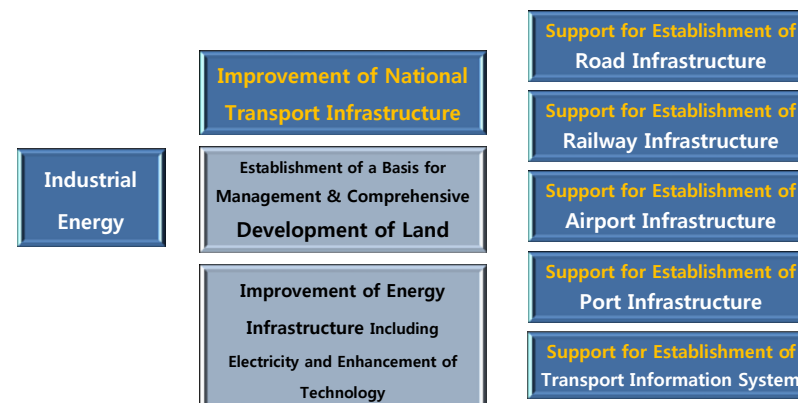


2. KOICA's Program in Transport Sector

- **Five main areas** eligible for assistance including education, healthcare, **industrial energy**, public administration, and agriculture, forestry and fisheries.
- **“Improvement of national transport infrastructure”** was targeted as a main **sub-area of industrial energy area** for the purpose of provision of grants.



3. Five Main Areas Subject to Assistance by KOICA



• Four types of assistance:

- **Transport projects: 12 projects** were conducted in **nine Asian countries** through 2012. \$30 million was provided (**concentrated on road projects**)
- Transport development consulting
- Invitation training
- Volunteer activities

4. Transport Projects by KOICA

(Unit: \$10,000)

Project	No.	Country	Project Name	Period	Project Cost
	1	Cambodia	The 3 rd Beltway Construction Project in Siem Reap	2012-2014	1,200
2	Laos	Road Construction Project in Lingshan, Vientiane	2010-2011	150	
3	Philippines	Busuanga Airport Development Project	2006-2008	300.0	

Development Consulting	No.	Country	Project Name	Period	Project Cost
	1	Paraguay	Railway Construction Feasibility Study	2011-2013	200.0
2	Indonesia	Jabotabek Railway Belt Line Improvement Master Plan	2011-2012	300.0	
3	Philippines	National Airport Development Master Plan Establishment	2011-2013	400.0	

Invitation Training	No.	Country	Project Name	Period	Project Cost
	1	Cambodia	Road Management & Maintenance Training	2010-2012	28.3
2	Tunisia	Railway Operation & Safety Management	2012	9.3	
3	-	Establishment of Comprehensive Transport Policy for Development of Green Growth-Based Transport Infrastructure	2012	13.6	

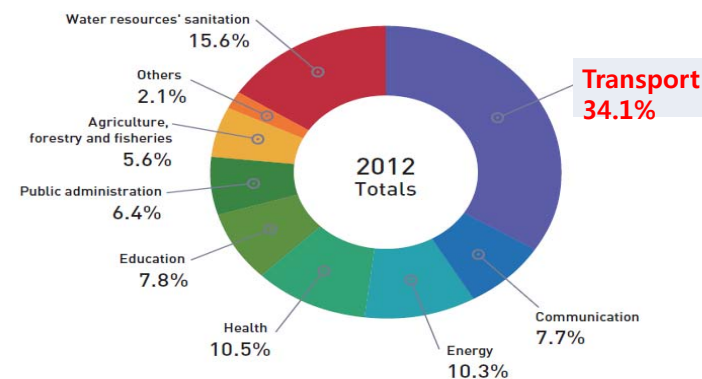
Volunteer Group	No.	Country	Project Name	Period	Project Cost
	1	Uzbekistan	Establishment of Aviation Data in Tashkent University (General)	2012	3.0
2	Mongolia	Ulaanbaatar City Transport Management Center Consulting	2012	4.0	

(Mid- to Long-Term)

5. Transport Cooperation by Export-Import Bank

• Economic Development Cooperation Fund Spending by Sector

- Account for 50% of bilateral ODA amounts
- 311 projects in 52 countries (10.1 trillion KRW)
- transport sector takes the highest portion, comprising 34.1%



6. EDCF Assistance by Country

- Concentrated on Asian countries including **Vietnam, the Philippines, Bangladesh, Indonesia, Sri Lanka** (46.3% to 5 countries)
- For the past five years, \$1.73 billion was offered to 27 projects aimed to improve transport infrastructure

(Unit: KRW100 mil)

Ranking	Country	Approval Amount	# of Cases	Ranking	Country	Approval Amount	# of Cases
1	Vietnam	21,021	48	11	Myanmar	2,429	8
2	Philippines	7,694	18	12	China	2,336	22
3	Bangladesh	6,487	17	13	Jordan	2,172	7
4	Indonesia	5,936	18	14	Pakistan	2,165	6
5	Sri Lanka	5,897	25	15	Ghana	1,940	5
6	Cambodia	4,663	14	16	Ethiopia	1,901	2
7	Tanzania	3,964	10	17	Laos	1,885	9
8	Mozambique	3,436	8	18	Nicaragua	1,656	7
9	Uzbekistan	2,541	7	19	Ecuador	1,354	3
10	Angola	2,479	7	20	Bosnia-Herzegovina	1,155	3

7. EDCF assistance in the Transport Sector

Sector	Country	Year of approval	Project name	Amount (\$1 million)
Airport	Philippines	2009~2010	Two projects including Puerto Princesa Airport Improvement	85
Bridge	Vietnam	2009~2013	3 projects including the Vinh Thinh Bridge Construction	417
	Bolivia	2009	Vanegas Bridge Construction Project	41
ITS	Dominica	2011	Santo Domingo Intelligence Transport Information System Establishment	36
	Vietnam	2009	Ho Chi Minh -Trung Luong Exp'Way ITS Establishment	30
Road	Mozambique	2009~2013	2 projects including Nacala Road Improvement Project	95
	Vietnam	2009~2012	3 projects including Hanoi-Haiphong Exp'way Const. (10 sections)	370
	Sri Lanka	2009~2012	Two projects including Hatton-Nuwara Eliya Road Construction	51
	Ethiopia	2013	Modjo-Hawassa Expressway Construction Project	100
	Indonesia	2009	Padang Bypass Expansion Project	58
	Cambodia	2009~2011	Three projects including GMS Northwest Road Improvement	104
	Tanzania	2012	Malagara Bridge & Association Road Construction (supplement)	29
	Pakistan	2011	Malakand Tunnel Construction Project	78
	Philippines	2011~2012	Two projects including Samar Coastal Road Project	69
	Railway	Bangladesh	2011	Railway Signal System Modernization Project
	Philippines	2009	The 2 nd North-South Association Railway Project	96
Port	Senegal	2010	Maritime Infrastructure Establishment Project	49
Total			27 projects	1,730

8. Transport Project by MOLIT

- Ministry of Land, Infrastructure, and Transport started its own foreign aid projects since 2013
- Establishing Master-plans for Infra. Development: 10 countries
 - 4 Transport Projects for Nigeria, Mozambique, Nicaragua, Vietnam: 2.8 billion KRW
- 8 Capacity Building Programs for developing countries: 0.91 billion KRW

Year	Country	City	Transport Projects
2013	Nigeria	Lagos	Lagos Regional Transport Plan
2014	Mozambique	-	Road Network Development Plan
	Nicaragua	-	National Road Network Design
	Vietnam	Hue	Urban Transport Master-Plan
Total			4 projects (among total 10 projects)

9. Knowledge Sharing Program

- The program is focused on helping achieve economic development instead of providing unilateral assistance.



- Consists of a policy consulting program, modularization program and joint consulting

(Supervised by Ministry of Planning & Finance, implemented by KDI)



10. KDI Projects in Transport Sector through KSP

- KSP conducted a **total of 429 projects by 2012 (2004~2012)**
- **6** of those projects pertained to **transport** in **5 countries**.

Year	Country	Consulting Project
2010 (1)	UAE (1)	Transport Management System
2011 (4)	Vietnam (2)	Airport Modernization Strategy in Vietnam Port Modernization Strategy in Vietnam
	South Africa (1)	Infrastructure (Traffic & Transport)
	Ethiopia (1)	Improvement of Transport Facilities in Addis Ababa
2012 (1)	South Africa (1)	Industrialization of Plants and Equipment Sectors through Expansion of Railway Network and Renewal Programs
Total	Four Countries (6)	Transport Management/Airport/Port/Transport Infrastructure/Transport Facilities/Rail

Contents

- I Introduction ODA of Korea
- II ODA in Transportation Sector
- III International Cooperation & Knowledge Sharing of KOTI

1. A Champion Research Institute

- **A research institute** on transport & logistics
- **Nat'l think-tank** for developing **policy/technology** on transport & logistics
- **Government affiliated and financed**
 - Established in **1986** by **Ministry of Transport**
 - Officially joined the **Nat'l Research Council** for Economics, Humanities & Social Sciences in **1999**

Vision

To become a **world-class integrated transport & logistics institute** leading **creative idea and innovation** to achieve a **human-oriented transportation justice**.

Development Goals

Policy Leader

Global Leader

Innovation Leader

2. Cooperation with Other Organizations

MOUs

- **Overseas : 60** organizations such as **World Bank, IDB, ADB, ICAO, UN ESCAP, UN Habitat, etc.**
- **Domestic : 63** organizations

Secondments to Int'l Organizations

- **3 Organizations** (World Bank, ADB, OECD)



2. Cooperation with Other Organizations

• Annual Joint Seminars with MOU partners

KOTI-World Bank Joint Workshops

- 2011:** Transport System for Climate Change & Green Growth
- 2012:** Implementing Sustainable Transport Systems in Developing Countries
- 2013:** Building Sustainable Transportation & Logistics System for Economic Development
- 2014:** Saving Lives Through Increasing Transport Safety



KOTI-OECD Joint Seminars

- 2010:** Green Growth in Transportation
- 2011:** Cycling Safety
- 2012:** Seamless Public Transport for all
- 2013:** Funding Transport for the Future
- 2014:** Urban Transport for a Changing World



KOTI-ICT China Joint Seminars

- 2012:** Sharing Comparative Experiences of Korea and China's High-Speed Rail Operations
- 2013:** Changes in Transport Mode Choices along with National Territorial Change

KOTI-ITPS Japan Joint Seminars

- 2011:** Issues in Urban Transport
- 2012:** Intercity Transport System in Asian Countries
- 2013:** Basic Transport Right
- 2014:** Logistics, LCC, Financing

3. International Joint Research

Project title	Pathways to Sustainable Transport for Developing Countries
Partner	World Bank (2011. 1~2012. 4)
Project title	Global Standardized Transport Database
Partner	World Bank (2011. 3~2012. 4)
Project title	Intelligent Transport Systems for Better Urban Transport: Recommendations for an Integrated Fare System
Partner	Korea EXIM Bank, ADB (2011. 12~2012. 2)
Project title	Reviving the Soul in Seoul: Seoul's Experienced in Demolishing Road Infrastructure and Improving Public Transport
Partner	GIZ (2011. 12~2012. 2)
Project title	Cloud Transport System
Partner	MIT Media Lab. (2011. 1~2011. 12)

4. Knowledge Sharing

Sharing Korea's Experiences

- Consulting Projects - Dispatching expert groups - Capacity building programs

Sharing Best Practices of Korea

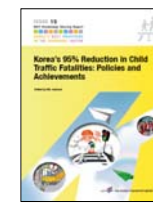
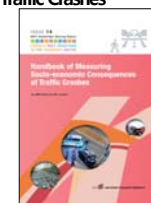
- **2 Economic growth & transport modes**
- **3 Transition in urban transport policy**
- **1 Bus system reform**
- **9 Best experiences from public transport reform**
- **8 Transport DB & investment strategies**
- **10 Road transport policy**
- **7 Railway development strategies**
- **6 Bicycle transport policy**
- **4 Transport safety policy**
- **5 Integrated fare & smart card ticket system**



4. Knowledge Sharing

Sharing Best Practices of Korea

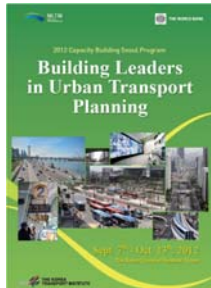
- **11 Korea's Railway PPP Projects**
- **12 Korea's HSR Construction & Technology Advances**
- **13 The Driving Force of Korea's Economic Growth**
- **14 Handbook of Measuring Socio-economic Consequences of Traffic Crashes**
- **15 95% Reduction in Child Traffic Fatalities Policies & Achievements**
- **16 Conflict Management & Governance in the Transport Sector**



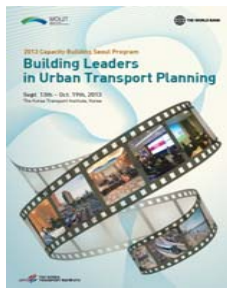
5. Capacity Building

Capacity Building with International Organizations

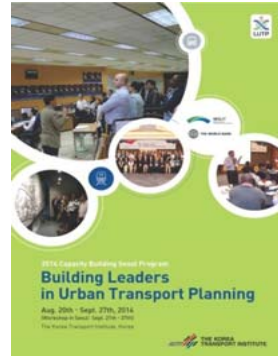
- Developing education and consulting projects with the World Bank, ADB, Citynet, etc.
- ex) KOTI-WB Leader's in Urban Transport Planning Seoul, etc.



Oct. 2012



Oct. 2013



Sep. 2014

THE KOREA TRANSPORT INSTITUTE

5. Capacity Building

Capacity Building with International Organizations (cont.)

- **CITYNET – Sustainable Urban Transport in Asia and the Pacific Region**
 - 2012 A best Practices Sharing Workshop(Goyang, Korea)
- **ADB – Knowledge Sharing Workshop to Korea**
 - 2013 Public Bike Sharing System Workshop (Changwon, Korea)
 - 2013 KOTI-ADB Railway Training Program
- **GGGI – Capacity Building Program**
 - 2013 Green Public Transport in Mongolia(Seoul)
- **MLIT – Capacity Building Programs**
 - 2013 CB Program for Indonesia Senior Transport Officials(Seoul),
 - 2014 KSP of Korea Infrastructure Development
- **UN ESCAP – Capacity Building Program**
 - 2013 Building Sustainable Transportation System

THE KOREA TRANSPORT INSTITUTE

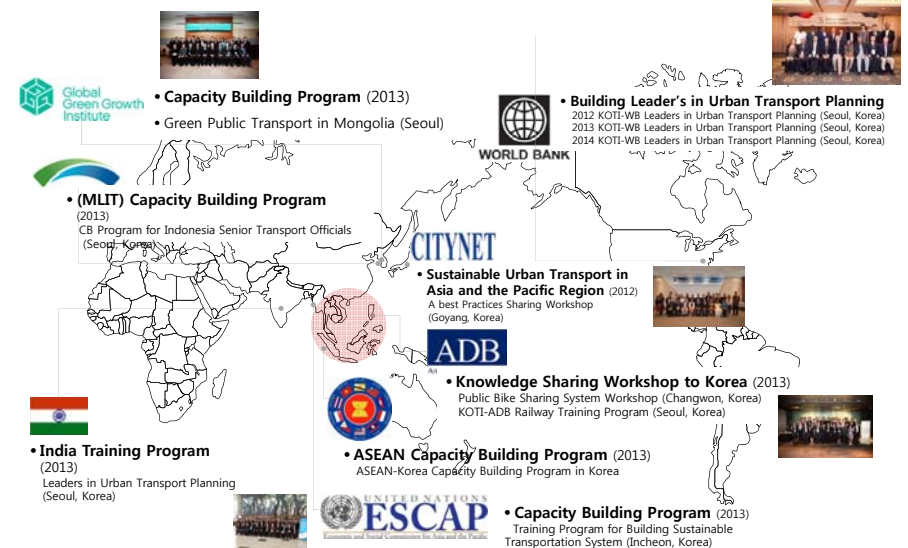
5. Capacity Building

Customized Capacity Building Program (CBP)

- **KOTI – Indonesia Dept. of Transport**
 - 2013 CBP for Transport Senior Officials (Goyang, Korea), **Internship**
 - 2014 **Internship** on High Speed Rail and Railway Crossing
- **Korea – ASEAN Capacity Building Program**
 - 2013 ASEAN-Korea CBP in Korea,
 - 2014 5th ASEAN-ROK Transport Cooperation Meeting
- **KOTI – India Training Program:** 2013 LUTP India Training Program(Seoul)
 - **One week program** on **Urban Transport**, 50 participants from India
- **KOTI – Sri Lanka:** 2014 CBP on ITS(Seoul)
- **KOTI – Nepal Capacity Building Program** on **Road Safety and Safety Audit**(Seoul)
 - Jun. 09 – Jun. 13 2014, 16 participants from Department of Road, Nepal
- **Capacity Building Program** on **Transport Database** for Nigerian Officials
 - Jul. 21 – Jul. 25 2014, 4 participants from NITT & FMOT, Nigeria
- **More Programs** in 2014
 - Afghanistan(**Road**, Aug.), Philippines(**Airport**, Aug.),
 - Mongolia(**Infrastructure**, Aug.), Bangladesh (**Public Transport**, Oct.),
 - S. American countries(**Transp. Planning**, Oct.), ASEAN(**Inland Logistics**, Oct.), etc.

THE KOREA TRANSPORT INSTITUTE

5. Capacity Building



THE KOREA TRANSPORT INSTITUTE

6. Oversea consulting Projects

◆ Building Master Plans

- **Roads:** Indonesia (Sumatra, 2007), Ethiopia(2013)
- **Railroads:** Mongolia(2013), Cameroon(2010)
- **Airports:** Russia (Khabarovsk Int'l Airport, 2010), Philippines (Mactan-Cebu Int'l Airport, 2010)
- **Urban development:** Nigeria (Lagos, 2013)
- **ITS:** Mongolia (Ulaanbaatar,2012), Mozambique (Maputo, 2012), Kazakhstan(2012), Sri Lannca(2013)


◆ Feasibility Study

- **Railroads:** Cameroon (Mbalam-Kribi,2011), Vietnam (Binh Hoa – Vung Tau, 2010)
- **Public transport:** Nepal (Kathmandu, 2012)
- **Airports:** Vietnam (Van Don Int'l Airport, 2011), Philippines (Clark Int'l Airport, 2007)
- **ITS:** Vietnam (Noi bai – Lao cai Highway, 2011)
- **Bridges:** Azerbaijan (Oversea bridge in Baku Bay, 2009)

◆ National Transport Networks Design, etc.

- **Mid-term infrastructure development:** Libya(2010)
- **Investing business formation:** Philippines(2010)
- **Road transport authority PMC:** Bangladesh(2013)



 THE KOREA TRANSPORT INSTITUTE

7. KOTI's Collaboration

◆ Capacity Building for public officials

- Organizing LUTP 2015
- Providing Customized Programs for Specific issues: urban · rail · road · air transport, logistics, sustainable transport, transport safety, ITS, etc.

◆ Knowledge Sharing

- Participating & organizing Seminars, exchange of information & personnel

◆ Consulting Projects for developing transport infrastructure and policy (funding from KOICA, MDBs, or National fund)

- Building Master Plans
- Feasibility Studies
- National Transport Networks Design
- Transport & logistics corridor development

 THE KOREA TRANSPORT INSTITUTE

8. Policy Direction

◆ Persistent expansion of ODA volume

◆ Integrated ODA implementation and consolidation of cooperative system

◆ Effective implementation focusing recipient countries' needs

- Win-Win ODA: tailored ODA
- Effective ODA based on collaboration: between implementing agencies
- Result-oriented ODA: ex-ante verification & ex-post management

◆ ODA+PPP

◆ Developing agenda & project in concert with MDBs and international societies including EASTS

KOTI enriches the future by securing harmony among humans, the environment and transport.



 THE KOREA TRANSPORT INSTITUTE

 THE KOREA TRANSPORT INSTITUTE