

Agenda of EASTS 2023 - MBSA Convention Centre, Shah Alam, Selangor

Day and Time	Venue	A	B	C	D	E	F	G	H	I	K
	Place	Banquet Hall or Seminar Room8 (S8)	Seminar Room1 (S1)	Seminar Room2 (S2)	Seminar Room3 (S3)	Seminar Room4 (S4)	Seminar Room5 (S5)	Seminar Room6 (S6)	Seminar Room7 (S7)	Seminar Room9 (S9)	Poster Area
EASTS 2023											
Sep.3(Sun)											
13:00-16:00	Early Registration										RAM & BM 1 Representative Assembly Meeting 13:00-16:00
EASTS 2023, Day 1											
Sep.4 (Mon)											
07:30-08:45	Participants Registration and Arrival of Guest										
08:45-09:00	Arrival of the Guest of Honour										
09:00-10:15	Opening Ceremony										
10:15-11:00	Coffee/Tea Break - Networking										
11:00-12:00	Keynote Speech by Professor Dato' Dr. Ahmad Farhan Mohd Sadullah										
12:00-13:00	Plenary Session (1)	Forum									
13:00-14:00	Lunch										
14:00-15:30	Technical Session - 1	1 IRG IRG-39	2 A 10.1	3 A 10.4	4 B 20.1	5 C 30.1	6 C 30.2	7 E 50.1	8 G 70.5	9 J 100.1	201
15:30-15:45	Coffee/Tea Break - Networking/ Pocket Talk										
15:45-17:15	Technical Session - 2	11 IRG IRG-41	12 A 10.1	13 A 10.4	14 B 20.7	15 C 30.1	16 C 30.2	17 E 50.1	18 G 70.5	19 J 100.1	POSTER-A 14:00-16:30
19:30-20:30	Gala Dinner										
EASTS 2023, Day 2											
Sep.5 (Tue)											
9:00-10:00	Technical Session - 3	21 IRG IRG-38	22 A 10.1	23 A 10.4	24 B 40.2	25 C 30.1	26 I 90.1 90.5	27 E 50.1	28 G 70.5	29 J 100.1	202
10:00-10:15	Coffee/Tea Break - Networking/ Pocket Talk										
10:15-11:30	Plenary Session (2)	Forum									
11:30-13:00	Technical Session - 4	31 WCTR SP	32 B 20.6	33 Reserved	34 H 80.1	35 C 30.1	36 I 90.1 90.3	37 E 50.4	38 G 70.4	39 J 100.2 100.3	POSTER-B 9:30-12:00
13:00-14:00	Lunch										
14:00-15:30	Technical Session - 5	41 IRG IRG-46	42 A 10.1 10.2	43 D 40.1	44 F 60.1	45 C 30.1	46 I 90.2	47 E 50.3	48 G 70.1 70.2	49 J 100.2	203
15:30-15:45	Coffee/Tea Break - Networking/ Pocket Talk										
15:45-17:15	Technical Session - 6	51 IRG IRG-46	52 A 10.1	53 D 40.3 40.4	54 F 60.1 60.4	55 C 30.1	56 I 90.6	57 E 50.5	58 G 70.2	59 J 100.2	POSTER-C 14:00-16:30
17:15-18:45	Technical Session - 7	61 A 10.7	62 A 10.5	63 D 40.3	64 F 60.2 60.3	65 C 30.1	66 I 90.6	67 G 70.3 70.8	68 G 70.2 70.6	69 J 100.2	
EASTS 2023, Day 3											
Sep.6 (Wed)											
9:00-10:00	Technical Session - 8	71 A 10.5	72 A 10.6	73 A 10.3 10.4	74 D 20.7	75 I 90.1 90.5	76 I 90.8	77 K 110.1	78 G 70.3	79 J 100.1	204
10:00-10:15	Coffee/Tea Break - Networking/ Pocket Talk										
10:15-11:30	Plenary Session (3)	Forum									
11:30-13:00	Technical Session - 9	81 A 10.5	82 B 20.7	83 C 30.3	84 B 20.5	85 C 30.1	86 H 80.2	87 E 50.2	88 G 70.3	89 J 100.1	POSTER-D 9:30-12:00
13:00-14:00	Lunch										
14:00-15:30	Technical Session - 10	91 A 10.5	92 B 20.3 20.4	93 C 30.2 30.3	94 B 20.5	95 C 30.1 30.2	96 H 80.2	97 E 50.2	98 G 70.3	99 J 100.1	205
15:30-15:45	Coffee/Tea Break - Networking/ Pocket Talk										
15:45-17:15	Technical Session - 11	10 K 110.2 110.4 130.1	20 L 120.2	30 L 120.1 120.2	40 P 130.2 200.35	50 L 120.1	60 J 100.4	70 J 100.1	80 L 120.3 120.4 130.2	90+100 K 110.3 20.8	POSTER-E 14:00-16:30
19:30-20:00	Farewell Dinner										
EASTS 2023, Day 4											
Sep.7 (Wed)											
08:00-09:00	Gather at MBSA Convention Centre										
09:00-12:30	Visit										
12:30 - 1:00	End of visit										

Opening Ceremony		
Day	Time	
Sep. 4 (Mon)	09:00-10:15	T.B.D
Keynote speeches		
Keynote Speech by Professor Dato' Dr. Ahmad Farhan Mohd Sadullah		
Day	Time	
Sep. 4 (Mon)	11:00-12:00	T.B.D
Plenary session (1)		
Keynote speeches		
Day	Time	
Sep. 4 (Mon)	12:00-13:00	T.B.D
Plenary session (2)		
Keynote speeches		
Day	Time	
Sep. 5 (Tue)	10:15-11:30	T.B.D
Plenary session (3)		
Keynote speeches		
Day	Time	
Sep. 6 (Wed)	10:15-11:30	T.B.D
Closing Ceremony/Farewell Dinner		
Day	Time	
Sep.6 (Wed)	19:30-20:00	T.B.D

Room A - Banquet Hall or Seminar Room8 (S8)									
(IRG-39-2019) Challenges of Mobile Ride-Hailing Applications in Asian Countries: Their Impacts on Local Transportation Market									
Session Chair: T.B.D									
Technical Session - 1	Session Number	Day	Time	Paper ID	Article Title	Presenter	Corresponding Author	Corresponding Author's Institution	Authors
1		Sep. 4 (Mon)	14:00 15:30	PP3760	Regulations for Ride-Hailing Services and Its Operation under the Competition with Informal Motorcycle Taxi Services: Case Study in Bangkok, Thailand	Yuma SAITO	Yuma SAITO	The University of Tokyo Graduate School of Engineering Faculty of Engineering	Yuma SAITO; Hironori KATO; Saksith CHALERMPONG; Phathinan THAITHATKUL
				PP3698	Impacts of Ride-Hailing Applications on Sustainable Mobility in Asian Cities: Bangkok, Hanoi, Manila	Saksith CHALERMPONG	Phathinan THAITHATKUL	Chulalongkorn University	Saksith CHALERMPONG; Phathinan THAITHATKUL; Nguyen HOANG-TUNG; Alexis FILLONE; Hironori
				PP3573	Use of Ride Hailing Services in Bangkok, Hanoi, and Metro Manila: A Comparison of Gender Preferences	Alexis FILLONE	Anabel ABUZO	De La Salle University, Mainla	Alexis FILLONE; Saksith CHALERMPONG; Phathinan THAITHATKUL; Nguyen HOANG-TUNG; Hironori KATO
				PP3754	Associations of Spatiotemporal Patterns in Ride-Hailing Cars Usage with Traffic Congestion, Urban Characteristics, and COVID-19 Pandemic in Hanoi	Hoang-Tung NGUYEN	Hoang-Tung NGUYEN	University of Transport And Communications	Hoang-Tung NGUYEN; Hoang Thuy LINH; Nguyen Viet TAN; Hironori KATO
(IRG-41-2020) International Research Group on good practices design guidelines for Traffic calming devices adopted in Eastern Asian countries									
Session Chair: T.B.D									
Technical Session - 2	Session Number	Day	Time	Paper ID	Article Title	Presenter	Corresponding Author	Corresponding Author's Institution	Authors
11		Sep. 4 (Mon)	15:45 17:15	PP3699	Multiple Traffic Calming Measures on Urban Residential Road Network in Asaka City, Japan – Driving Speed and Residents' Perception	Sajith Udayanga Pathiraja	Sajith Udayanga Pathiraja	Wayamba University of Sri Lanka	Sajith Udayanga Pathiraja ARACHCHILLAGE; Atsushi SASAKI; Aya KOJIMA; Hisashi
				PP3579	Assessment of Effectiveness of Different Speed Hump Shapes on the Car Vibration Using Computer Simulation	Mahdi NABIZADA	Mahdi NABIZADA	Saitama University Graduate School of Science and Engineering	Mahdi NABIZADA; Aya KOJIMA; Hisashi KUBOTA
				PP3708	Variation of Speed Bump Profiles and Their Effect on Reduction of Speed in Local Roads of Sri Lanka	Gn Nirosha SAMARASEKARA	Gn Nirosha SAMARASEKARA	University of Sri Jayewardenepura	Rukshathan SIVAPATHAM; Sanduni AMBULDENIYA; Sajith UDAYANGA; Suneth
				PP3692	Effectiveness of Traffic Calming Measures (TCM) Implemented in Urban Roads of Colombo, Sri Lanka	Ganga Nirosha SAMARASEKARA	Ganga Nirosha SAMARASEKARA	University of Sri Jayewardenepura	Mahendran KULAXIA; Ganga Nirosha SAMARASEKARA; Sanduni AMBULDENIYA
(IRG-38-2019) Vulnerability Assessment of Transport Systems due to Flooding in Selected Asian Cities									
Session Chair: T.B.D									
Technical Session - 3	Session Number	Day	Time	Paper ID	Article Title	Presenter	Corresponding Author	Corresponding Author's Institution	Authors
21		Sep. 5 (Tue)	09:00 10:00	PP3720	Evaluation of Vulnerable Routes and Simulation Under Normal and Flood Conditions in Cagayan De Oro City, Philippines	Anabel ABUZO	Anabel ABUZO	De La Salle University, Mainla	Anabel ABUZO; Alexis FILLONE; Jefferson VALLENTE; Avalyn CAHULOGAN; John OSIA;
				PP3378	Urban Road Network Vulnerability Modelling: the Case of Flash Flooding in Kuala Lumpur, Malaysia	Susilawati SUSILAWATI	Susilawati SUSILAWATI	Monash University Malaysia	Susilawati SUSILAWATI; Michael TAYLOR; Sekhar SOMENAHALLI; Justin YATO
				PP3660	Multimodal Transport Infrastructure and Operations Design for a Liveable City: Case Study of Singapore	Ghim Ping ONG	Ghim Ping ONG	National University of Singapore	Ghim Ping ONG
WCTR SP									
Session Chair: Guenter EMBERGER and Takeru SHIBAYAMA									
Technical Session - 4	Session Number	Day	Time	Paper ID	Article Title	Presenter	Corresponding Author	Corresponding Author's Institution	Authors
31		Sep. 5 (Tue)	11:30 13:00	-	Greetings and WCTR SIG G2 Activities on the Development of National Transport Planning	Gunter EMBERGER and Takeru SHIBAYAMA	Gunter EMBERGER and Takeru SHIBAYAMA	Institute of Transportation, TU Wien, Austria	Gunter EMBERGER and Takeru SHIBAYAMA
				-	Integrated Transport Policy in India—an Elusive Goal	Ravibabu MANCHALA	Ravibabu MANCHALA	Regional Director, CILT, Indian Railways	Ravibabu MANCHALA
				-	National Transport Policy in Malaysia - from the Time of Independence until Today (TBC)	Masria MUSTAFA	Masria MUSTAFA	UiTM, Malaysia	Masria MUSTAFA
				-	Development of National Transport Planning in Thailand	Sitha JAENSIRISAK	Sitha JAENSIRISAK	Ubon Ratchathani University, Thailand	Sitha JAENSIRISAK
				-	The National Transportation Planning in the Philippines and the Consideration of Passengers with Limited Mobility in the Planning Process	Sheilah GAABUCAYAN-NAPALANG	Sheilah GAABUCAYAN-NAPALANG	School of Urban and Regional Planning, University of the Philippines	Sheilah GAABUCAYAN-NAPALANG
				-	History of Transport Policies and their Planning Processes in Seoul and South Korea	Daun YUN	Daun YUN	Institute of Transportation, TU Wien, Austria	Daun YUN
(IRG-46) Walkability transitions towards healthier and more active transport environments									
Session Chair: T.B.D									
Technical Session - 5	Session Number	Day	Time	Paper ID	Article Title	Presenter	Corresponding Author	Corresponding Author's Institution	Authors
41		Sep. 5 (Tue)	14:00 15:30	PP3507	Gender-Based Walkability Assessment of Urban Sidewalks and Footpaths in Ermita, Manila: A Case Study	Philip LEGASPI	Philip LEGASPI	University of the Philippines Diliman	Philip LEGASPI; Sandy Mae GASPAY
				PP3383	Jane Jacobs' "Exuberant Vitality" and Downtown Baguio	Philip PECKSON	Philip PECKSON	University of Asia and the Pacific	Philip PECKSON; Varsolo SUNIO; Iderlina MATEO-BABIANO
				PP3702	The Study of Retail Space Management in Metro's Interchange Station: A Case Study of Airport Rail Link Bangkok	Chittarpon PROMDOUNG	Somsiri SIEWWUTTANAGUL	Mahidol University Faculty of Engineering	Chittarpon PROMDOUNG; Somsiri SIEWWUTTANAGUL
				PP3319	Impact of COVID-19 Pandemic on Active Mobility Behavior and Preference of University Students	Pawinee IAMTRAKUL	Pawinee IAMTRAKUL	Thammasat University	Pawinee IAMTRAKUL; I-Soon RUENGRATANAUAMPORN; Sararad CHAYPHONG; Derlie MATEO-BABIANO
(IRG-46) Walkability transitions towards healthier and more active transport environments									

Session - 6				Session Chair: T.B.D				
Session Number	Day	Time	Paper ID	Article Title	Presenter	Corresponding Author	Corresponding Author's Institution	Authors
51	Sep. 5 (Tue)	15:45 17:15	PP3673	Using Activity-Based Model to Test Effects of Last-Mile Improvements on Residence Daily Activity and Travel Plan	Akarapong KEERATIKORNANTAYOD	Akarapong KEERATIKORNANTAYOD	Mahidol University Faculty of Engineering	KEERATIKORNANTAYOD; Treeratop SIRPIROTE; Somsiri SIEWWUTTANAGUL; Natachai SIEWWUTTANAGUL
			PP3312	Evaluating the Impact of an Additional Ramp to Spatial Accessibility in An Airport-Rail Station Connecting Area: A Case Study of Don Mueang Station, Bangkok, Thailand	Somsiri SIEWWUTTANAGUL	Somsiri SIEWWUTTANAGUL	Mahidol University Faculty of Engineering	Pakapon UEASATCHAMONGKHON; Somsiri SIEWWUTTANAGUL
			PP3686	Public Transport Policy Through Gender Lens in the Post-Pandemic World	Tu Anh TRINH	Tu Anh TRINH	University of Economics Ho Chi Minh City	Tu Anh TRINH; Hoai Nguyen PHAM
Technical Session - 7				10.70: Others				
				Session Chair: T.B.D				
Session Number	Day	Time	Paper ID	Article Title	Presenter	Corresponding Author	Corresponding Author's Institution	Authors
61	Sep. 5 (Tue)	17:15 18:45	PP3290	Analyzing Tourist Departure Time Decision-Making Behaviors Using Cusp Catastrophe Model	Yu-Kai HUANG	Yu-Kai HUANG	Department of Culture & Creative Enterprise Management	Yu-Kai HUANG; Chi-Han HUANG; Cheng-Chi CHUNG
			PP3469	Exploring College Students' Online Platform Learning in the Transportation Planning Course	Po-Hsing TSENG	Po-Hsing TSENG	National Taiwan Ocean University	Po-Hsing TSENG; Wei-Hsun WANG; Nick PILCHER
			PP3539	Prioritizing Target Motorcycle Owners to Promote Electric Vehicles among Motorcycle Taxi Drivers in Bangkok	Omicha ANUCHITCHANCHAI	Saksith CHALERMPONG	Chulalongkorn University	Omicha ANUCHITCHANCHAI; Saksith CHALERMPONG
			PP2531	A Combined UTAUT2 Model for Investigating the Intention to Use Electric Scooter Sharing	Yu-Shyun CHIEN	Chung-Cheng Jason LU	National Yang Ming Chiao Tung University	Yu-Shyun CHIEN; Chung-Cheng Jason LU
			PP3799	Securing Mobility Instead of Private Cars for Elderly and Other Vulnerable People: A Japanese Case Study	Fumihisa HARUNA	Fumihisa HARUNA	Japan Transport and Tourism Research Institute	Fumihisa HARUNA; Shinji SHIMAMOTO; Satomi INAMOTO; Ziyi QIN; Koichi FUJISAKI; Minoru
Technical Session - 8				10.50: Transportation and Natural Disasters				
				Session Chair: T.B.D				
Session Number	Day	Time	Paper ID	Article Title	Presenter	Corresponding Author	Corresponding Author's Institution	Authors
71	Sep.6 (Wed)	09:00 10:00	PP3823	The Impact of Perception of Safety Criteria and Safety Behaviour among Ferry Employees	Muhammad Azizol Bin AZMI	Muhammad Azizol AZMI	Malaysia Maritime Enforcement Agency	Muhammad Azizol AZMI; Kasyri MOKHTAR; Noor Apandi OSMIN; Suzanna Razali CHAN; Lai Fatt Natsuki NAGASAKA; Akimasa FUJIWARA; Makoto CHIKARAISHI; Kiriko SAKATA
			PP3463	Factor Analysis and Policy Simulation on Evacuation Decision-Making during Heavy Rainfall Disaster	Natsuki NAGASAKA	Natsuki NAGASAKA	Oriental Consultants Global Co., Ltd.	Natsuki NAGASAKA; Kiriko SAKATA
			PP3334	Spatial Classification of the Impact of COVID-19 on Bus Ridership Using Smart Card Data	Yuki NAKAJIMA	Hiroshi SHIMAMOTO	Miyazaki Daigaku	Yuki NAKAJIMA; Hiroshi SHIMAMOTO
			PP3466	How Topology Changes under Disruptive Conditions Affect Transportation System Resilience A Case Study of Colombo	Lindamullage Don Charls Hasintha Nawod KALPANA	Lindamullage Don Charls Hasintha Nawod KALPANA	Nagaoka University of Technology Department of Civil and Environmental Engineering	Lindamullage Don Charls Hasintha Nawod KALPANA; Tepei KATO; Kazushi SANO
Technical Session - 9				10.50: Transportation and Natural Disasters				
				Session Chair: T.B.D				
Session Number	Day	Time	Paper ID	Article Title	Presenter	Corresponding Author	Corresponding Author's Institution	Authors
81	Sep.6 (Wed)	11:30 13:00	PP3580	Emergency Shelter Location-Allocation Analysis with Time-Varying Demand	Makoto CHIKARAISHI	Makoto CHIKARAISHI	Hiroshima University	Eiei TUN; Toshimitsu NISHIKIORI; Yaron VARGHESE; Makoto CHIKARAISHI; Miho SEIKE; Akimasa FUJIWARA; Amalina Binti AMLAN; Siti Asmah HASSAN; Nor Eliza ALIAS Feifan XU; Haruki TAJIMA; Hirokazu KATO; Marjan KHALEGHI
			PP3710	Vulnerability Exposure Indicators of Transportation Systems in the Face of Climate Change	Hamizah Amalina Binti AMLAN	Hamizah Amalina Binti AMLAN	Universiti Teknologi Malaysia - Main Campus Skudai	Hamizah Amalina Binti AMLAN; Siti Asmah HASSAN; Nor Eliza ALIAS
			PP3802	Prediction of Changes in Flood Risk for Railway Networks Due to Climate Change	Feifan XU	Feifan XU	Nagoya University Graduate School of Environmental Studies	Feifan XU; Haruki TAJIMA; Hirokazu KATO; Marjan KHALEGHI
			PP3621	Estimation of Macroscopic Traffic Flow Model and Traffic Capacity Considering Road Surface Conditions During Snowfall	Tepei KATO	Tepei KATO	Nagaoka University	Tepei KATO; Ryuchi TANI; Kenetsu UCHIDA; Kazunori MUNEHIRO
			PP3525	Advanced Methodology for Obtaining Early Warning Information and Safety Confirmation Information in Disaster Smartphones Using Drones with Quasi-Zenith Satellite System (QZSS) Receivers and	Hongo NOBUO	Nobuo HONGO	Ibaraki University	Hongo NOBUO; Terumitsu HIRATA
Technical Session - 10				10.50: Transportation and Natural Disasters				
				Session Chair: T.B.D				
Session Number	Day	Time	Paper ID	Article Title	Presenter	Corresponding Author	Corresponding Author's Institution	Authors
91	Sep.6 (Wed)	14:00 15:30	PP3368	Large-Scale Disaster Evacuation Choice Behavior Modelling Under Compound Risk of Natural Disasters Amid COVID-19 Pandemic in An Automatic Flood Damage Road Detection Method Based on Deep Learning and Elevation Data	Taisei NODA	Taisei NODA	Toyoashi University	Taisei NODA; Nao SUGIKI; Mustafa MUTAHARI; Kojiro MATSUI
			PP3294	Impacts of COVID-19 on Mobility of Elderly and Physically Challenged People in Low Income Countries (LICs)	M. Shafiq-Ur RAHMAN	M. Shafiq-Ur RAHMAN	Jahangirnagar University	M. Shafiq-Ur RAHMAN; P. TIMMS; A. AHMED; A.H. NAMANGAYA; G. SIAME; A.KABIR
			PP3388	2020 Taal Volcano Eruption Evacuation Destination Behavior of Households in Batangas, Philippines	Ma Bernadeth LIM	Ma Bernadeth Borleo LIM	University of The Philippines Los Banos	Ma Bernadeth Borleo LIM; Hector Jr LIM; Joy Mae ANABO
			PP3352	Network Effect of the Mobile Bridge Restoring Disrupted Road Links Caused by Natural Disaster	Phal OUDAM	Akimasa FUJIWARA	Hiroshima University	Tatsuya YAMASHITA; Oudam ARIO; Akimasa FUJIWARA; Ichiro PHAL; Makoto CHIKARAISHI; Toshinari
			Technical Session - 11				100.20: Driving Behavior and Safety 110.40: Operation and Management of Air/Water Transportation 130.10: Engineering, Technology, and Design	
				Session Chair: T.B.D				
Session Number	Day	Time	Paper ID	Article Title	Presenter	Corresponding Author	Corresponding Author's Institution	Authors
10	Sep.6 (Wed)	15:45 17:15	PP3541	Port Capacity Measurement and Demand-Based Timetable Development for Cebu Ports: A Case Study	John Justine VILLAR	Arse John SALISON	Up National Center for Transportation Studies	Arse John SALISON; Virgilio Ma. Jr. RAMOS; John Justine VILLAR
			PP3571	Study for Shared Bike Riding Duration: Application of Survival Model to Taiwan's Youbike	Barbara T.H. YEN	Barbara T.H. YEN	National Yang Ming Chiao Tung University	Chiang FU; Barbara T.H. YEN; Chia-Jung YEH
			PP3423	Research on Prevention and Improvement of Operation Disruption: Taking Rail Vehicles as An Example	Fuh-Shyong YANG	Fuh-Shyong YANG	National Cheng Kung University College of Management	Yung-Hsiang CHENG; Fuh-Shyong YANG
			PP3685	Study on the Port Selection for Offshore Wind Farms- Perspectives of Ports in Taiwan	Chao Hung CHIANG	Chao-Hung CHIANG	National Penghu University of Science And Technology	Chao-Hung CHIANG
			PP3325	Feasibility Analysis of International Sea-Air Transport on the Export Cargo from East Asia to North America	Hiroyuki ISHIHARA	Kazuhiko ISHIGURO	Kobe University	Hiroyuki ISHIHARA; Kazuhiko ISHIGURO; Mikio TAKEBAYASHI
Room B-Seminar Room1 (S1)				10.10 Asia-Specific Issues				
Technical Session - 1				Session Chair: T.B.D				
Session Number	Day	Time	Paper ID	Article Title	Presenter	Corresponding Author	Corresponding Author's Institution	Authors
2	Sep. 4 (Mon)	14:00 15:30	PP3260	Impact of COVID-19 on Paratransit Services Operating with Ride-Hailing Apps: the Phnom Penh Case	Panha YANG	Panha YANG	Institute of Technology of Cambodia	Panha YANG
			PP3578	Operational Characteristics of Commuting Modes for Factory Workers in Phnom Penh	Panha YANG	Panha YANG	Institute of Technology of Cambodia	Panha YANG; Veng Kheang PHUN; Fetso YAI
			PP3627	Transportation Status and Opening of Schools During the Pandemic in the Philippines	Nonalu Sherida ABAO	Nonalu Sherida ABAO	University of the Philippines Diliman	Nonalu Sherida ABAO; Jose Regis REGIDOR; Ricardo SIGLIA
			PP3638	Communication-Based Train Safety Protection System in Response to the Derailment Accident in Taiwan	Jia-Ru LI	Jia-Ru LI	Lilee Systems	Jia-Ru LI; Hui-Sheng FENG; Dun-Hui YANG; Ching-Yao SHEN; Tzu-Chen LIAO; Bob. Ke-Chin WU
			PP3711	Identification of Safety Deficiencies and Prioritization of the Reasons for Non-Compliance of Safety Protocols at Road Work	Kaniska GHOSH	Kaniska GHOSH	Indian Institute of Technology Kharagpur	Harsh CHODNEKAR; Kaniska GHOSH; Swati MAITRA
Technical Session - 2				10.10 Asia-Specific Issues				
				Session Chair: T.B.D				
Session Number	Day	Time	Paper ID	Article Title	Presenter	Corresponding Author	Corresponding Author's Institution	Authors
12	Sep. 4 (Mon)	15:45 17:15	PP3296	Adapting Travel Behavior to Climate Change in India: Analyzing the Perception Among University Students from Mumbai	Ahana SARKAR	Arnab JANA	Indian Institute of Technology Bombay	Neenu THOMAS; Ahana SARKAR; Arnab JANA
			PP3518	An Investigation of Disparities in Willingness to Pay Using Stated Preference Survey and Discrete Choice Models	Monita Yessy Beatrick WAMBRAUW	Monita Yessy Beatrick WAMBRAUW	Cenderawasih University	Monita Yessy Beatrick WAMBRAUW; Sekhar SOMENAHALLI; LI MENG; Derek SCRAFTON
			PP3261	Examining Passenger Car Ownership of Different Sizes Incorporating Unknown Annual Income and Household Structure: Case Study of Nagoya Metropolitan Area, Japan	Toshiyuki YAMAMOTO	Jia YANG	Toyota Transportation Research Institute	Jia YANG; Tomio MIWA; Takayuki MORIKAWA; Toshiyuki YAMAMOTO; Ryoukei ANDO
			PP3330	The Crosswalk Conundrum: An Investigation of Pedestrian Crossing Facility Usage	G R BIVINA	G R BIVINA	Maulana Azad National Institute of Technology	Tushar BANSAL; G R BIVINA; Siddhartha ROKADE
			PP3519	Analyzing the Quality of Sidewalks Using Structural Equation Modeling	Ayushi SHAH	Ayushi Vinesh Kumar SHAH	Sardar Vallabhbhai National Institute of Technology	Ayushi Vinesh Kumar SHAH; Gaurang JOSHI
Technical Session - 3				10.10 Asia-Specific Issues				
				Session Chair: T.B.D				
Session Number	Day	Time	Paper ID	Article Title	Presenter	Corresponding Author	Corresponding Author's Institution	Authors
			PP3620	Identification of Polluting Vehicles in An Urban Vehicle Fleet: An Experience in Kolkata Metropolitan Area	Kaustubh SAYSARDAR	Bhargab MAITRA	Indian Institute of Technology Kharagpur, India	Kaustubh SAYSARDAR; Bhargab MAITRA

22	Sep. 5 (Tue)	09:00 10:00	PP3617	Investigating the Relationship Between Population and CO2 Emissions from Transportation Systems: An Evidence from Asian	Chetna RATHEE	Chetna RATHEE	Indian Institute of Technology Roorkee	Chetna RATHEE; Shubhajit SADHUKHAN
			PP3773	Impact of Odd-Even Policy Implemented in Delhi on Pollution	Ranjana SONI	Ranjana SONI	Indian Institute of Technology Delhi	Ranjana SONI; Geetam TIWARI; Manoj MALAYATH
			PP3584	Investigating Speed Characteristics of Vehicles for Creating Safe Speed Environment: A Case on Indian Highways	Swati MAITRA	Swati MAITRA	Indian Institute of Technology Kharagpur	Sanjay KUMAR; Swati MAITRA
			20.20: Financing					
Technical Session - 4								
Session Chair: T.B.D								
Session Number	Day	Time	Paper ID	Article Title	Presenter	Corresponding Author	Corresponding Author's Institution	Authors
32	Sep. 5 (Tue)	11:30 13:00	PP3477	Economic Analysis of Highway Improvements and Integration of Highway Development Plans Moe Thet Thet Ayea, Kyaingb	Moe Thet Thet AYE	Moe Thet Thet AYE	Yangon Technological University	Moe Thet Thet AYE; Kyaing KYAING
			PP3305	Analysis of the Crucial Factors and Reforms for the Financial Shortfall of Sri Lanka Railways (SLR)	Chamila Tharangani DANTHANARAYANA	Chamila Tharangani DANTHANARAYANA	University of Colombo Faculty of Arts	Chamila Tharangani DANTHANARAYANA; Amal KUMARAGE
			PP3753	Understanding Travellers Shift Behaviour for New Mass Transit System: A Case Study of Nagpur	Richa PATEL	Richa PATEL	Sardar Vallabhbhai National Institute of Technology	Richa PATEL; Rohit RATHOD; Gaurang JOSHI
			PP3647	Moving Towards Mobility as a Strategy: Integration of Smart Mobility Data for Evidence-Based Policy Making in Indonesian	Taiyo ISHIKAWA	Taiyo ISHIKAWA	Nippon Koei Co., Ltd	Taiyo ISHIKAWA; Kenichi KOUCHI; Kunihito UZAWA
			PP3461	Preferences of Mass Transit Users and Non-Users, and Impact of Habit and Convenience Measures on Mode Choice Behaviour – A Case Study of Delhi, India	Manasi MAHAJAN	Manasi Uday MAHAJAN	Sardar Vallabhbhai National Institute of Technology	Manasi Uday MAHAJAN; Rohit RATHOD; Gaurang JOSHI; Shrinivas ARKATKAR
Technical Session - 5								
10.10 Asia-Specific Issues								
Session Chair: T.B.D								
Session Number	Day	Time	Paper ID	Article Title	Presenter	Corresponding Author	Corresponding Author's Institution	Authors
42	Sep. 5 (Tue)	14:00 15:30	PP3484	Simulation Based Estimation of Optimal Number of AGV for Coal Export Process	Naranbaatar ERDENESUREN	Naranbaatar ERDENESUREN	Mongolian University of Science and Technology	Naranbaatar ERDENESUREN; Arimbayar SAMDANTSOODOL
			PP2697	Spatiotemporal Constraints Experienced by Female Ride-Hailing Drivers	Isti HIDAYATI	Isti HIDAYATI	Gadjah Mada University Faculty of Engineering: Universitas Gadjah Mada Fakultas Teknik	Isti HIDAYATI
			PP3712	Prioritization of Interventions for Intersections along a Highway Corridor – A Case Study	Bhargab MAITRA	Bhargab MAITRA	Indian Institute of Technology Kharagpur, India	Sudipta PAL; Bhargab MAITRA
			PP3691	Changes in Trip and Modal Choice Importance before and during COVID-19 in Metro Manila, Philippines	Dianne ANCHETA	Dianne Pacis ANCHETA	Hokkaido University: Hokkaido Daigaku	Dianne Pacis ANCHETA; Ryuichi TANI; Ken-Etsu UCHIDA
			PP3273	Managing Community Participation in Rural Transport Infrastructure Development in Southeastern Provinces, Vietnam	Trinh Thi PHIN	Dinh Tuan HAI	Hanoi Architectural University	Dinh Tuan HAI; Nguyen Xuan QUYET; Trinh Thi PHIN
			Technical Session - 6					
10.10 Asia-Specific Issues								
Session Chair: T.B.D								
Session Number	Day	Time	Paper ID	Article Title	Presenter	Corresponding Author	Corresponding Author's Institution	Authors
52	Sep. 5 (Tue)	15:45 17:15	PP3401	Mobility and Safety: Women Passengers' Perception of Safety in Using Motorcycle Taxis in Metro Manila	Ma. Sheilah Gaubucayan NAPALANG	Ma. Sheilah Gaubucayan NAPALANG	University of the Philippines Diliman	Ma. Sheilah Gaubucayan NAPALANG; Carmeli CHAVES; Karen Jago-ON; Dina MAGNAYE; Cresceno MONTALBO; Anna MARCALL
			PP3593	Application of Crime-Related Modified Diagram in the Asphalt Concrete Mix	Shila NEUPANE	Shila NEUPANE	Government of Nepal	Shila NEUPANE
			PP2656	Data-Driven Approach for Analysing the Impact of Crossing Pedestrian on Traffic Characteristics at Urban Midblocks.	Athira J	Yogeshwar V. NAVANDAR	National Institute of Technology Calicut	JATHIRA; SREECHITRA; Yogeshwar V. NAVANDAR; Hareshkumar GOLAKIYA; Ashish DHAMANIYA;
			PP3458	Road Characteristics Associated with Motorcycle Crashes Involving Heavy Goods Vehicle	Nor Izzah ZAINUDDIN	Nor Izzah ZAINUDDIN	Universiti Teknologi Mara	Nor Izzah ZAINUDDIN; Ahmad Kamil ARSHAD; Wardati HASHIM; Rizati HAMIDUN; Syahmi Razi
			PP3267	Modelling the Speeding Behaviour of Motorized Two-Wheeler Riders Using Structural Equation Approach	Darshana O	Darshana OTHAYOTH	National Institute of Technology Tiruchirappalli	Darshana OTHAYOTH; Matavalan UTTEJ
Technical Session - 7								
10.50: Transportation and Natural Disasters								
Session Chair: T.B.D								
Session Number	Day	Time	Paper ID	Article Title	Presenter	Corresponding Author	Corresponding Author's Institution	Authors
62	Sep. 5 (Tue)	17:00-18:30	PP3653	Study on Logistics and Disaster Management on Earthquakes	Chuluunsetsseg LKHAGVASUREN	Chuluunsetsseg LKHAGVASUREN	School of Mechanics and Transportation, Mongolian University of Science and	Chuluunsetsseg LKHAGVASUREN
			PP3439	Clarifying Intended Information Seeking and Evacuation Behavior of International Tourists to Japan	Sunkyoung CHOI	Sunkyoung CHOI	Tokyo Institute of Technology School of Environment and Society	Sunkyoung CHOI; He RUNZE; Rajali MAHARJAN; Michael HENRY; Shinya HANAOKA;
			PP3737	Tourist Evacuation before Cyclone Fani: Challenges Faced and Roadmap Ahead	Suvarn BANERJEE	Suvarn BANERJEE	Indian Institute of Technology Roorkee	Suvarn BANERJEE; Rajat RASTOGI; Indrajit GHOSH
			PP3362	An Illustrative Numerical Analysis on the Optimum Location of Emergency Ports for eVTOL Aircrafts for Disaster Response and	Rodelia SANSANO	Makoto CHIKARAISHI	Hiroshima University	Rodelia SANSANO; Makoto CHIKARAISHI
			PP3386	Reliability-Based Vulnerability Analysis with Pre-Trip Information	Susilawati SUSILAWATI	Susilawati SUSILAWATI	Monash University Malaysia	Hew CHRISTOPHER; Susilawati SUSILAWATI
Technical Session - 8								
10.50 Transportation and Natural Disasters								
Session Chair: T.B.D								
Session Number	Day	Time	Paper ID	Article Title	Presenter	Corresponding Author	Corresponding Author's Institution	Authors
72	Sep.6 (Wed)	09:00 10:00	PP3703	Investigation of Fatal Incidents in the Philippines Using Drivers Data	Jebus Edrei TAGUIAM	Aaron Michael SALANG	University of The Philippines Diliman	Jebus Edrei TAGUIAM; Aaron Michael SALANG; Harvey Ian ARBAS; Adrian Roy VALDEZ
			PP3568	Comparative Accessibility Analysis of Indigenous Heritage Tourism for Japan, Indonesia, Australia and New Zealand	Li MENG	Li MENG	University of South Australia	Li MENG; Jean-Paul THULL; Takeshi KURIHARA; Monika Y.B.
			PP3514	Historical Transportation Deterrence and Social Tolerance for Long-Distance Travel in Ancient China Revealed by the Social Networks	Wenlong LI	Wenlong LI	Kyoto University	Wenlong LI; Jan-Dirk SCHMÖCKER; Ali-Gul QURESHI; Liang ZHAO
			PP3706	Eigenvector Centrality Analysis for Criticality and Susceptibility of Network Degradation	Hiroe ANDO	Hiroe ANDO	Kumamoto University: Kumamoto Daigaku	Hiroe ANDO; Fumitaka KURAUCHI
			Technical Session - 9					
20.70: Sustainable Transportation Policy								
Session Chair: T.B.D								
Session Number	Day	Time	Paper ID	Article Title	Presenter	Corresponding Author	Corresponding Author's Institution	Authors
82	Sep.6 (Wed)	11:30 13:00	PP3444	Development of Commuter Mode Choice Model Using Traditional and Latent Class Approaches	Sankaran MARISAMYNATHAN	Sankaran MARISAMYNATHAN	Nit-Trichy: National Institute of Technology Tiruchirappalli	B PRAVEEN; Sankaran MARISAMYNATHAN; V KUMAR
			PP3780	Sustainable Development Strategy for Mekong Delta Region	Le Thu HUYEN	Le Thu HUYEN	University of Transport and Communication	Le Thu HUYEN; Cao Phuong THAO
			PP3275	Evaluation of Level of Service (LOS) of Pedestrian Sidewalk in Cimahi City in Indonesia	Agah Muhammad MULYADI	Agah Muhammad Muhammad MULYADI	Regional Development Planning Agency of Cimahi City	Agah Muhammad Muhammad MULYADI; Fritzi Yulia RAHMAWATI; Sidik Baitul ROCHMAT; Casare Adi NUGRAHA; FUSCIVARDO
			PP3771	Evaluating Road Hazard Level for Automated Vehicles Using Real-Road Data in Pangyo Zero City	Younghoon SEO	Hyungjoo KIM	Advanced Institutes of Convergence Technology	Younghoon SEO; Hyungjoo KIM
			PP3516	Examining Gendered Mobility and Public Transport Awareness in Emerging Cities – A Case Study in Jakarta Metropolitan Area, Indonesia	Yuma TSUMURA	Yuma TSUMURA	Oriental Consultants Global Co., Ltd.	Yuma TSUMURA; Agustina Martha KIMBERLY; Ayumi YAMADA; Sahrial SAHRIAL; Hirohisa
Technical Session - 10								
20.30: Project Evaluation								
Session Chair: T.B.D								
Session Number	Day	Time	Paper ID	Article Title	Presenter	Corresponding Author	Corresponding Author's Institution	Authors
92	Sep.6 (Wed)	14:00 15:30	PP3447	Impact Factors of the Investment Cost: Case Study of Vietnam Road Projects	Phuong Thao CAO	Phuong Thao CAO	University of Transport and Communications	Thi Hau NGUYEN; Phuong Thao CAO; Chi HUYEN LE
			PP3322	Level of Service Based Performance Model of Blue Line of Delhi Metro Post-COVID-19	Salman KHURSHIED	Salman KHURSHIED	Jamia Millia Islamia Faculty of Engineering and Technology	Salman KHURSHIED; Farhan Ahmad KIDWAI
			PP3313	Economic Impact Analysis of Developing the 21st Century Transport Infrastructure	Tetsuji SATO	Tetsuji SATO	Chiba Institute of Technology	Tetsuji SATO; Tetsuji SATO; Tetsuji SATO
			PP3309	An Empirical Analysis for Estimating Construction Duration of Road Projects in Developing Countries	Dinh Van HIEP	Dinh Van HIEP	Institute of Planning and Transportation Engineering.	Dinh Van HIEP; Dinh Van HIEP; Jamshid SODIKOV; Ibragim SADIKOV
Technical Session - 11								
120.10: Emerging Technology (C-ITS/Autonomous IoT)								
Session Chair: T.B.D								
Session Number	Day	Time	Paper ID	Article Title	Presenter	Corresponding Author	Corresponding Author's Institution	Authors
20	Sep.6 (Wed)	15:45 17:15	PP3605	Heuristic Approach for the Optimization of Demand Responsive Transport Scheduling Problem	Hyun Su PARK	Shin Hyoung PARK	University of Seoul	Hyun Su PARK; Shin-Hyung CHO; Inhi KIM; Soobom LEE; Shin Hyoung
			PP3410	Research Status of EV-Charging Infrastructure and Policy Recommendations	Beomil KIM	Beomil KIM	Korea Transport Institute	Beomil KIM; Hee Chol SHIN
			PP3715	Examining the Use Patterns and Preferences of Privately-Owned Personal Mobility Devices: Implications for Municipal Strategic	Abraham LEUNG	Abraham LEUNG	Griffith University	Abraham LEUNG
			PP3830	Japanese Trends in EV Infrastructure Projects from Usability, Subsidy, and Location Perspectives	Yudai HONMA	Yudai HONMA	The University of Tokyo	Yudai HONMA
			PP3834	A Survey on E-Hailing and Demand Responsive Transit Services as First Last Mile Mode in the Klang Valley	Chin Kar KEONG	May Yen CHU	Heriot-Watt University Malaysia	Kar Keong CHIN; Jia Jun GAN; May Yen CHU
Room C-Seminar Room2 (S2)								
10.40: Survey and Data Collection								
Session Chair: T.B.D								
Session Number	Day	Time	Paper ID	Article Title	Presenter	Corresponding Author	Corresponding Author's Institution	Authors

3	Sep. 4 (Mon)	14:00 15:30	PP3582	Investigating of the Behavior and Speed of Vehicles across Speed Humps and Bumps	Porntep PUANGPRAKHO	Porntep PUANGPRAKHON	Mahanakorn University of Technology	Porntep PUANGPRAKHON	
			PP3700	Developing Scenario to Understand Stressful Situations for Elderly Drivers Using Text Mining Techniques	Nakhyeon CHOI	Junghwa KIM	Kyonggi University	Nakhyeon CHOI; Junghwa KIM; Jeongah JANG	
			PP3824	Development and Application of a Web-Based Traffic "Hiyari-Hatto" (Close Call) Experience Survey System	Hideki KATO	Hideki KATO	Toyota Transportation Research Institution	Hideki KATO; Yuta MARU; Kazuma NAKAZAWA; Yu SUZUKI; Kenichi	
			PP3551	Development of Traffic Measurement AI for Bicycles and Pedestrians, and Study Methods of Utilizing the Acquired Information	Kentaro OBARA	Kentaro OBARA	Tokyo University of Science	Kentaro OBARA; Hideki YAGINUMA; Shintaro TERABE; Haruka UNO; Yu SUZUKI	
			PP3611	Extended Whipple's Index to Measure the Quality of Travel Surveys Using Rounding in Reported Time: a Comparison across Developing	Yoshihiro SATO	Yoshihiro SATO	Kyoto Koka Women's University	Yoshihiro SATO; Takuya MARUYAMA	
Technical Session - 2		10.40: Survey and Data Collection Session Chair: T.B.D							
Session Number	Day	Time	Paper ID	Article Title	Presenter	Corresponding Author	Corresponding Author's Institution	Authors	
13	Sep. 4 (Mon)	15:45 17:15	PP3369	Estimating the Number of Visitors in Tourist Attraction Facilities Using Wi-Fi Packet Sensors	Daichi MITSUI	Daichi MITSUI	Tokyo University of Science - Noda Campus	Daichi MITSUI; Shintaro TERABE; Hideki YAGINUMA; Haruka UNO; Yu	
			PP3757	Towards an Estimate of On-Road Emission Inventory in a Low-And-Middle Income Setting: Data, Methods, and Challenges	Asha S VISWANATHAN	Asha S VISWANATHAN	Indian Institute of Technology Delhi	Asha S VISWANATHAN; Rahul GOEL	
			PP3530	Study on the Willingness of Commuters to Shift towards Motorcycle Ride-Hailing	Muhammad Saifuddin Bin Mohamed REHAN	Muhammad Saifuddin Bin Mohamed REHAN	International Islamic University Malaysia Kulliyah of Engineering	Muhammad Saifuddin Bin Mohamed REHAN; Muhammad Faiz Bin Ahmad FAUZI	
			PP3770	Who Are the Cyclists and What Are the Characteristics of Their Cycle-Use in a Large Metropolitan City in India?	Srishti AGRAWAL	Srishti AGRAWAL	Indian Institute of Technology Delhi	Srishti AGRAWAL; Smruthi Bala KANNAN; Kavi BHALLA; Rahul Wendi HAN; Hitomi NAKANISHI; Milica MUMINOVIC; Jee YOUNG-	
PP3789	How SNS Platform Could Be an Effective Tool for Collecting Data on Travel Behaviour?	Wendi HAN	Wendi HAN	University of Canberra Faculty of Arts And Design	Wendi HAN; Hitomi NAKANISHI; Milica MUMINOVIC; Jee YOUNG-				
Technical Session - 3		10.40: Survey and Data Collection Session Chair: T.B.D							
Session Number	Day	Time	Paper ID	Article Title	Presenter	Corresponding Author	Corresponding Author's Institution	Authors	
23	Sep. 5 (Tue)	09:00 10:00	PP3724	Proposing An Accurate Counting Method for Moving Objects by Optimizing Count-Line Placement	Yuzuki HAGA	Yuzuki HAGA	Tokyo University of Science School of Engineering	Yuzuki HAGA; Hideki YAGINUMA; Shintaro TERABE; Haruka UNO; Yu SUZUKI	
			PP3329	Trip-Chain Pattern Analysis of Commercial Vehicles Using Probe Data	Ryosuke MAEDA	Takuya MARUYAMA	Kumamoto University	Ryosuke MAEDA; Hiroe ANDO; Takuya MARUYAMA	
			PP3527	Potential and Barriers of Promoting Electric Vehicle Sharing Services for Tourists in Japan's Non-Urban Destinations	Yue WANG	Yue WANG	Nagoya University Graduate School of Engineering School of Engineering	Yue WANG; Meilan JIANG; Toshiyuki YAMAMOTO; Jia YANG; Motohiro YAMAZAKI	
			PP3806	Analysis of the Effect of COVID-19 Infection Status in Other Regions on the Use of Public Transportation	Akito TSUJI	Akito TSUJI	Yamaguchi University Graduate School of Sciences and Technology For Innovation	Akito TSUJI; Takeshi UTSUMI; Haruna SUZUKI	
Technical Session - 4		40.10: Logistics and Freight Transportation Policy Session Chair: T.B.D							
Session Number	Day	Time	Paper ID	Article Title	Presenter	Corresponding Author	Corresponding Author's Institution	Authors	
33	Sep. 5 (Tue)	11:30 13:00	PP3270	Operational Performance Evaluation of a Container Terminal Daily Report Using Data Mining and Simulation	Tiago Novaes MATHIAS	Tiago Novaes MATHIAS	Kyushu University	Tiago Novaes MATHIAS; Hideyo INUTSUKA; Takeshi SHINODA; Yoshihisa SUGIMURA	
			PP3643	A Freeway Dispatch Model by Considering Redeployment of Response Teams Over Temporary Sites	Yu-Ting HSU	Yu-Ting HSU	National Taiwan University	Yu-Ting HSU	
			PP3791	Analysis of Warehouse Location Selection to Meet E-Warong Demand in Non Cash Food Assistance Program in Cirebon	Nurlaela Kumala DEWI	Nurlaela Kumala DEWI	Institut Teknologi Bandung	Nurlaela Kumala DEWI; Kresna PASTAVIARUM	
			PP3790	Analysis of Jabodetabek Dry Port Location Model with Consideration of Transport Commodity Flow to Industry Area	Nurlaela Kumala DEWI	Nurlaela Kumala DEWI	Institut Teknologi Bandung	Nurlaela Kumala DEWI; Riza ISHAK	
Technical Session - 5		40.10: Logistics and Freight Transportation Policy Session Chair: T.B.D							
Session Number	Day	Time	Paper ID	Article Title	Presenter	Corresponding Author	Corresponding Author's Institution	Authors	
43	Sep. 5 (Tue)	14:00 15:30	PP3729	Introducing AGV System for Cross-Border Coal Transport	Delgermasan MISHIG	Delgermasan MISHIG	Mongolian University of Science and Technology	Delgermasan MISHIG; Munkbold ADIYA; Bathkurel GOMBODORJ	
			PP3454	Analysis of North-South Commuter Railway as a Sustainable Logistics Transportation Mode Using Logistic Regression	Lira Akira V. FRONDA	Geoffrey Lastrilla CUETO	Mapua Institute of Technology	Lira Akira Valdez FRONDA; Aeron John BRINCES; Jan Denzel LAJOM; Geoffrey CUETO	
			PP3421	Optimization of Empty Container Cost for Each Port Considering Dynamic Stochastic Factors	Bhidara SWANTIKA	Bhidara SWANTIKA	Universitas Indonesia Fakultas Teknik	Bhidara SWANTIKA; Soetanto SOEHODHO; Nahry NAHRY	
			PP3790	Analysis of Jabodetabek Dry Port Location Model with Consideration of Transport Commodity Flow to Industry Area	Nurlaela Kumala DEWI	Nurlaela Kumala DEWI	Institut Teknologi Bandung	Nurlaela Kumala DEWI; Riza ISHAK	
			PP3811	Optimization of Empty Container Cost for Each Port Considering Dynamic & Stochastic Factors	Bhidara SWANTIKA	Sutanto SOEHODHO	University of Indonesia	Bhidara SWANTIKA; Sutanto SOEHODHO; Nahry NAHRY	
Technical Session - 6		40.10: Logistics and Freight Transportation Policy 40.40: Operation and Management in Logistics Business Session Chair: T.B.D							
Session Number	Day	Time	Paper ID	Article Title	Presenter	Corresponding Author	Corresponding Author's Institution	Authors	
53	Sep. 5 (Tue)	15:45 17:15	PP3318	Factors Contribute to Road Crashes: Analysis from Cargo Motorcycle Riders and Application for City Logistics in Hanoi,	Truong Thi My THANH	Thanh Thi-My TRUONG	University of Transport Technology	Truong Thi My THANH	
			PP3278	Assessing the Acceptance of Implementing Autonomous Vehicles in Last-Mile Delivery from the Perspective of Logistics Employees	Cheng-Hsien HSIEH	Cheng-Hsien HSIEH	Singapore University of Social Sciences	Cheng-Hsien HSIEH; Nicole Xue Ting LIAU; Hui Shan LOH; Yu-Kai HUANG; Edwin LEE;	
			PP3464	A Multi-Modal Planning and Comparison Model for Autonomous Delivery Systems with a Demonstrative Case Study of Singapore	Jacob LAMB	Jacob LAMB	University of Calgary Schulich School of Engineering	Jacob LAMB; S. C. WIRASINGHE; Nigel WATERS	
			PP3791	Analysis of Warehouse Location Selection to Meet E-Warong Demand in Non Cash Food Assistance Program in Cirebon	Nurlaela Kumala DEWI	Nurlaela Kumala DEWI	Institut Teknologi Bandung	Nurlaela Kumala DEWI; Kresna PASTAVIARUM	
			PP3462	Investigating Opportunities of Adopting Sharing Economy in Urban Logistics in Hanoi, Vietnam	Pham Van BACH	Thanh Thi-My TRUONG	University of Transport Technology	Bach Van PHAM; Thanh Thi-My TRUONG	
Technical Session - 7		40.30: City Logistics Session Chair: T.B.D							
Session Number	Day	Time	Paper ID	Article Title	Presenter	Corresponding Author	Corresponding Author's Institution	Authors	
63	Sep. 5 (Tue)	17:00-18:30	PP3282	Analysis of Factors Affecting E-Logistics Services on Urban Management at Hochiminh City, Vietnam	Trinh Thi PHIN	Dinh Tuan HAI	Hanoi Architectural University	Dinh Tuan HAI; Nguyen QUYET; Trinh PHIN	
			PP3600	Impacts of Congestion Charging on Light-Truck Goods Delivery in Hanoi, Vietnam	Duc Bao Oanh VU	Duc Bao Oanh VU	Tokyo Metropolitan University Faculty of Urban Environmental Sciences Graduate School of Urban Environmental Sciences	Duc Bao Oanh VU; Hironori KATO; Shinichi TAKEDA; Le Binh PHAN	
			PP3659	A Flexible Routing Problem with Agents for the Application of Vaccine Last-Mile Distribution	Kuancheng HUANG	Kuancheng HUANG	National Yang Ming Chiao Tung University	Kuancheng HUANG; Ning KUO	
			PP3831	Using Tabu Search for Integrated Batch Picking and Vehicle Routing Problem	Chung-Wei SHEN	Chung-Wei SHEN	National Cheng Kung University	Chung-Wei SHEN; Le-Ting YEH; Shen-Fang JHUANG	
			PP3435	A Hybrid Iterative Local Search and Randomized Variable Neighborhood Descent Heuristic for the Periodic Capacitated Arc Routing Problem and Its Application	Ching-Jung TING	Ching-Jung TING	Yuan Ze University	Ching-Jung TING; Li-Chun LU; Chi-Yang TSAI	
Technical Session - 8		10.30: International Cooperation Session Chair: T.B.D							
Session Number	Day	Time	Paper ID	Article Title	Presenter	Corresponding Author	Corresponding Author's Institution	Authors	
73	Sep.6 (Wed)	09:00 10:00	PP3657	A Methodological Framework for Estimating Passenger and Freight Performance on Expressways Using Big Data	Youjong KANG	Jungeol HONG	Keimyung University	Youjong KANG; Jungeol HONG; Yoonyuk CHOI	
			PP3268	Risk Determination for the PPPs of Road Infrastructure Development in Vietnam	Dinh Tuan HAI	Dinh Tuan HAI	Hanoi Architectural University	Dinh Tuan HAI; Nguyen Hong THAI	
			PP3713	Analysis of Mongolian Transport and Warehousing Sector	Delgermasan MISHIG	Delgermasan MISHIG	Mongolian University of Science and Technology	Delgermasan MISHIG; Ayush ANDRIE; Bathkurel GOMBODORJ	
			PP3490	Analysis on Time Allocation Among Home, Office, and Satellite Office Based Work Considering Work Environment	Yuchen ZHANG	Yuchen ZHANG	Nagoya University Graduate School of Environmental Studies	Yuchen ZHANG; Hitomi SATO; Meilan JIANG; Takayuki MORIKAWA	
Technical Session - 9		30.30: Network Analysis and Traffic Assignment Session Chair: T.B.D							
Session Number	Day	Time	Paper ID	Article Title	Presenter	Corresponding Author	Corresponding Author's Institution	Authors	
83	Sep.6 (Wed)	11:30 13:00	PP3280	Study of Urban Traffic in Adelaide Metropolitan Area: A Spatiotemporal Analysis	Keyvan POURHASSAN	Keyvan POURHASSAN	University of South Australia - Mawson Lakes Campus	Keyvan POURHASSAN; Sekhar SOMENAHALLI	
			PP3495	Optimizing Alternative Routes for Road Closures Using Real-Time Traffic Volume Data	Moe Sandi ZAW	Moe Sandi ZAW	Transportation Engineering	Moe Sandi ZAW	
			PP3437	An Explorative Analysis on the Occurrence of Braess's Paradox	Tetsuro SAKAI	Makoto CHIKARAISHI	Hiroshima University	Tetsuro SAKAI; Makoto CHIKARAISHI; Akimasa FUJIWARA	
			PP3427	Inflow Traffic to a Specific Community Capturing Link Design Problem Independent of User Routing Assumptions	Ruri SASE	Satoshi SUGIURA	Hokkaido University Faculty of Engineering	Ruri SASE; Satoshi SUGIURA	
			PP3283	Traffic Sensor Location Model Based on Graph Search Method	Han-Tsung LIOU	Han-Tsung LIOU	National Kaohsiung University of Science and Technology	Han-Tsung LIOU; Yu-Pei CHEN	
Technical		30.20: Travel Demand Modeling and Forecasting							

Session - 10				Session Chair: T.B.D				
Session Number	Day	Time	Paper ID	Article Title	Presenter	Corresponding Author	Corresponding Author's Institution	Authors
93	Sep.6 (Wed)	14:00 15:30	PP3574	Tourist Excursion Model Considering Trip Chain Choice and Duration of Stay	Ryuichi TANI	Ryuichi TANI	Hokkaido University Faculty of Engineering	Ryuichi TANI; Haruki SHIMIZU; Kenetsu UCHIDA; Daisuke FUKUDA
			PP3493	A Method for Estimation of Traffic States Considering Floating Car Data in a Large Network	Kaifeng DUAN	Kaifeng DUAN	Hokkaido University Faculty of Engineering	Kaifeng DUAN; Ryuichi TANI; Kenetsu UCHIDA; Keita ZUSHII; Osamu NAGAOKA;
			PP3768	Monte Carlo Tree Search Approach for Multi-Period Network Design Problem under Uncertain Demand	Michiki AKIOKA	Satoshi SUGIURA	Hokkaido University Faculty of Engineering	Michiki AKIOKA; Satoshi SUGIURA
			PP3825	Empirical Comparison of Model Sensitivity Between 4-Step and Activity-Based Models in the Same Modelling Platform	Vipul MODI	Vipul MODI	Bentley Systems Inc	Vipul MODIC; Gaurav VYAS; Peter VOVSHA
			PP3381	The Impact of Accessibility Facilities on High Speed Railway (HSR) Demand.	Andyka KUSUMA	Andyka KUSUMA	Universitas Indonesia	Andyka KUSUMA; R Ivan ADWITIA; Bhidara SWANTIKA; Tri TIAHJONO; Adil AFRIZAL;
Technical Session - 11				120.10: Emerging Technology (C-ITS/Autonomous/IoT) 120.20: New Transport Industry (Car-Sharing/Carpool/Bike-Sharing/Uber/Personal Mobility)				
Session Chair: T.B.D								
Session Number	Day	Time	Paper ID	Article Title	Presenter	Corresponding Author	Corresponding Author's Institution	Authors
30	Sep.6 (Wed)	15:45 17:15	PP3387	Reassessment and Determination of Star Rating of Schools Using Spot Checks and SR4S Tool during COVID-19 Pandemic	Sahid KAMID	Glenn Simon Dayrit LATONERO	University of the Philippines Diliman	Glenn Simon Dayrit LATONERO; Sahid KAMID; Jose REGIDOR;
			PP3463	Proof of Concept on District Mobility Service Using Small Electric Vehicles toward Realizing a Decarbonized City	Tsuyoshi TAKANO	Tsuyoshi TAKANO	Nippon Engineering Consultants Co. Ltd	Tsuyoshi TAKANO; Hiroyoshi MORITA; Masato MIYATA; Chun-Chen CHOU; Kento YOH; Kenji DOI
			PP3348	Application of Sustainability Indicators to Local Public Transport Planning for Small and Medium Cities	Maria GARCIA	Maria GARCIA	Yokohama National University Institute of Urban Innovation	Maria GARCIA; Fumihiko NAKAMURA; Mihoko MATSUYUKI; Shinji TANAKA; Ryoosuke ABE;
			PP3553	Analyzing Pedestrians' Perception of Security during Actual Walking: The Effects of Built Environment and Spatial	Shangrui LI	Shangrui LI	Tokyo Institute of Technology School of Environment and Society	Shangrui LI; Yasunori MUROMACHI
Room D-Seminar Room3 (S3)								
Technical Session - 1				20.10 Pricing				
Session Chair: T.B.D								
Session Number	Day	Time	Paper ID	Article Title	Presenter	Corresponding Author	Corresponding Author's Institution	Authors
4	Sep. 4 (Mon)	14:00 15:30	PP3554	Analysis of Price Elasticity of Hanoi MRT Line 2A in Comparison with Manila MRT Line 3 and Jakarta MRT	Dinh Van HIEP	Atsushi FUKUDA	Nihon University	Atsushi FUKUDA; Dinh Van HIEP; Kota IWANAMI; Tran Manh HUNG; Alexis M FILLONE
			PP3452	Simultaneous Optimization of Network and Fares for Self-Financing Public Transportation System	Atsushi SUGAMA	Atsushi SUGAMA	Tohoku University	Atsushi SUGAMA; Makoto OKUMURA
			PP3485	Comparative Analysis of Various Pedestrian-Crossing Facilities on Highways and the Selection of a Cost-Effective Facility by Maximizing the Benefit Cost Ratio	Md Atiqullah BHUIYAN	Md Atiqullah BHUIYAN	Yokohama National University; Yokohama Kokuritsu Daigaku	Md Atiqullah BHUIYAN; Mihoko MATSUYUKI; Shinji TANAKA
			PP3517	How Does Price Affect the Utilization of Ridesourcing Services: Evidence From Uber Japan's Experiments	Krittana Sriwongphanawes	Krittana Sriwongphanawes	The University of Tokyo Graduate School of Engineering School of Engineering	Krittana Sriwongphanawes; Daisuke FUKUDA
			PP3599	What If Malaysia Adopts 'Income-Based Day Fine'?	Mohd Danii Dochow Bin Mohd Faisal FRANK	Ahmad Azad Ab RASHID	Malaysian Institute of Road Safety Research	Mohd Danii Dochow Bin Mohd Faisal FRANK; Ahmad Azad Ab RASHID; Ummi Sabariah MAHAMUD
Technical Session - 2				20.70 Sustainable Transportation Policy				
Session Chair: T.B.D								
Session Number	Day	Time	Paper ID	Article Title	Presenter	Corresponding Author	Corresponding Author's Institution	Authors
14	Sep. 4 (Mon)	15:45 17:15	PP3532	Digital Transformation in Public Transport Management in Hai Phong City, Vietnam: the Way to Sustainable Development	Nguyen Quang THANH	Nguyen Quang THANH	Vietnam Maritime University	Nguyen Quang THANH
			PP3428	How to Classify Performance Level for Demand Responsive Transport Services: A Context-Dependent Data Envelopment	Barbara T.H. YEN	Barbara T.H. YEN	National Yang Ming Chiao Tung University	Barbara T.H. YEN; Shuo-Chen HSIEH; Jin-Yuan WANG
			PP3746	Potential of Using Commuting Allowance for Modal Shift of Government Officials: A Case Study in Vientiane, Lao Pdr	Souphany HEUANGKEO	Souphany HEUANGKEO	Yokohama National University	Souphany HEUANGKEO; Fumihiko NAKAMURA; Shinji TANAKA; Mihoko MATSUYUKI; Ryoosuke ABE; Naoki MURAYAMA
			PP3796	Development of A Bus Rapid Transit System (BRT) in Hai Phong City, Vietnam: from Lessons of Experience to Practical Application	Nguyen Quang THANH	Nguyen Quang THANH	Vietnam Maritime University	Nguyen Quang THANH
			PP3395	Evaluating Air Route Performance with Context-Dependent Data Envelopment Analysis: A Case Study in Taiwan	Xin WANG	Wen-Chun TSENG	Cquiversity: Central Queensland University	Wen-Chun TSENG; Xin WANG; Yu-Cheng TING
Technical Session - 3				40.20: International and Inter-Regional Logistics				
Session Chair: T.B.D								
Session Number	Day	Time	Paper ID	Article Title	Presenter	Corresponding Author	Corresponding Author's Institution	Authors
24	Sep. 5 (Tue)	09:00 10:00	PP3473	An Evaluation Framework of Logistics Service Provider Selections in Vietnam	Yi-Chun CHEN	Yi-Chun CHEN	National Dong Hwa University	Cheng-Chieh (Frank) CHEN; Dong Hai LY; Yi-Chun CHEN
			PP3528	Improving the Malaysia-Thailand Economic Relationship through Cross-Border Logistics Efficiency in Bukit Kayu Hitam	Mohamad Ghazali HASSAN	Mohamad Ghazali HASSAN	Universiti Utara Malaysia Kolej Perniagaan	Mohamad Ghazali HASSAN; Nur Shaheedah Mat SHAH; Safiyah Noor Khaiiril AZLI
			PP3450	Optimization Container Availability within International Trade with Support Digital Economy Development	Bhidara SWANTIKA	Bhidara SWANTIKA	Universitas Indonesia Fakultas Teknik	Bhidara SWANTIKA; Sutanto SOEHODHOK; Nahry NAHRY
			PP3429	Scenario Analysis on CO2 Emission Reductions in Hinterland Transport of Japan Using the Global Logistics Intermodal Network Simulation Model	Ryutarō MATSUYAMA	Ryuichi SHIBASAKI	Tokyo Daigaku Daigakuin Kogakukai Kenkyuka Kogakubu	Ryutarō MATSUYAMA; Yoshihisa SUGIMURA; Ryuichi SHIBASAKI; Tran TRANG
Technical Session - 4				80.10: Highway Planning and Design Concept				
Session Chair: T.B.D								
Session Number	Day	Time	Paper ID	Article Title	Presenter	Corresponding Author	Corresponding Author's Institution	Authors
34	Sep. 5 (Tue)	11:30 13:00	PP3382	Feasibility of Providing Advance U Turn Facility Under a Flyover – Case Study from Kohuwala Flyover, Sri Lanka	Dileepa FERNANDO	Dileepa FERNANDO	Master Helli's Engineering Consultants	Dileepa FERNANDO; Tissa LIYANAGE; Gayashan
			PP3317	Assessing the Relationship Between Speed Behavior and Road Features of a Semi-Urban Mountainous Road Using Multivariate Regression	Nitesh ACHARYA	Nitesh ACHARYA	Shibaura Institute of Technology - Toyosu Campus; Shibaura Kogyo Daigaku	Nitesh ACHARYA; Michael HENRY
			PP3390	Influence of Socio-Demographic, Experience, and Geometric Factors on Drivers' Ability to Distinguish Sharpness of Consecutive	Mohd ATIF	Mohd ATIF	Indian Institute of Technology Indore	Mohd ATIF; Gourab SIL; Avijit MAJI
			PP3259	Road Event Detection and Situation Classification Framework	Jongmin NOH	Ilsoo YUN	Ajou University	Jongmin NOH; Soomok LEE; Sanghyun LEE; Jinyoung KIM; Hwanpil LEE; Ilsoo YUN
			PP3398	Investigation of Road Visibility Conditions Using Precipitation Intensity Measured by Weather Radar during Winter Seasons	Yuki NAKAMURA	Yuki NAKAMURA	Hokkaido University Faculty of Engineering	Yuki NAKAMURA; Toru HAGIWARA; Sho TAKAHASHI; Yasuhiro NAGATA; Ryoichi TSURUMAKI; Naoki MATSUOKA
Technical Session - 5				60.10: Transportation and Environment				
Session Chair: T.B.D								
Session Number	Day	Time	Paper ID	Article Title	Presenter	Corresponding Author	Corresponding Author's Institution	Authors
44	Sep. 5 (Tue)	14:00 15:30	PP3324	When Cyclability and Walkability Contradict Each Other: The Case Study of Amagasaki-Shi Evaluation of Japanese Cities from a	Lucas BELLARD	Lucas BELLARD	Waseda University - Nishiwaseda Campus	Lucas BELLARD; Naohiro KITANO; Akinori MORIMOTO
			PP3431	A Bayesian Maximum Entropy Approach to Assess Air Pollution Exposure along Cycling Routes in Taipei, Taiwan	Joshua Philip Calatec SUAREZ	Joshua Philip Calatec SUAREZ	National Taiwan University	Joshua Philip Calatec SUAREZ; Hwa-Lung YU; S.K. Jason CHANG
			PP3433	Optimizing the Waste Cooking Oil as Rejuvenator for Higher Reclaimed Asphalt: A Rheological, Economical, and Environmental	Shobhit JAIN	Anush CHANDRAPPA	IIT Bhubaneswar	Shobhit JAIN; Anush CHANDRAPPA
			PP3665	Towards Accelerating the Reduction of GHG Emission in International Shipping - Analysis of Life Cycle Assessment of New	Shinya SUZUKI	Shinya SUZUKI	Japan Transport and Tourism Research Institute (JTTRI)	Shinya SUZUKI; Shinichiro OTSUBO; Tomohito TAKEUCHI
			PP3658	Examining the Impacts of Potential Implementation of a Smart Traffic Signaling System along Edsa-Shaw Intersection on the Improvement of Traffic Flow and Reduction of Carbon Emissions	Ian Dominic E. PULMANO	Geoffrey Lastrilla CUETO	Mapua Institute of Technology	Ian Dominic Esteban PULMANO; Lance Rafael JIMENEZ; Arvin Xavier LADIGNON; Geoffrey CUETO
Technical Session - 6				60.10: Transportation and Environment				
Session Chair: T.B.D								
Session Number	Day	Time	Paper ID	Article Title	Presenter	Corresponding Author	Corresponding Author's Institution	Authors
54	Sep. 5 (Tue)	15:45 17:15	PP3533	Budget Approximation for Optimal Highway Network Retrofit Problems	Ponlathep LERTWORAWANICH	Ponlathep LERTWORAWANICH	Thailand Department of Highways	Ponlathep LERTWORAWANICH
			PP3557	Estimation of Local Pollutant and Carbon Dioxide Emissions of Road and Rail Transportation in the Philippines	Julshabar U. HALIL	Julshabar Umih HALIL	University of The Philippines Diliman	Karl VERGEL; Julshabar Umih HALIL; Cherie Lynne GOMINTONG; Kelvin Ryan MARCELO
			PP3581	A Methodology on the Evaluation of Electrification of an Inland Waterway Passenger Ferry	Sheryl DIOKNO	Sheryl Espiritu DIOKNO	University of The Philippines At Diliman College of Engineering	Sheryl Espiritu DIOKNO; Rovinna Janel TAYO; Brandon James CIPRIANO; Lew Andrew TRIA; Paul RODGERS; Karl VERGEL
			PP3375	A Study on Environmental Impact of Electric Buses in the City of Ulaanbaatar	Bayarsaikhan TSEND-AYUSH	Bayarsaikhan TSEND-AYUSH	School of Mechanical Engineering	Bayarsaikhan TSEND-AYUSH

Technical Session - 7		60.20: Climate Change and Transportation						
Session Number	Day	Time	Paper ID	Article Title	Presenter	Corresponding Author	Corresponding Author's Institution	Authors
64	Sep. 5 (Tue)	17:00-18:30	PP3540	Comparing the Environmental Impact of Conventional and Electric Jeeps, Accounting for Idling Emissions: A Case Study Using Actual Transportation Data from Up Diliman Campus	Arse John SALISON	Arse John SALISON	Up National Center for Transportation Studies	Arse John SALISON; Sheila Flor JAVIER; Jerome BALLARTA
			PP3488	UV Ageing Assessment of Asphalt Binder: Influence of Duration and Zinc Oxide	Anush K. CHANDRAPPA	Anush CHANDRAPPA	Indian Institute of Technology Blubaneswar	Suhas PANDHAWALE; Shobhit JAIN; Anush CHANDRAPPA; Vijayakrishna KARI
			PP3359	Transport Decarbonisation in Asia – Is the Glass Half Full?	Sudhir GOTA	Alvin Asuncion MEJIA	Urban Electric Mobility Initiative	Alvin Asuncion MEJIA; Sudhir GOTA; Herbert FABIAN
			PP3747	Climate Change & Road Transport in Nepal	Sharad K. SHRESTHA	Sharad K. SHRESTHA	Ministry of Physical Infrastructure and Transport(Former)	Sharad K. SHRESTHA
			PP3748	Policy of Battery Electric Vehicle Charging Infrastructure in Taiwan	Timo ECCARIUS	Timo ECCARIUS	Tunghai University	Timo ECCARIUS; Tsu-Jui CHENG
Technical Session - 8		20.70 Sustainable Transportation Policy						
Session Number	Day	Time	Paper ID	Article Title	Presenter	Corresponding Author	Corresponding Author's Institution	Authors
74	Sep.6 (Wed)	09:00 10:00	PP3687	Quality Enhancement of Heritage Neighborhood in Kotabaru, Yogyakarta, Through Sustainable and Resilient Transport	Najmuna Ratri LAKSHITA	Najmuna Ratri LAKSHITA	Universitas Gadjah Mada	Najmuna Ratri LAKSHITA; Chrysan BHANUWATI; Luthfia PRASTIWI; Tri SUNARHARUM
			PP3696	Impact of Urban Morphology on Transportation Preferences in Fostering the Sustainable Development of Emerging Urban Centers	Ankhi BANERJEE	Tazeen ALAM	Indian Institute of Technology Kharagpur	Tazeen ALAM; Ankhi BANERJEE
			PP3504	Evaluating Vehicle Fleet Electrification against Net-Zero Targets in Scooter-Dominated Road Transport: A Case Study of Taiwan	I-Yun Lisa HSIEH	I-Yun Lisa HSIEH	National Taiwan University	Chia-Yu TSAI; Tsung-Heng CHANG; I-Yun Lisa HSIEH
			PP3279	Reasons for the Surrogate Inconvenient Trans from the Circular Economy	Rene S SANTIAGO	Rene S SANTIAGO	Bellwether Advisory Inc.	Rene S SANTIAGO
Technical Session - 9		20.50: TDM Policy and Mobility Management						
Session Number	Day	Time	Paper ID	Article Title	Presenter	Corresponding Author	Corresponding Author's Institution	Authors
84	Sep.6 (Wed)	11:30 13:00	PP3293	Determinants for Modal Shift of School Children from Private Vehicles to Public Transport: A Case Study in Metro Manila.	Yvette Kirsten RIVERA	Yvette Kirsten RIVERA	University of The Philippines Diliman School of Urban and	Yvette Kirsten RIVERA; Jun CASTRO
			PP3677	A priori Estimation of Residential and Mode Choice Behaviour among Potential Dwellers of Transit Oriented Development (TOD)	Arkapal K GOSWAMI	Manoj B S	Indian Institute of Technology Kharagpur	Manoj B S; Arkopal K GOSWAMI
			PP3501	Improvement of Functions around High-Speed Railway Stations in Beibuwan Agglomeration	Ming ZHANG	Ming ZHANG	Mazhanggu	Zhang MING; Takaaki OKUDA
			PP3424	Road Congestion Pricing for Proactively Enhancing Network Resilience against Uncertain Major Disruptions	Kai QU	Kai QU	Tongji University	Kai QU; Xiangdong XU; Anthony CHEN
Technical Session - 10		20.50: TDM Policy and Mobility Management						
Session Number	Day	Time	Paper ID	Article Title	Presenter	Corresponding Author	Corresponding Author's Institution	Authors
94	Sep.6 (Wed)	14:00 15:30	PP3761	Assessment of Off-Street Parking Demand and Management: A Case Study of Vr Mall in Surat, India	Ayushi SHAH	Ayushi Vineshkumar SHAH	Sardar Vallabhbhai National Institute of Technology	Ayushi Vineshkumar SHAH; Gaurang JOSHI
			PP3635	Car-Use Reduction Policy Implications through Travel Mode Choice Modeling of University Students and Employees	Mathew Harvey PERALTA	Mathew Harvey T PERALTA	University of The Philippines Diliman	Mathew Harvey T PERALTA
			PP3323	Can Voluntary Behavior Change (VBC) Program Promote Low Carbon Mobility among Adolescents?	Nur Sabahiah Abdul SUKOR	Nur Sabahiah Abdul SUKOR	Universiti Sains Malaysia	Nur Sabahiah Abdul SUKOR; Siti Asmah HASSAN
			PP3380	Introducing Agv for Cross-Border Coal Transport	Delgermasan MISHIG	Delgermasan MISHIG	Mongolian University of Science and Technology	Delgermasan MISHIG; Munkhbold ADIYA; Batkhurel GOMBODORJ
Technical Session - 11		130.20: Policy, Planning and Management						
Session Number	Day	Time	Paper ID	Article Title	Presenter	Corresponding Author	Corresponding Author's Institution	Author
40	Sep.6 (Wed)	15:45 17:15	PP3609	Identifying Suitable Locations of Electric Vehicle (EV) Chargers in Quezon City Using Geographic Information System (GIS)	Rachel HABANA	Rachel Ross HABANA	Department of Science and Technology	Rachel Ross HABANA; Crystal ANORE; Maria Phillina SANTOS; Roxanne VERGARA; Carla ALIPIO;
			PP3655	Policy Review and Assessment on the Different Philippine Regulations on Planning and Operations of Maritime and Land	Rachel HABANA	Rachel Ross HABANA	Department of Science and Technology	Rachel Ross HABANA; Hussein LIDASAN
			PP3667	Measures to Strengthen the Infrastructure and Business Innovation of the Local Transportation Industry in Japan	Fumihisa HARUNA	Fumihisa HARUNA	Japan Transport and Tourism Research Institute	Takeharu JOFUKU; Fumihisa HARUNA; Takatoshi KOYA; Mitsuhiro TSUKAMOTO; Atsushi NIKURA; Hirota YAMAUCHI
			PP3643	A Freeway Dispatch Model by Considering Redeployment of Response Teams Over Temporary Sites	Yu-Ting HSU	Yu-Ting HSU	National Taiwan University	Yi-Hsiang CHOU; Yu-Ting HSU
			PP3669	Japan's Public Transportation Strategy in 2050	Atsushi NIKURA	Atsushi NIKURA	Japan Transport and Tourism Research Institute	Shigeru MORICHI; Hironori KATO; Daisuke FUKUDA; Makoto ITO; Atsushi KAIYA; Atsushi NIKURA
Room E-Seminar Room4 (S4)		30.10 Travel Behavior Analysis						
Session Number	Day	Time	Paper ID	Article Title	Presenter	Corresponding Author	Corresponding Author's Institution	Authors
5	Sep. 4 (Mon)	14:00 15:30	PP3480	Predicting Taxi Demand in Urban Areas by the Application of Hybrid Machine Learning Algorithm	Manik MONDAL	Manik MONDAL	Nagaoka University of Technology Department of Civil and Environmental Engineering	Manik MONDAL; Kazushi SANO; Tepei KATO; Chonppa PUPPATERAVANIT; Tomonori YAMAZAKI; Ahmad Fattam Rahman SADULLAH; Anwar P.P. Abdul MAJEED; Ahmad Fakhri Abd. NASIR; Mohd Azraai Mohd RAZMAN; Nabir Masud MUDA
			PP3274	Activation Function Investigation by Means of Neurons Optimization for Travel Mode Choice Modelling in Kuantan City	Nur Fahriza Binti Mohd ALI	Nur FAHRIZA	Universiti Sains Malaysia	Nur Fahriza Binti Mohd ALI
			PP3286	Mode Choice Modeling in Surakarta: Opportunity of Batik Solo Trans (BST) Bus as the Primarytransport Mode	I Gusti Ayu ANDANI	I Gusti Ayu ANDANI	Bandung Institute of Technology School of Architecture Planning and Policy Development	Ardelia SAFRANISA; I Gusti Ayu ANDANI
			PP3470	Change in Travel Demand under the COVID-19 Pandemic Using Route-Search History Data	Mio HOSOE	Mio HOSOE	Tottori University: Tottori Daigaku	Mio HOSOE; Masashi KUWANO; Taku MORIYAMA
			PP3546	Transportation Mode Choices for Indonesia New Capital City	Prawira Fajarindra BELGIAWAN	Prawira Fajarindra BELGIAWAN	Bandung Institute of Technology	Prawira Fajarindra BELGIAWAN; Mohamed Yusuf Faridian WIRAYAT; Eko Agus PRASETIO
Technical Session - 2		30.10 Travel Behavior Analysis						
Session Number	Day	Time	Paper ID	Article Title	Presenter	Corresponding Author	Corresponding Author's Institution	Authors
15	Sep. 4 (Mon)	15:45 17:15	PP3575	Analyzing Impacts of COVID-19 and Its Related News on Public Transit in the Coexistence Phase – Evidence from the Taipei Metro	Tzu-Chang LEE	Chih-Chung FAN	National Cheng Kung University	Chih-Chung FAN; Tzu-Chang LEE
			PP3735	The Attitude-Behavior Gap in Green Travel Behavior: A Comprehensive Perspective Based on Color-Coded Behavior and the Moderating Influence of Motivation	Xuemei FU	Xuemei FU	Shandong University	Xuemei FU; Jingci XIE
			PP3587	Estimating Origin-Destination Trip Matrices by Travel Purposes for Ulaanbaatar (Part 2)	Ankhabayar SARUUL	Erdenechimeg ELDEV-OCHIR	Asian Infrastructure Research Institute	Erdenechimeg ELDEV-OCHIR; Ankhabayar SARUUL
			PP3467	Decision Making Strategy on Destination Choice for Overseas Travel: Differences between First-Time Visitors and Repeat Visitors	Toshiaki AOKI	Toshiaki AOKI	Tohoku University Graduate School of International Cultural Studies	Yu-Ting KO; Toshiaki AOKI
			PP3734	Analyzing Spatio-Temporal Trends of Public Bicycle Scheme Using Big-Data: A Case Study of Surat City, India	Rohit RATHOD	Sachin ELANGO	Sardar Vallabhbhai National Institute of Technology	Parth JHAVERI; Sachin ELANGOECH; Rohit RATHOD; Aninda PAUL; Gaurang JOSHI; Shrinivas
Technical Session - 3		30.10 Travel Behavior Analysis						
Session Number	Day	Time	Paper ID	Article Title	Presenter	Corresponding Author	Corresponding Author's Institution	Authors
25	Sep. 5 (Tue)	09:00 10:00	PP3552	Spatiotemporal Travel Demand from Aggregated Mobile Positioning Data in Tokyo, Japan	Toshinori ARIGA	Toshinori ARIGA	Chiba University	Toshinori ARIGA
			PP3451	Impact of Odd-Even Policy Implementation in Delhi on Mobility	Ranjana SONI	Ranjana SONI	Indian Institute of Technology Delhi	Ranjana SONI; Geetam TIWARI; Manoj MALAYATH
			PP3742	Sustainability of Electronic Three-Wheel Ride-Hailing Services: A Case Study in Bangkok, Thailand	Phat CHANTACHOT	Mihoko MATSUUYUKI	Yokohama National University	Phat CHANTACHOT; Mihoko MATSUUYUKI
			PP3547	Estimating the Delay Caused by Side Friction Near 'School Zones'	Vasantha Sk WICKRAMASINGHE	Vasantha WICKRAMASINGHE	University of Peradeniya	Vasantha WICKRAMASINGHE; Akila HEWAGE; Manjitha BALASOORIYA
Technical Session - 4		30.10 Travel Behavior Analysis						
Session Number	Day	Time	Paper ID	Article Title	Presenter	Corresponding Author	Corresponding Author's Institution	Authors
35	Sep. 5 (Tue)	11:30 13:00	PP3354	Pedestrian Facilities and Route Choice Around MRT Jakarta Setiabudi Station Using Stated Preference	Matthew Hernando WIDJAJA	Matthew Hernando WIDJAJA	Parahyanan Catholic University; Universitas Katolik Parahyanan	Matthew Hernando WIDJAJA; Tri Basuki JOEWONO; Patricia HARTIENI
			PP3479	A Pedestrian Model Capturing Trade-Offs Between Travel and Place Functions of Urban Street Space: An Illustrative Numerical Example	Keishi FUJIWARA	Makoto CHIKARAISHI	Hiroshima University	Keishi FUJIWARA; Yuki OYAMA; Makoto CHIKARAISHI; Akimasa
			PP3681	The Effects of School Zoning Policy on High School Students' Mobility: A Case Study of Cimahi City	Nuri Inda ZULFA	Yori HERWANGI	Universitas Gadjah Mada	Nuri Inda ZULFA; Yori HERWANGI
			PP3615	User-Perception Based Framework for Bicycle Level of Service Evaluation in Indian Cities – Patna as a Case Study	Manan MONGA	Manan MONGA	Indian Institute of Technology Roorkee	Manan MONGA; Shubhajat SADHUKHAN

			PP3716	A Hybrid Grey Relation-Based Importance Satisfaction Analysis for Prioritizing Pedestrian Crossing Facilities: A Case of Roorkee	Ravi KANT	Ravi KANT	Indian Institute of Technology Roorkee	Ravi KANT; Shubhaji SADHUKHAN; Ramesh ANBANANDAM
30.10 Travel Behavior Analysis								
Session Chair: T.B.D								
Session Number	Day	Time	Paper ID	Article Title	Presenter	Corresponding Author	Corresponding Author's Institution	Authors
45	Sep. 5 (Tue)	14:00 15:30	PP3718	Determining Priority Factors for Pedestrian Infrastructure Improvement Using Integrated RIDIT-ISA Technique: A Case of Roorkee	Namia ISLAM	Namia ISLAM	Indian Institute of Technology Roorkee	Namia ISLAM; Manan MONGA; Satyam CHATURVEDI; Shubhaji
			PP3642	Investigating Road User Perception on Shared Space: A Case Study of Shah Alam	Masria MUSTAFA	Masria MUSTAFA	University Teknologi Mara	Masria MUSTAFA; Yasmin Soraya MUSTAFA; Zanzariah Abd. RAHMAN; Takeru SHIBAYAMA;
			PP3478	Impact of Transit-Oriented Development of Bus Rapid Transit Station Areas on Resident's Travel Behavior in Lahore, Pakistan	Muhammad NADEEM	Muhammad NADEEM	Yokohama National University	Muhammad NADEEM; Mihoko MATSUUYUKI; Shinji TANAKA
			PP3730	Why the Ridership Is Declining: Understanding Preferences of Public Transport Users in Indonesia	Gloriani Novita CHRISTIN	Gloriani Novita CHRISTIN	Ministry of Transport Republic of Indonesia	Gloriani Novita CHRISTIN; Djamal SUBASTIAN; SUBARTO
			PP3741	Evaluation of Transit-Oriented Development (TOD) in Developing Countries Context	B Raghuram KADALI	B Raghuram KADALI	National Institute of Technology Warangal	Reddi Rani NAGATHATHAGARI; B Raghuram KADALI; S.V. Subbarao SALADI; Prashanth Shekar LOKKU
30.10 Travel Behavior Analysis								
Session Chair: T.B.D								
Session Number	Day	Time	Paper ID	Article Title	Presenter	Corresponding Author	Corresponding Author's Institution	Authors
55	Sep. 5 (Tue)	15:45 17:15	PP3679	Prioritization of Attributes Influencing the Commuters' Choice of Inland Water Transport Service	Bhargab MAITRA	Bhargab MAITRA	Indian Institute of Technology Kharagpur, India	Saptarshi SEN; Vaishnavi PIDATHALA; Bhargab MAITRA
			PP3373	Evaluation of Passenger Satisfaction Level for Enhancing Bus-Based Public Transport System - A Case Study in Kandy, Sri Lanka	Dhanushka HEARTH	Dhanushka Madusanka HEARTH	University of Peradeniya	Dhanushka Madusanka HEARTH; Vasantha WICKRAMASINGHE; W.R.S.S. DHARMARATNE; A.G.H.J. EDIRISINGHE
			PP3740	Analysis of a Students' Travel Mode Choice Behavior: A Case Study in Oman	Muhammad Ashraf JAVID	Muhammad Ashraf JAVID	Capital University of Science and Technology	Muhammad Ashraf JAVID; Ghadeer Hamed AL-KASBI; Noman ALI
			PP3744	Investigating Transit Accessibility Through the Perspective of Users' Socio-Economic and Trip Characteristics: A Focused Questionnaire Based Approach.	Rohit RATHOD	Rohit RATHOD	Sardar Vallabhbhai National Institute of Technology	Rohit RATHOD; Gaurang JOSHI; Shrinivas ARKATKAR; Aninda PAUL
			PP3645	Modal Shift Analysis of Malaysian E-Hailing Users' Preferences in Travelling	Mohd Hanifi Bin OTHMAN	Mohd Hanifi OTHMAN	Universiti Tun Hussein Onn Malaysia	ARBAAN; Ahmad Raqib Ab GHANI; Kamarudin AMBAK; Muhamad Nazri BORHAN; Nur Sabahiah Abdul
30.10 Travel Behavior Analysis								
Session Chair: T.B.D								
Session Number	Day	Time	Paper ID	Article Title	Presenter	Corresponding Author	Corresponding Author's Institution	Authors
65	Sep. 5 (Tue)	17:00-18:30	PP3406	Analyzing Prospective Users' Willingness to Pay for Electric Two-Wheeler Infrastructure Attributes in Indian Context	Bandhanu MAJUMDAR	Bandhanu MAJUMDAR	National Institute of Technology Durgapur	Bandhanu MAJUMDAR; Mallikarjun PATIL; Prasanta SAHU; Naveed F MARAZI; Bhavani Shankar BALLA; Gourab SIL
			PP3630	Impact of Providing Information about Highways During Winter Season on Behavior Choices of Trucking Companies	Takumi TAKAKURA	Takumi TAKAKURA	Nee Ltd.	Takumi TAKAKURA; Kazuma MIYOSHI; Kazushi SANO; Teppei
			PP3308	The Effect of Online and Social Media Change on Affective Well-Being in Different Stages of COVID-19 Pandemic in Indonesia and	Tri Basuki JOEWONO	Ariel MATTHEW	Parahyangan Catholic University; Universitas Katolik Parahyangan	Ariel MATTHEW; Tri Basuki JOEWONO; Dimas Bayu Endrayana
			PP3299	Valuations of Interchange and Crowding Influencing Transit Users' Route Choice in Bangkok	Sitha JAENSIRISAK	Sitha JAENSIRISAK	Ubon Ratchathani University	Sitha JAENSIRISAK; Somporn PAKSARSAWAN
			PP3442	Analysis of Commuters' Transport Mode Choice During the COVID-19 Pandemic: the Case of Siniloan, Laguna, Philippines	Ma Bernadeth LIM	Ma Bernadeth Borleo LIM	University of The Philippines Los Banos	Ma Lynette ALCANTARA; Ma Bernadeth Borleo LIM; Harvey MAUNAHAN; Mark Joel UAJE
90.10: Modeling of Vehicle Maneuvers and Drivers								
Session Chair: T.B.D								
Session Number	Day	Time	Paper ID	Article Title	Presenter	Corresponding Author	Corresponding Author's Institution	Authors
75	Sep.6 (Wed)	09:00 10:00	PP3542	Traffic Performance Influenced by Motorbikes and Autorickshaws under Heterogeneous Traffic Using UAVs	Tetsuhiro ISHIZAKA	Tetsuhiro ISHIZAKA	Nihon University	Tetsuhiro ISHIZAKA; Kazu FUJIEDA; Asif Mohammed NAWAZ; Digvijay
			PP3592	Review of Research on Congested and Uncongested Traffic States: A Systematic Review	Usman Shehu RABIU	Usman Shehu RABIU	Nigerian Institute of Transport Technology Department of Research and Consultancy	Usman Shehu RABIU; Siti HASSAN; Nordiana MASHROS
			PP3577	Effectiveness of Accident Risk Information Based on Information Types	Takahiro Tsubota	Takahiro Tsubota	Ehime University	Takahiro Tsubota; Toshio YOSHII; Shinya KURAUCHI; Jian XING
			PP3623	Estimation of Safe Speed Limit along Urban Roads of Developing Countries: A Simplified Approach	Saptarshi SEN	Saptarshi SEN	Indian Institute of Technology Kharagpur	Sankhadeep PRAMANIK; Saptarshi SEN; Sandip CHAKRABORTY; Sudip Kumar ROY
30.10 Travel Behavior Analysis								
Session Chair: T.B.D								
Session Number	Day	Time	Paper ID	Article Title	Presenter	Corresponding Author	Corresponding Author's Institution	Authors
85	Sep.6 (Wed)	11:30 13:00	PP3277	Understanding En-Route Decisions: An Investigation of Motorcycle Riders' Route Switching Propensity	Siti Raudhatul FADILAH	Siti Raudhatul FADILAH	Kochi Koka Daigaku	Siti Raudhatul FADILAH; Hiroaki NISHIUCHI; An Minh NGOC
			PP3418	Passenger Satisfaction in Long Route Buses: Case Study of Nepal	Niroj GAUTAM	Niroj GAUTAM	Nepal Engineering College	Niroj GAUTAM; Krishna Chandra
			PP3272	An Evaluation of the Effectiveness of the Travel Restriction Policy During the COVID-19 Pandemic to Control the Numbers of Daily Rail Passengers in the Bangkok Metropolitan Region	Jehan CHUDUANG	Tithiwach TANSAWAT	Almec Corporation	Jehan CHUDUANG; Tithiwach TANSAWAT; Motoko KANEKO; Tetsuya MASUJIMA
			PP3764	Investigating Preferences of Commuters' Modal Change When Introducing Light Rail Transit: A Case in Utsunomiya City, Japan	Nobuaki OHMORI	Nobuaki OHMORI	Utsunomiya University	Nobuaki OHMORI; Sadayasu AONO
			PP3782	Origin-Destination Trips by Purpose and Time of Day from Mobile CDR: A Case of Yangon City	Win War HLAING	Win War HLAING	Yangon Technological University	Win War HLAING; KYAING; Rubel DAS
30.10 Travel Behavior Analysis								
Session Chair: T.B.D								
Session Number	Day	Time	Paper ID	Article Title	Presenter	Corresponding Author	Corresponding Author's Institution	Authors
95	Sep.6 (Wed)	14:00 15:30	PP3709	Commuters' Preference Heterogeneity in Perceived Importance towards Attributes of Regional Transit Systems: An Experience of National Capital Region, India	Aditya Manish PITALE	Aditya Manish PITALE	Indian Institute of Technology Roorkee	Aditya Manish PITALE; Shubhaji SADHUKHAN; Manoranjan PARIDA
			PP3414	A Preference Study of the Middle-Aged and Elderly Using Mobile Payment on Shared Autonomous Vehicles	Tsai-Yun LIAO	Tsai-Yun LIAO	National Chiayi University	Tsai-Yun LIAO; Yi-Zhou CHEN; Ta-Yin HU
			PP3512	The Influence of Walking Attitudes and Walking Environment on Private Vehicle Dependent Travel Behaviour in Asian Developing	Takayoshi FUTOSE	Takayoshi FUTOSE	Almec Corporation	Takayoshi FUTOSE; Toshiyuki OKAMURA
			PP3474	Development of Trip Generation Model for Shared E-Scooter by Level of City Population Density	Kyuhyuk KIM	Tajjin SONG	Chungbuk Daehakgyo	Kyuhyuk KIM; Tajjin SONG
			PP3664	Trip Demand Prediction for Electric Scooter Sharing in Taiwan Using Spatial-Temporal Graph Neural Networks	I-Yun Lisa HSIEH	I-Yun Lisa HSIEH	National Taiwan University	Jia-Cheng SONG; I-Yun Lisa HSIEH; Chuin-Shan CHEN
120.10: Emerging Technology (C-ITS/Autonomous IoT)								
Session Chair: T.B.D								
Session Number	Day	Time	Paper ID	Article Title	Presenter	Corresponding Author	Corresponding Author's Institution	Authors
50	Sep.6 (Wed)	15:45 17:15	PP3749	Impacts of Shared Autonomous Vehicles Connecting with Mass Rapid Transit Systems on Travel Behavior: A Comparison of Virtual and Real Experiences, Before and After AV Rides	Van Son PHAM	Van Son PHAM	Hiroshima University	Van Son PHAM; Akimasa FUJIWARA; Makoto CHIKARAISHI; Nangung HAEWON; Thi Anh Hong NGUYEN; Anh Son LE
			PP3449	Deep Learning Approaches for Damage Detection - A Review	Dung Ngoc BUI	Dung Ngoc BUI	University of Transport and Communications	Ngoc Lan NGUYEN; Ngoc Dung Ngoc BUI; Tien Thanh BUI; Ngoc Hoa TRAN; Tran Hieu NGUYEN
			PP3762	Traffic Operation Strategy for the Mixed Autonomous Vehicles Traffic Flow	Donghyun LIM	Hyungjoo KIM	Advanced Institutes of Convergence Technology	Donghyun LIM; Woosuk KIM; Hyungjoo KIM
			PP3759	Estimation of Spatiotemporal Traffic Information Based on Automated Sensors	Woosuk KIM	Hyungjoo KIM	Advanced Institutes of Convergence Technology	Woosuk KIM; Jongho KIM; Joonhyung MOON; Hyungjoo KIM
			PP3833	Analysis on Impact of COVID19 on Travel Demand Pattern in Kuala Lumpur Using OD Estimation from Mobile Data	Gan Jia JUN	May Yen CHU	Heriot-Watt University Malaysia	Kar Keong CHIN; Jia Jun GAN; May Yen CHU
Room F-Seminar RoomS (S5)								
30.20: Travel Demand Modeling and Forecasting								
Session Chair: T.B.D								
Session Number	Day	Time	Paper ID	Article Title	Presenter	Corresponding Author	Corresponding Author's Institution	Authors
6	Sep. 4 (Mon)	14:00 15:30	PP3345	A Recursive Logit Model with Non-Link-Additive Attributes in a Multimodal Network	Sedong MOON	Dong-Kyu KIM	Seoul National University	Sedong MOON; Dong-Kyu KIM
			PP3625	Development of Trip Generation Model of Bhopal: A Comparative Study of Traditional Multilinear Regression and Machine Learning	Pritikana DAS	Saumya ANAND	Manit: Maulana Azad National Institute of Technology	Saumya ANAND; Pritikana DAS; G R BIVINA
			PP3751	Estimating Origin-Destination Trip Matrices by Mode Choice for Ulaanbaatar (Part 1)	Erdenechimeg ELDEV-OCHIR	Erdenechimeg ELDEV-OCHIR	Asian Infrastructure Research Institute	Erdenechimeg ELDEV-OCHIR; Ankhyayar SARUUL
			PP3332	Effects of the Traffic System Management of the Tokyo 2020 Olympic Games on the Tokyo Metropolitan Expressways	Zeren XING	Zeren XING	University of Tokyo Graduate School of Engineering School of	Zeren XING; Takashi OGUCHI
			PP3524	Development of Trip Generation Model for Shared E-Scooter by Level of Trip Density	Kyuhyuk KIM	Kyuhyuk KIM	Chungbuk National University College of Engineering	Kyuhyuk KIM; Tajjin SONG
30.20: Travel Demand Modeling and Forecasting								

Session - 2				Session Chair: T.B.D				
Session Number	Day	Time	Paper ID	Article Title	Presenter	Corresponding Author	Corresponding Author's Institution	Authors
16	Sep. 4 (Mon)	15:45 17:15	PP3680	Exploring the Needs and Satisfaction of Road-Based Public Transport Users in the Philippines: An Examination of Passengers with Reduced Mobility	Sandy Mae GASPAY	Sandy Mae GASPAY	University of the Philippines Diliman	Sandy Mae GASPAY; Walleastein SIGUI; Maria Sheilah NAPALANG; Billie ARANZANSO
			PP3807	The Study of Light Rail Transit (LRT) Station Accessibility's Mode Choice	Pawitchaya PHUENGGHOKSUNG	Pawitchaya PHUENGGHOKSUNG	Mahidul University Faculty of Engineering	Pawitchaya PHUENGGHOKSUNG; Siradol SIRIDHARA; Som Siri SIEWWUTTANAGUL
			PP3506	The Effect of Passenger Decisions on Vehicle Based Deficit Mediated by Perceived Usefulness Using Structural Equation Model (Case Study: Paratransit Transport as LRT Feeder in Medan City)	Irwan Suranta SEMBIRING	Irwan Suranta SEMBIRING	University of Sumatera Utara Faculty of Engineering	Irwan Suranta SEMBIRING; Nur Sabahiah Abdul SUKOR
			PP3704	Analyzing Demand Reduction and Recovery of Major Rail Stations in Japan During COVID-19 Using Mobile Spatial Statistics	Jiannan DAI	Jiannan DAI	Kyoto University	Jiannan DAI; Jan-Dirk SCHMÖCKER; Wenzhe SUN
			PP3409	Combination of Advanced Booking Models for Short-Term Railway Passenger Demand Forecasting	Tsung-Hsien TSAI	Tsung-Hsien TSAI	National Quemoy University	Tsung-Hsien TSAI
Technical Session - 3				90.10: Modeling of Vehicle Maneuvers and Drivers				
				Session Chair: T.B.D				
26	Sep. 5 (Tue)	09:00 10:00	PP3496	A Study on Driver's Behaviour at Unsignalized Intersections under Mixed Traffic Scenario	Dr. Arpita SAHA	Arpita SAHA	Visvesvaraya National Institute of Technology	Arpita SAHA; Pratik DESHMUKH; Chinmay DESHPANDE
			PP3363	Improving Throughput Using Traffic Signalization Based on Critical Queuing and Addition of Superstreets	Jaymar SORIANO	Jaymar SORIANO	University of the Philippines Diliman	Jaymar SORIANO; Adrian Roy VALDEZ; Arvin John TOMACRUZ; Joe-Mar CHAVEZ; Paolo
			PP3459	Traffic Flow Optimization and Management of Shaw Boulevard Using VISSIM	John Bazille BASINAL	John Bazille BASINAL	Mapua University	John Bazille BASINAL; Juan Miguel BANZON; Trisha LAO
			PP3306	Adaptive Signal Controller Based on Convolution Neural Network Agent for Heterogeneous Traffic Environment: A Case Study in	Muaid Abdulkareem	Muaid AHMED	Universiti Tunku Abdul Rahman	Muaid AHMED; Hooi Ling KHOO; Oon-Eng NG
Technical Session - 4				90.10: Modeling of Vehicle Maneuvers and Drivers				
				Session Chair: T.B.D				
36	Sep. 5 (Tue)	11:30 13:00	PP3453	Study on Gap Acceptance Behavior of Vehicles at Roundabout	Shafida Azwina Mohd SHAFIE	Lee Vien LEONG	Universiti Sains Malaysia	Shafida Azwina Mohd SHAFIE; Lee Vien LEONG; Wei Ai CHIN
			PP3426	A Comparison Study of Vehicle Delay Models at Signalized Mid-Block Crosswalks Under Heterogeneous Traffic Conditions	Sandeep MANTHIRIKUL	Sandeep MANTHIRIKUL	Visvesvaraya National Institute of Technology	Sandeep MANTHIRIKUL; Udit JAIN
			PP3360	Calibration and Validation of the Rule-Based Human Driver Model for Roundabout Car-Following Behaviors Using Naturalistic Driving	Junhee CHOI	Dong-Kyu KIM	Seoul National University	Junhee CHOI; Dong-Kyu KIM
			PP3520	Effects of Time-Gap Settings of Adaptive Cruise Control on Driver's Risk Feeling on Snowy Roads	Sho TAKAHASHI	Sho TAKAHASHI	Hokkaido University	Sho TAKAHASHI; Toru HAGIWARA
			PP3304	Research on Factors Influencing Traffic Capacity During Lane Closures on Inter-Urban Expressways	Mitsuaki SAKURAI	Mitsuaki SAKURAI	Central Nippon Highway Engineering Tokyo Co., Ltd.	Mitsuaki SAKURAI; Hiroyuki ONEYAMA; Junya UEHATA; Takashi
Technical Session - 5				90.20: Traffic Flow Analysis				
				Session Chair: T.B.D				
46	Sep. 5 (Tue)	14:00 15:30	PP3598	Empirical Proof of the Characteristics of the Queue Discharge Rate Under Different Rainfall Conditions on an Active On-Ramp	Hanzel N. MEJIA	Hanzel Naval MEJIA	Visayas State University	Hanzel Naval MEJIA
			PP3407	Road Traffic Breakdown: A Bibliometric Analysis and Review	Usman Shehu RABIU	Usman Shehu RABIU	Nigerian Institute of Transport Technology Department of Research and Consultancy	Usman Shehu RABIU; Siti HASSAN; Nordiana MASHROS
			PP3295	Access Management at Public Transport Stations	Nor Azmirahani Binti Mhd YUNIN	Nor Azmirahani Mhd YUNIN	Institut Penyelidikan Keselamatan Jalan Raya Malaysia	Nor Azmirahani Binti Mhd YUNIN; Mohamed JAMIL; Jen Sim HO; Nora Sheda Mohd ZULKIFFLI; Norfaizah Mohamad KHAIDIR; Rizati
			PP3727	Investigation of Lane Changing Phenomena at Large Multilane Roundabout	Elizabeth Eu Mee CHONG	Elizabeth Eu Mee CHONG	Swinburne University of Technology - Sarawak Campus	Elizabeth Eu Mee CHONG; Chia Hui WEE; Lin Thiing SIM; Ji Boon BONG
			PP3722	Deploying UAV for Smart Monitoring of Traffic	Sunitha V	Manjusha M	National Institute of Technology Tiruchirappalli	Manjusha M; Manjusha M; Niveditha R; Sunitha V
Technical Session - 6				90.60: Traffic Simulation System and Analysis				
				Session Chair: T.B.D				
56	Sep. 5 (Tue)	15:45 17:15	PP3523	Effect of Motorcycle Proportion on Accident Risk in Mixed Traffic	Rizky Adelin JUNIRMAN	Rizky Adelin JUNIRMAN	Tokyo Metropolitan University	Rizky Adelin JUNIRMAN, SC; Hiroyuki ONEYAMA
			PP3766	Driving Simulator for Non-Lane-Based Heterogenous Traffic: A Co-Simulation of Driving and Traffic Simulator	Purvang Mukeshbhai CHAUDHARI	Purvang CHAUDHAR	Indian Institute of Technology Bombay	Purvang Mukeshbhai CHAUDHARI; SEBASTIAN; Janani LEKSHMIPATHY; Remya PADINJARAPAT; Perumal
			PP3264	Rumble Strip and Its Impact on Vehicle Speed, Emissions and Fuel Consumption	Masria MUSTAFA	Masria MUSTAFA	University Teknologi Mara	Masria MUSTAFA; Shahfian Hakim ZAINAL; Sorawit NARUPITI
			PP3356	Developing Lane-Changing Strategy of Autonomous Vehicles Based on Deep Reinforcement Learning Using Long-Range Information for Mitigating Traffic Congestion	Donggyu MIN	Dong-Kyu KIM	Seoul National University	Donggyu MIN; Hyunsoo YUN; Dong-Kyu KIM
			Technical Session - 7				90.60: Traffic Simulation System and Analysis	
				Session Chair: T.B.D				
66	Sep. 5 (Tue)	17:00-18:30	PP3763	Microscopic Traffic Simulation Framework for Parking Violations on Bus Priority Lanes Using SUMO	Thenuwan JAYASINGHE	Thenuwan Thiranjaya JAYASINGHE	University of Moratuwa	Thenuwan Thiranjaya JAYASINGHE; Gayasha Satharani SAMARAKOON; Thillaiampalam SIVAKUMAR
			PP3613	A Comparison of Microscopic Traffic Simulation Systems for Powered-Two-Wheeler Traffic	K.I. WONG	Ka lo WONG	National Yang Ming Chiao Tung University	P.K. KUO; J.D. CHEN; Ka lo WONG
			PP3434	Development of Reinforcement-Learning-Based Variable Speed Limit Using Microscopic Traffic Flow Simulation on Freeways	So FUJIMOTO	So FUJIMOTO	Ritsumeikan University	So FUJIMOTO; Yasuhiro SHIOMI; Hisamoto HANABUSA
			PP3440	Strategic Control for Autonomous Car on Freeway Merging Sections	Yugo SHINOHARA	Yugo SHINOHARA	Ritsumeikan University	Yugo SHINOHARA; Yasuhiro SHIOMI; Hisamoto HANABUSA
			PP3795	Combining Multivariate LSTM and Gaussian Process Regression OD Traffic Generation by Time of Day	Shotarou YAMASHITA	Shotarou YAMASHITA	Tokyo University of Science	Shotarou YAMASHITA; Hideki YAGINUMA; Shintarou TERABE; Haruka UNO; Yu SUZUKI;
Technical Session - 8				90.80: ITS				
				Session Chair: T.B.D				
76	Sep. 6 (Wed)	09:00 10:00	PP3263	The Application of Mobile GPS Probe Data on Detection of Real-Time Traffic Congestion Length: The Case Study of the Project for Improving Traffic Congestions in Bangkok through the Establishment of ATC System	Tithiwach TANSAWAT	Tithiwach TANSAWAT	Almec Corporation	Tithiwach TANSAWAT; Sarawat JANSUWAN; Joroen BROUWER; Seiya MATSUKA; Ken NISHINO; Tetsuji MASUJIMA
			PP3412	Vehicles Speed Detection Using Deep Learning Approach	Dung Ngoc BUI	Dung Ngoc BUI	University of Transport and Communications	Dung Ngoc BUI; Tien Thanh BUI; Ngoc Lan NGUYEN; Ngoc Hoa TRAN; Tran Hieu NGUYEN
			PP3292	Analysis of Vehicle Detection System and Traffic Data Collection Trend: The Cases of Korea and Several Foreign Countries	Yejin KIM	Yejin KIM	Ajou University	Yejin KIM; Jihyung PARK; Hwanpil LEE; Youngtaek LEE; Hansol JEONG; Ilsoo YOON
			PP3808	Intelligent Transport System: A Progressive Review	Arjun Singh LODHI	Arjun Singh LODHI	Maulana Azad National Institute of Technology	Arjun Singh LODHI; Anuj JAISWAL; Shashikant Nishant SHARMA
Technical Session - 9				80.20: Pavements				
				Session Chair: T.B.D				
86	Sep. 6 (Wed)	11:30 13:00	PP3513	Development of Rutting Performance Model for Recycled Hot Mix Asphalt with Bioasphalt Using Hamburg Wheel Tracking Device	Bambang S SUBAGIO	Bambang Sugeng Sugeng SUBAGIO	Institut Teknologi Bandung	Bambang Sugeng SUBAGIO; Ivan IMANUEL; Atmy Verani Rouly SIHOMBING
			PP3310	Implementing Fatigue Index Into Evaluating the Fatigue Characteristics of Asphalt Concrete: Case of Changing Air Void	Ngoc-Duy DO	Ngoc-Duy DO	National Taiwan University of Science and Technology	Ngoc-Duy DO; Min-Chih LIAO
			PP3311	Nano-Al2O3 and Crumb Rubber Hybrid Asphalt Modification	Yibas Mamuye TAFES	Yibas Mamuye TAFES	Ntust: National Taiwan University of Science and Technology	Yibas Mamuye TAFES; Min-Chih LIAO
			PP3425	Assessing Rheological and Thermal Properties of Bitumen with Graphene Nanoparticles	Pratik JAISWAL	Pratik JAISWAL	Iit Bhubaneswar; Indian Institute of Technology Bhubaneswar	Pratik JAISWAL; Anush K. CHANDRAPPA; Umesh C. SAHOO; Rakesh NANDAN
			PP3604	Fatigue Performance Analysis of Asphalt Binders and Mixtures	Min-Chih LIAO	Min-Chih LIAO	National Taiwan University of Science and Technology	Min-Chih LIAO; Chi-Lung LU
Technical Session - 10				80.20: Pavements				
				Session Chair: T.B.D				
		14:00	PP3307	Deep Learning Based Pavement Road Crack Detection	Dung Ngoc BUI	Dung Ngoc BUI	University of Transport and Communications	Le NGUYEN; Dung Ngoc BUI; Asirvatham DAVID
			PP3694	Long-Term Performance of Recycled Waste Plastics Modified Asphalt Concrete	Ghim Ping ONG	Ghim Ping ONG	National University of Singapore	Sin Mei LIM; Gengren HAO; Guan Long TAN; Ghim Ping ONG

96	Sep.6 (Wed)	15:30	PP3508	Evaluation of Deflection Data to Monitor the Structural Performance of Composite Pavements	Jian-Shiuh CHEN	Jian-Shiuh CHEN	National Cheng Kung University	Jian-Shiuh CHEN; Chin Hung YANG
			PP3618	Measurement of Temperature from an Instrumented Concrete Overlay and Investigating the Effect of Temperature Gradient on Its	Swati MAITRA	Swati MAITRA	Indian Institute of Technology Kharagpur	Dhritree Diksha BAROOWA; Swati MAITRA
			PP3446	An Investigation into the Effect of Geopolymer Modification on the Consistency of Crumbed Rubber Modified Bitumen	Rekha K NAIR	Rekha K NAIR	National Institute of Technology Tiruchirappalli	Rekha K NAIR.; Rekha NAIR; G. Sai Srikr REDDY; Sunitha V
100.40: Evaluation on Safety Measures								
Technical Session - 11								
Session Chair: T.B.D								
Session Number	Day	Time	Paper ID	Article Title	Presenter	Corresponding Author	Corresponding Author's Institution	Authors
60	Sep.6 (Wed)	15:45 17:15	PP3287	Research and Development to Improving Deformation Performance of Wire Rope Barriers	Masayuki HIRASAWA	Masayuki HIRASAWA	Civil Engineering Research Institute for Cold Region	Masayuki HIRASAWA; Yasuhiko ITO; Keita YAMADA
			PP3289	Effect of Vehicle Type on Stopping Sight Distance at Vertical Summit Curves in Heterogeneous Traffic Conditions	Ravi Shankar KVR	Ravi Shankar KVR	National Institute of Technology Warangal	Ravi Shankar KVR; Sushmitha RAMIREDDY
			PP3397	Investigating Influential Factors on Drop-Off Location Choices for School Bus Services from Parents' Perspective: A Case Study in Hanoi, Vietnam	Hung N.V DO	Hung N.V. DO	Hiroshima University Graduate School of Advanced Science and Engineering	Hung Nguyen Viet DO; Akimasa FUJIWARA; Thi Anh Hong NGUYEN; Canh DO
			PP3291	A Study on the Establishment of Electric Vehicle Fire Response Guidelines in Tunnel	Donghyo KANG	donghyo KANG	Ajou University	Donghyo KANG.; Yoseph LEE; Kyeongjin LEE; Harim JUNG; Ilsoo
Room G-Seminar Room6 (S6)								
50.10: Urban and Regional Planning								
Technical Session - 1								
Session Chair: T.B.D								
Session Number	Day	Time	Paper ID	Article Title	Presenter	Corresponding Author	Corresponding Author's Institution	Authors
7	Sep. 4 (Mon)	14:00 15:30	PP3521	How a Pandemic Reshaped the Travel Behavior of Daily Commuters in Dhaka City: a Comparative Analysis on Public Bus and Motorbike Users during COVID-19	Farzana RAHMAN	Farzana RAHMAN	United International University	Farzana RAHMAN; Farabi Islam PANTHA; Mehedi Hasan M. ZAHID; Muraduzzaman MASUM
			PP3682	The Impact of Bus Fare Policies on Healthy Life Expectancy in Core Cities in Japan	Yu SUZUKI	Yu SUZUKI	Tokyo University of Science	Yu SUZUKI; Motohiro YAMAZAKI; Xueqing BO
			PP3695	Factors Affecting the Sustainability of Transportation Passenger Services with Private Autos (Paratransit) in Japan	Ryusuke TAKEUCHI	Ryusuke TAKEUCHI	Jrsai	Ryusuke TAKEUCHI; Hiroto INOI; Itsuki YOSHIDA
			PP3636	Applying Tree-Based Ensembles and Shapley Additive Explanations to Study the Factors Impacting Pedestrian Walking Speed over	Akhilesh Kumar MAURYA	Arunabha BANERJEE	Western Kentucky University	Arunabha BANERJEE; Rahul RAONIAR; Akhilesh Kumar MAURYA
			PP3675	The Impact of Waiting and Resting Space Improvements at a Regional Railway Station on Users' Attitude and Behavior	Seiya YAMAJI	Seiya YAMAJI	Osaka University; Osaka Daigaku	Seiya YAMAJI; Chun-Chen CHOU; Kenji DOI; Kento YOH; Yasuhika
50.10: Urban and Regional Planning								
Technical Session - 2								
Session Chair: T.B.D								
Session Number	Day	Time	Paper ID	Article Title	Presenter	Corresponding Author	Corresponding Author's Institution	Authors
17	Sep. 4 (Mon)	15:45 17:15	PP3337	Exploring the Effects of Place Memory on the Willingness to Stay in the Current Neighborhood	Ziying LI	Ziying LI	Tohoku University	Ziying LI; Siyi AN; Toshiaki AOKI
			PP3678	The Impact of Jakarta-Bandung High-Speed Train Projects on the Land Price Changes	Maya SAFIRA	Maya SAFIRA	Hiroshima University; Hiroshima Daigaku	Maya SAFIRA; Ifaty Maulidina PUTRI; Haryo WINARSO
			PP3820	The Median Bus Lane Is a Successful Example of Urban Regeneration for Accelerating Sustainable Mobility in Seoul	Reazul AHSAN	Reazul AHSAN	University of Utah	Reazul AHSAN
			PP3783	Evaluating the Impacts of Tourists on the Island Environments Based on Their Stay Time	Atsushi UECHI	Daisuke KAMIYA	Kyoto University	Atsushi UECHI; Daisuke KAMIYA; Ryo YAMANAKA; Daisuke FUKUDA; Yoshiki SUGA
50.10: Urban and Regional Planning								
Technical Session - 3								
Session Chair: T.B.D								
Session Number	Day	Time	Paper ID	Article Title	Presenter	Corresponding Author	Corresponding Author's Institution	Authors
27	Sep. 5 (Tue)	09:00 10:00	PP3595	Profiling of Smart City Projects in the Philippines in Support of Sustainable Cities and Communities	Rafael April S. RIVERA	Rafael April San Juan RIVERA	Transportation Science Society of the Philippines	Enrico BASILIO; Rafael April San Juan RIVERA
			PP3586	Can People's Lifestyle Change Maintain Urban Functions in Shrinking Cities? Simulation Analysis Using Dynamic Model	Hiroki KIKUCHI	Hiroki KIKUCHI	Nihon University	Hiroki KIKUCHI.; Atsushi FUKUDA; Guenter EMBERGER
			PP3316	A Study on the Realities and Issues of Smart City in Vietnam -Case Study of Smart City Strategy in Da Nang City	Tetsuro SAISHO	Tetsuro SAISHO	Kokushikan University	Tetsuro SAISHO
			PP3570	The Impact of Transit-Oriented Development on Green Transport Systems: A Meta-Analysis	Maggie Y.J. CHEN	Barbara T.H. YEN	National Yang Ming Chiao Tung University	Barbara T.H. YEN; Maggie Y.J. CEN; Yu-Chiun CHIOU
50.40: Tourism and Leisure Activities								
Technical Session - 4								
Session Chair: T.B.D								
Session Number	Day	Time	Paper ID	Article Title	Presenter	Corresponding Author	Corresponding Author's Institution	Authors
37	Sep. 5 (Tue)	11:30 13:00	PP3486	Evaluation of Public Transportation Network for Excursion Tourism in Eastern Hokkaido	Nobuhiro SATO	Nobuhiro SATO	Hokkaido University; Hokkaido Daigaku	Nobuhiro SATO; Kunhiro KISHI; Shin-Ei TAKANO
			PP3315	Transportation Mode Choice Models for Domestic Tourists in Bali	Dewa Made Priyantha WEDAGAMA	Dewa Made Priyantha WEDAGAMA	Udayana University	Dewa Made Priyantha WEDAGAMA; Nur Zaimah Binti UBADILLAH; Dilum DISSANAYAKE
			PP3465	An Artificial Neural Network-Based Cellular Automata Model to Investigate the Effects of the Tourism Industry on Land Use Land	Anh Phuong NGUYEN	Anh Phuong NGUYEN	National Cheng Kung University	Anh Phuong NGUYEN; Tzu-Chang LEE; Hsun-Ping SHIEH
			PP3654	Study on the Opportunities of Developing Virtual Tourism	Amartuvshin LKHAGVASUREN	Amartuvshin LKHAGVASUREN	Mongolian University of Science and Technology	Amartuvshin LKHAGVASUREN
			PP3537	Constructing an Interactive Platform for the Local Practice of Gastronomy Tourism	Hiroyuki NAKANO	Hiroyuki NAKANO	Kyoto Sangyo University	Hiroyuki NAKANO; Hiroko TAKANASHI
50.30: Landscape and Urban Design								
Technical Session - 5								
Session Chair: T.B.D								
Session Number	Day	Time	Paper ID	Article Title	Presenter	Corresponding Author	Corresponding Author's Institution	Authors
47	Sep. 5 (Tue)	14:00 15:30	PP3662	Exploring Cyclists' Perception of Cycling Environments: How about Building Cyclist-Friendly Shared Space over Narrow Streets	Yu-Ting HSU	Yu-Ting HSU	National Taiwan University	Wei-Hsun CHEN; Yu-Ting HSU
			PP3492	Planning Healthy and Efficient Cities through the Healthy Urban Community Assessment Index	Angelo Paulo MOGULL	Angelo Paulo Abella MOGULL	Bulacan State University	Angelo Paulo Abella MOGULLA
			PP3596	Shared Space Street - Conceptual Design for Urban Campus in Promoting Neighbourhood and Pedestrian Activities - A Case Study of Universiti Tunku Abdul Rahman, Sungai Long Campus in Kajang.	Jun Jie TAI	Hooi Ling KHOO	Universiti Tunku Abdul Rahman	Hooi Ling KHOO; Huay Tin QUAKE; Hsiao Seak TANG; Ngie Woon NGU; Jun Jie TAI; Yu Qian LIEW
			PP3535	Assessment of Walkability in Kuala Lumpur and Petaling Jaya's Commercial Center	Chia Loke LEE	Chia Loke LEE	Universiti Malaya	Chia Loke LEE; Bor Tsong TEH; Noor Hashimah Hashim LIM; Nik Hazwani Nik HASHIM; Chia Loke LEE; Rama SUPRAMANIAN
50.50: Others								
Technical Session - 6								
Session Chair: T.B.D								
Session Number	Day	Time	Paper ID	Article Title	Presenter	Corresponding Author	Corresponding Author's Institution	Authors
57	Sep. 5 (Tue)	15:45 17:15	PP3489	Functions of Community Bases That Promote Going-Out in Depopulated Areas of Hokkaido	Hiroko UENO	Hiroko UENO	Hokkaido University	Hiroko UENO; Kunhiro KISHI; Shin-Ei TAKANO
			PP3591	Triumph Over Traffic: A Sustainability Assessment of the Motorcycle Taxi (Mc Taxi) Operation against Existing Taxi Services in Manila Using Fuzzy Evaluation for Life Cycle Integrated	Anne Nicole R. Dela CENA	Kiomit Manny Gimang BULORON	Mapua University School of Civil Environmental and Geological Engineering	Anne Nicole Rabalo Dela CENA; Kiomit Manny BULORON
			PP3815	Analysing the Effects of Road Humps on Vehicle Speed from Field Measurement and Residents' Perceptions	Abdul Azeez Kadar HAMSA	Abdul Azeez Kadar HAMSA	International Islamic University Malaysia	Siti Syazwani Ahmad SOFI; Abdul Azeez Kadar HAMSA; Khairun Sarah Radhiah BACHOK
			PP3491	Survey on Roadside Station Services for Route Ulaanbaatar-Altanbulag	Chuluuntsetseg LKHAGVASUREN	Chuluuntsetseg LKHAGVASUREN	School of Mechanics and Transportation, Mongolian University of Science and	Chuluuntsetseg LKHAGVASUREN
70.30: Bus and BRT (Bus Rapid Transit)								
Technical Session - 7								
Session Chair: T.B.D								
Session Number	Day	Time	Paper ID	Article Title	Presenter	Corresponding Author	Corresponding Author's Institution	Authors
67	Sep. 5 (Tue)	17:00-18:30	PP3612	Factors Affecting Behavioral Intention toward Public Transport Focusing on Walking Environment and Preference: A Case of Phnom	Toshiyuki OKAMURA	Toshiyuki OKAMURA	Toyo University Faculty of Global and Regional Studies	Toshiyuki OKAMURA; Channarith RO
			PP3288	Efficiency Assessment of Jakarta Bus Rapid Transit Operation	Sutanto SOEHODHO	Sutanto SOEHODHO	University of Indonesia; Universitas Indonesia	Sutanto SOEHODHO
			PP3408	Transjakarta Bus Performance Index	Sigit Wahyu PRASETYA	Sigit Wahyu PRASETYA	Bina Nusantara University	Sigit Wahyu PRASETYA; Sasmoko SASMOKO
			PP3413	Assessing Public Bus Passenger Satisfaction in Klang Valley: Confirmatory Factor Analysis	Ranjetha KARUNAKARAN	Ranjetha KARUNAKARAN	Universiti Malaya Faculty of Engineering	Ranjetha KARUNAKARAN; Joon Huang CHUAH; Rosliawati ZAINOL; Yuen Choon WAH
			PP3707	Operational Analysis of Tricycles-For-Hire Services in Puerto Princesa City, Philippines Through Exploratory Data Analysis with Household Profiling and Tricycle Internet of Things (IoT) Data	Niki Jon Y. TOLENTINO	Niki Jon Yabes TOLENTINO	University of The Philippines Diliman	Niki Jon Yabes TOLENTINO; Noriel Christopher TIGLAO; Anne Clarice NG; Erris SANCIANGCO
110.10: Air/Water Transportation Policy								
Technical Session - 8								
Session Chair: T.B.D								
Session Number	Day	Time	Paper ID	Article Title	Presenter	Corresponding Author	Corresponding Author's Institution	Authors
77	Sep.6 (Wed)	09:00 10:00	PP3347	Evaluation of Tranquility Improvement on Liner Ferry Service -Case Study on the Amami Islands in Japan	Etsuki KAKIMOTO	Kazuhiko ISHIGURO	Kobe University	Etsuki KAKIMOTO; Kazuhiko ISHIGURO; Mikio TAKEBAYASHI
			PP3276	The Study of Establishing Maritime SAR Helicopter Transportation System Model	Chih-Lung HUNG	Chih-Lung HUNG	National Cheng Kung University	Chihlung HUNG; Dzwo-Min DAI
			PP3622	An Analysis of Regional Airline Business Models - the Case of ASEAN	Kuancheng HUANG	Kuancheng HUANG	National Yang Ming Chiao Tung University	Kuancheng HUANG; Yi-Hsin LIN; Yupeii CHOU; Zuhao LIN

			PP3814	Evaluation of the Organization's Search and Rescue Performance for Enhancing Maritime Safety in Malaysia	Che Mohd Hafizuddeen Bin Che MAHADI	Che Mohd Hafizuddeen Che MAHADI	Universiti Malaysia Terengganu	Che Mohd Hafizuddeen Che MAHADI; Kasyapi MOKHTAR; Suzanna Razali CHAN; Lai Fatt CHUAH
Technical Session - 9		50.20: Land Use and Spatial Analysis						
Session Chair: T.B.D								
Session Number	Day	Time	Paper ID	Article Title	Presenter	Corresponding Author	Corresponding Author's Institution	Authors
87	Sep.6 (Wed)	11:30 13:00	PP3544	Characterizing Spatiotemporal Characteristics of Bus Bunching Frequency on a Bus Route Network	Yi-Shih CHUNG	Yi-Shih CHUNG	National Yang Ming Chiao Tung University	Yi-Shih CHUNG; Yi-Chen CHIANG
			PP3649	Spatial Analysis and Recommendation of Bus Rapid Transit Corridor and Infrastructure for Satellite City in a Developing Country: Case of Bekasi City, Indonesia	Daniel Harjuna SATRIAWAN	Yori HERWANGI	Universitas Gadjah Mada	Daniel Harjuna SATRIAWAN; Yori HERWANGI
			PP3601	Evaluating the Public Transit Competitiveness Using Smartcard and Taxi Information Data	Jaeyeon HWANG	Shin Hyoung PARK	University of Seoul	Jaeyeon HWANG; Shin-Hyung CHO; Hochul PARK; Youngchan KIM; Shin Hyoung PARK;
			PP3403	Impact of Ring Road Expressway to Land Value in Suburban Area: A Staggered Did Approach	Jetpan WETWITOO	Jetpan WETWITOO	Creative Research and Planning Co.,Ltd.	Jetpan WETWITOO; Hironori KATO; Yoshikazu KANAI
Technical Session - 10		50.20: Land Use and Spatial Analysis						
Session Chair: T.B.D								
Session Number	Day	Time	Paper ID	Article Title	Presenter	Corresponding Author	Corresponding Author's Institution	Authors
97	Sep.6 (Wed)	14:00 15:30	PP3565	Comprehensive Assessment Model of Shoreline Ecological Sensitivity: To Provide Reference for Port Shoreline Planning	Jiaqi GUO	Wenyuan WANG	Dalian University of Technology	Jiaqi GUO; Shaoping ZHONG; Zhen LI; Zijian GUO; Wenyuan WANG;
			PP3281	A Quasi-Dynamic Location Equilibrium Model Considering Behaviors in Individual Unit for Policy Making Corresponding to Spread of Autonomous Cars	Tetsuji SATO	Tetsuji SATO	Chiba Institute of Technology	Tetsuji SATO; Kazuma OKADA
			PP3476	Queue Length Generation Due to U-Turn Vehicles at Center Median Openings on Divided Highways Using the Time Series Approach.	Vasantha Sk WICKRAMASINGHE	Vasantha WICKRAMASINGHE	University of Peradeniya	Vasantha WICKRAMASINGHE; Hasanka WIJESUNDARA; Piumal KULATUNGA
			PP3269	Study on the Effect of Area Division on Land and Population: A Case in Kofu Urban Area, Japan	Qiaoyu PAN	Qiaoyu PAN	Waseda University Faculty of Science and Engineering	Qiaoyu PAN; Kuniaki SASAKI
Technical Session - 11		100.40: Evaluation on Safety Measures						
Session Chair: T.B.D								
Session Number	Day	Time	Paper ID	Article Title	Presenter	Corresponding Author	Corresponding Author's Institution	Authors
70	Sep.6 (Wed)	15:45 17:15	PP3405	A Binary Logistic Regression Based Investigation of Factors Influencing the Urban Road Crash Severity: A Case Study of Hyderabad, India	Bandhanu Bandhu MAJUMDAR	Bandhanu Bandhu MAJUMDAR	National Institute of Technology Durgapur	Siddardha KORAMATI; Bandhanu Bandhu MAJUMDAR; Prasanta SAHU; Sabyasachi BISWAS; Avijit MAJI;
			PP3441	Estimating the Velocity of Vehicles before and after Crash	Dung Ngoc BUI	Dung Ngoc BUI	University of Transport and Communications	Tuan Thanh NGUYEN; Dung Ngoc BUI; Tien Thanh BUI; Thi Hau
			PP3456	A Case Study in Jamshepdr, India of An Investigation of Risk Element Recognition of Traffic Parameters in Association with Fatal Road Collisions	Sabyasachi BISWAS	Sabyasachi BISWAS	National Institute of Technology Durgapur	Swagata SARKAR; Sabyasachi BISWAS; Bandhanu Bandhu MAJUMDAR; Siddardha KORAMATI;
			PP3693	Development of Simplified Rational Criteria for Identification of Accident Blackspots by Practitioners	Abhishek CHAKRABORTY	Abhishek CHAKRABORTY	Indian Institute of Technology Kharagpur	Abhishek CHAKRABORTY; Saptarshi SEN; Sudipa CHATTERJEE; Venkatesh TELU; Bhargab MAITRA;
			PP3688	Evaluation of Crash Risk During Large Scale Automated Vehicles (AVs) Deployment through Real-Time Crash Prediction	Sultana RAJIA	Sultana RAJIA	Tokyo Institute of Technology School of Environment and Society	Sultana RAJIA; Yasunori MUROMACHI; Moinal HOSSAIN
Room H-Seminar Room7 (S7)								
Technical Session - 1		70.50: Pedestrian and Bicycle						
Session Chair: T.B.D								
Session Number	Day	Time	Paper ID	Article Title	Presenter	Corresponding Author	Corresponding Author's Institution	Authors
8	Sep. 4 (Mon)	14:00 15:30	PP3563	Do Pedestrians Perceive Link and Network Attributes Differently? Results of Conjoint Experiments in Two Indian Cities	Dipanjan NAG	Dipanjan NAG	Norwegian University of Science and Technology Faculty of	Dipanjan NAG; Arkopal Kishore GOSWAMI
			PP3564	Exploring Best Practices for Micromobility Device Infrastructure	Hawa Mohamed JAMIL	Hawa Mohamed JAMIL	Malaysian Institute of Road Safety Research	ROSLAN, Norazirahani Mid YUNIN; Norfaizah Mohamed KHAIDIR; Akmalia SHABADIN; Mohd Shafie
			PP3298	Determination of Locations in Metro Manila for Cycling Infrastructure Intervention Using Spatial, Multi-Criteria Evaluation	Justine SCHNECK	Justine SCHNECK	University of the Philippines Diliman	Justine SCHNECK; Sandy GASPAY
			PP3350	Measuring Walkability on Pedestrian Facilities in Jakarta by Using Modified Global Walkability Index	Agah Muhammad MULYADI	Agah Muhammad Muhammad	Regional Development Planning Agency of Cimahi City	Agah Muhammad Muhammad MULYADI; Wimpy SANTOSA;
			PP3333	Pedestrian Level of Services Evaluation for Transit Hub in Urban Area Case Study of Sudirman Station Area, Jakarta	Sony Sulaksono WIBOWO	Sony Sulaksono WIBOWO	Institut Teknologi Bandung	Sony Sulaksono WIBOWO; Widiyarni WENINGTYAS; Anisah PERTIWI
Technical Session - 2		70.50: Pedestrian and Bicycle						
Session Chair: T.B.D								
Session Number	Day	Time	Paper ID	Article Title	Presenter	Corresponding Author	Corresponding Author's Institution	Authors
18	Sep. 4 (Mon)	15:45 17:15	PP3438	Do We Really Need to Use Mobile Phones While Crossing the Road? The Impact on Pedestrian Safety	Siti Norida WAHAB	Siti Norida WAHAB	Universiti Teknologi Mara Fakulti Pengurusan Perniagaan	Siti Norida WAHAB; Veera Pandiyan Kalliani SUNDRAM; Mohamad
			PP3303	A Comprehensive Study of Pedestrian Safety Behaviour at Urban Signalised T- Intersections	Faizanal HAQUE	Faizanal HAQUE	Jamia Millia Islamia Faculty of Engineering and Technology	Faizanal HAQUE; Farhan KIDWAI; Mohd. Suhail KHAN
			PP3432	Evaluation of Pedestrian Risk at Rotary Intersections Using Surrogate Safety Measures	Ravi Shankar KVR	Ravi Shankar KVR	National Institute of Technology Warangal	Diwakar G.S.; Ravi Shankar KVR; Sesham KOSUHIK
			PP3346	Development of Walking Propensity Index and Comparison of Its Geographical Distribution in the Tokyo Metropolitan Area for 2008 and 2018	Shintaro TERABE	Shintaro TERABE	Tokyo University of Science	Shintaro TERABE; Shuichiro HASE; Hideki YAGINUMA; Kosuke TANAKA; Haruka UNO
			PP3415	A Route Segment Based Approach for Determining Bicycle Level of Service (BLOS) Criteria for Transit Access Trips in Mixed Traffic	Debapratim PANDIT	Niyatha BALAN	Indian Institute of Technology Kharagpur	Niyatha BALAN; Debapratim PANDIT
Technical Session - 3		70.50: Pedestrian and Bicycle						
Session Chair: T.B.D								
Session Number	Day	Time	Paper ID	Article Title	Presenter	Corresponding Author	Corresponding Author's Institution	Authors
28	Sep. 5 (Tue)	09:00 10:00	PP3483	Impact of Traffic Parks on Traffic Safety Education for Elementary School Students	Mital CHAKMA	Mital CHAKMA	Toyoahsi University of Technology	Mital CHAKMA; Kojiro MATSUO; Nao SUGIKI
			PP3336	Determining the Factors Affecting the Utilization of Bicycles on Macarthur Highway: A Case Study in City of San Fernando	Calin Ann Gopez MAGSINO	Calin Ann Gopez MAGSINO	University of the Philippines Diliman	Calin Ann Gopez MAGSINO; Jose Regin REGIDOR
			PP3384	Analysis of Pedestrian Crossing Behavior at Midblock Crosswalks: Evidence from Mae Fah Luang University	Sirin PROMMAKHOT	Tosporn ARREERAS	Mae Fah Luang University	Sirin PROMMAKHOT; Apicha THAOUMUEN; Tosporn ARREERAS; Mikiharu ARIMURA
			PP3494	The Role of Bikesharing as the Last-Mile Service of Public Transportation from an OD Pair Perspective	Yu-Chiun CHIOU	Yu-Chiun CHIOU	National Yang Ming Chiao Tung University	Yu-Chiun CHIOU; Kuo-Chi WU
Technical Session - 4		70.40: Minibus and Paratransit						
Session Chair: T.B.D								
Session Number	Day	Time	Paper ID	Article Title	Presenter	Corresponding Author	Corresponding Author's Institution	Authors
38	Sep. 5 (Tue)	11:30 13:00	PP3798	How Low-Income Individuals Commute in Phnom Penh, Cambodia	Veng Kheang PHUN	Veng Kheang PHUN	Institute of Technology of Cambodia	Veng Kheang PHUN; Tetsuo YAI
			PP3787	An Overview of Informal Public Transport in Asian Cities	Madan B. REGMI	Madan B. REGMI	United Nations	Madan B. REGMI.
			PP3637	Factor Affecting Acceptance of Three Wheeled Vehicle as One of the Public Transport Modes in Malaysia	Akmalia SHABADIN	Akmalia SHABADIN	Malaysian Institute of Road Safety Research	Akmalia SHABADIN; Mohd Shafie NEMMANG; Hawa Mohamed JAMIL; Muhammad Rubaizat Abd GHANI; Siti Zaharah ISHAK
			PP3804	A Research on the Implementation of Pre-Booking Taxis and Shared Ride Taxis in a Mid-Size City, Japan	Tomonori WATARI	Tomonori WATARI	Nagaoka University of Technology Department of Science of Technology Innovation	Tomonori WATARI; Kazushi SANO; Kai WANG; Takao TAKAHASHI; Tepei KATO; Manik MONDAL
Technical Session - 5		70.10: Intercity Railway						
Session Chair: T.B.D								
Session Number	Day	Time	Paper ID	Article Title	Presenter	Corresponding Author	Corresponding Author's Institution	Authors
48	Sep. 5 (Tue)	14:00 15:30	PP3340	Network Theory-Based Approach for Analyzing the Change of South Korean Railway Network Topology in 21 Century	Kanghyun KIM	Jungyeol HONG	Keimyung University	Kanghyun KIM; Jungyeol HONG
			PP3671	An Analysis of Changes in Railway Use Frequency and Commuter Pass Holding in Tokyo During the COVID-19 Pandemic: Insights from Automatic Ticket Gate IC Card Data	Naohiko HIBINO	Naohiko HIBINO	Grips	Naohiko HIBINO; Shinya YAMADA; Masaki HASHIMOTO; Tomohiro AKUTSU
			PP3487	Feasibility of Direct Shinkansen Service to Hakodate Station Using Mini-Shinkansen	Shu OBATA	Shu OBATA	Hokkaido University	Shu OBATA; Kunihiko KISHI; Shin-Ei TAKANO
			PP3297	Modelling an Optimal Unsolicited PPP Project in Urban Rail Transit	Retno Tri AMBARSARI	Retno Tri AMBARSARI	University of Indonesia: Universitas Indonesia	Retno Tri AMBARSARI; Sutanto SOEHODHO
			PP3376	Analyzing Kumamoto City Tram Users' Usage in COVID-19 Using Smartcard Data	Kazuki MIYAZAKI	Kazuki MIYAZAKI	Kumamoto University: Kumamoto Daigaku	Kazuki MIYAZAKI; Takuya MARUYAMA
Technical Session - 6		70.20: Urban Railway, LRT, and Guided Transit System						
Session Chair: T.B.D								
Session Number	Day	Time	Paper ID	Article Title	Presenter	Corresponding Author	Corresponding Author's Institution	Authors
58	Sep. 5 (Tue)	15:45	PP3367	Vulnerability Assessment of Origin-Destination Pairs for Elderly Subway Users Using Smartcard Data	Eun-Jung KIM	Dong-Kyu KIM	Seoul National University	Eun-Jung KIM; Dong-Kyu KIM
			PP3832	Examining the Causal and Dynamic Impacts of the Built Environment on Rail Transit Ridership Using Panel Data from	Donggen WANG	Donggen WANG	Hong Kong Baptist University	Yi GUO; Yuan LIANG; Donggen WANG

		17:15	PP3803	Measuring the Effect of Park-And-Ride Facilities and Interchange Station on Passenger Ridership at the Urban Rail Station in Kuala Lumpur, Malaysia	Mohd Farid Jaafar SIDEK	Mohd Farid Jaafar SIDEK	International Islamic University Malaysia	Mohd Farid Jaafar SIDEK
			PP3422	Railway Risk Prevention by Using Intrusion Detection System	Fuh-Shyong YANG	Fuh-Shyong YANG	National Cheng Kung University College of Management	Yung-Hsiang CHENG; Fuh-Shyong YANG
Technical Session - 7		70.20: Urban Railway, LRT, and Guided Transit System 70.60: Station/Stop/Terminal Facilities Session Chair: T.B.D						
Session Number	Day	Time	Paper ID	Article Title	Presenter	Corresponding Author	Corresponding Author's Institution	Authors
68	Sep. 5 (Tue)	17:00-18:30	PP3676	The Effect of Feeder on Train Usage for Commuters: A Case of Serang City, Indonesia	Dwi Fitri ANANDA	Yori HERWANGI	Universitas Gadjah Mada	Dwi Fitri ANANDA; Yori HERWANGI
			PP3549	Exploring Agglomeration Patterns by Transfer System Types of Urban Railway in Seoul, Korea	Heesoo KIM	Junghwa KIM	Kyonggi University	Heesoo KIM; Junghwa KIM; Soyoung YOO; Nobuhiro UNO
			PP3556	Real-Time Transit Signal Priority Control with Queue Prediction in A V2X Environment	Yu-Ting HSU	Yu-Ting HSU	National Taiwan University	Hsin-Kai HUANG; Yu-Ting HSU
			PP3270	Operational Performance Evaluation of a Container Terminal Daily Report Using Data Mining and Simulation	Tiago Novaes MATHIAS	Tiago Novaes MATHIAS	Kyushu University	Tiago Novaes MATHIAS; Hideyo INUTSUKA; Takeshi SHINODA; Yoshihisa SUGIMURA
			PP3500	Has Motorcycle Use Decreased around Metro Stations? Evidence from the Taipei Metropolitan Area, Taiwan	Bing-Yu CHIU	Bing-yu CHIU	University of Pennsylvania	Bing-Yu CHIU
Technical Session - 8		70.30: Bus and BRT (Bus Rapid Transit) Session Chair: T.B.D						
Session Number	Day	Time	Paper ID	Article Title	Presenter	Corresponding Author	Corresponding Author's Institution	Authors
78	Sep.6 (Wed)	09:00 10:00	PP3258	Electric Bus Charging Scheduling for a Bus Depot	Yufan YANG	Yu ZHOU	National University of Singapore Faculty of Design And Environment	Yufan YANG; Yu ZHOU; Qiang MENG
			PP3566	Estimating the Passenger Waiting Time for Public Buses in Rural Roads - A Case Study in Kandy District, Sri Lanka	P.M.G.D.M. HEARTH	Dhanushka Madusanka HEARTH	University of Peradeniya	Dhanushka Madusanka HEARTH; V. WICKRAMASINGHE; W.R.S.S. DHARMAATHANA; A.G.H.J. EDIRISINGHE
			PP3721	Relationship Between Round-Trip Usage and Route Characteristics of Bus Stop OD - Case Study of Community Bus in Nishin City, Tokyo	Seiki ITO	Yukimasa MATSUMOTO	Meijo University	Seiki ITO; Yukimasa MATSUMOTO
			PP3816	Factors Influencing the User's Satisfaction in Context of Public Transport in Indian Cities	Arjun Singh LODHI	Arjun Singh LODHI	Maulana Azad National Institute of Technology	Arjun Singh LODHI; Anuj JAISWAL; Gautam SACHAN
Technical Session - 9		70.30: Bus and BRT (Bus Rapid Transit) Session Chair: T.B.D						
Session Number	Day	Time	Paper ID	Article Title	Presenter	Corresponding Author	Corresponding Author's Institution	Authors
88	Sep.6 (Wed)	11:30 13:00	PP3358	Developing Operation Failure Criteria for Bus Bunching Management Based on Relative Location Graph Data	Tae-Hyung KIM	Dong-Kyu KIM	Seoul National University	Tae-Hyung KIM; Dong-Kyu KIM
			PP3361	Analysis of Changes in Demand before and after the Restructuring of "Tsukubus"	Tsubasa FUKAI	Tsubasa FUKAI	Tsukuba Daigaku Rikogakugun	Tsubasa FUKAI; Naohisa OKAMOTO
			PP3569	Identifying Critical Bus Stops in an Urban Road Network Influencing Spatio-Temporal Variation of Bus Journey Time	Bhargab MAITRA	Bhargab MAITRA	Indian Institute of Technology Kharagpur, India	Suman GANGULY; Bhargab MAITRA
			PP3788	A Short-Turning Bus Schedule Design for Bus Bunching Alleviation	Bo SUN	Yu ZHOU	National University of Singapore Faculty of Design and Environment	Longpai PAN; Yu ZHOU; Qiang MENG
			PP3515	Point and Interval Prediction of the Bus Section Travel Time in Urban Areas by Using a Logistic Burr Mixture Autoregressive	Victor Low Jian MING	Hooi Ling KHOO	Universiti Tunku Abdul Rahman	Jian MING; Hooi Ling KHOO; Wooi Chen KHOO
Technical Session - 10		70.30: Bus and BRT (Bus Rapid Transit) Session Chair: T.B.D						
Session Number	Day	Time	Paper ID	Article Title	Presenter	Corresponding Author	Corresponding Author's Institution	Authors
98	Sep.6 (Wed)	14:00 15:30	PP3321	Estimating the Potential Bus Rapid Transit Demand in Lipa City, Philippines	Geowell Neil Gamaliel Rosales	Crispin Emmanuel D. DIAZ	De La Salle University Gokongwei College of Engineering	Geowell NEIL; Cresencio MONTALBO; Alexis FILLONE
			PP3672	Public Bus Tracking System - Consistency Check and Its Usefulness to the Commuters and Researchers in Developing Countries	Saptarshi SEN	Saptarshi SEN	IIT Kharagpur: Indian Institute of Technology Kharagpur	Saptarshi SEN; Sudip Kumar ROY
			PP3738	Understanding Spatial Trends in Trip Length Distribution Using Smart Card Data: A Case Study of Surat City, India	Rohit RATHOD	Parth Mukesh JHAVERI	Sardar Vallabhbhai National Institute of Technology	Parth Mukesh JHAVERI; Rohit RATHOD; Shrinivas ARKATKAR; Gaurang JOSHI; Rajesh PANDYA;
			PP3835	Effect of Personality and Skills on Driving Behavior and Accident Involvement of Professional Bus Drivers	Harpreet SINGH	Harpreet SINGH	Indian Institute of Technology Jammu	Harpreet SINGH; Ankit KATHURIA
			PP3758	Flexible Bus Network Timetabling to Maximize Synchronization with Uncertainty Factors	Si WU	Satoshi SUGIURA	Hokkaido University Faculty of Engineering	Si WU; Michiko AKIOKA; Satoshi SUGIURA
Technical Session - 11		120.30: Impact Analysis Session Chair: T.B.D						
Session Number	Day	Time	Paper ID	Article Title	Presenter	Corresponding Author	Corresponding Author's Institution	Authors
80	Sep.6 (Wed)	15:45 17:15	PP3745	Impact of Telecommuting Arrangements, Occupation and Travel Mode on Avoided Commute Time and Travel Cost - Initial Evidence from Metro Manila	Crispin Emmanuel D DIAZ	Crispin Emmanuel D. DIAZ	School of Urban and Regional Planning	Crispin Emmanuel D. DIAZ
			PP3668	Recommendations for Sustainable New Mobility Services for Well-Being: Cases from Japan	Koichi FUJISAKI	Koichi FUJISAKI	Japan Transport and Tourism Research Institute	Koichi FUJISAKI; Makoto KOIZUMI; Hironobu ADACHI; Wataru KOBAYASHI; Tomoko YASUDA;
			PP3602	Policy of Battery Electric Vehicle Charging Infrastructure in China and Singapore	Shintaro TERABE	Shintaro TERABE	Tokyo University of Science	Shintaro TERABE
			PP3608	Review on the Transport S&T Projects Under the Department of Science and Technology (DOST): Its Impact to the Region of	Habana, RACHEL	Rachel Ross HABANA	Department of Science and Technology	Rachel Ross HABANA; Hussein LIDASAN
Room 1-Seminar Room9 (S9)		100.10: Accident Analysis Session Chair: T.B.D						
Session Number	Day	Time	Paper ID	Article Title	Presenter	Corresponding Author	Corresponding Author's Institution	Authors
9	Sep. 4 (Mon)	14:00 15:30	PP3285	Traffic Flow Characteristics and Traffic Conflict Analysis in the Downstream Area of Expressway Toll Station Based on Vehicle	Qiaoqiao REN	Min XU	The Hong Kong Polytechnic University	Qiaoqiao REN; Jie HE; Ziyang LIU; Min XU
			PP3314	Signalized Intersection Crashes in Vietnam: In-Depth Identifying Crash Causation Patterns by Applying the Crash Reconstruction	Dinh Vinh Man NGUYEN	Man Dinh Vinh NGUYEN	Vietnamese-German University	Man Dinh Vinh NGUYEN; Anh Tuan VU
			PP3326	A Discussion on the Relativity between the Number of Accidents and the Number of Rapid Deceleration Events at Intersections on	Ryo INAGAKI	Ryo INAGAKI	Toyohashi University of Technology	Ryo INAGAKI; Kojiro MATSUO; Nao SUGIKI
			PP3576	Predicting Risky Driving Behaviour of Malaysian Drivers Using the Self-Report Driving Behaviour Questionnaire (DBQ)	Nur Shazwani ROSLI	Nur Shazwani ROSLI	Sunway University	Nur Shazwani ROSLI
			PP3583	Analysis of Road Safety Behaviour of School Children for Active Transport Modes: A Case Study of India	Yogeshwar V. NAVANDAR	Yogeshwar V. NAVANDAR	National Institute of Technology Calicut	Manjunath BORAKANAVAR; Sneha BABU; Hoai Nguyen PHAM; Yogeshwar V. NAVANDAR; K
Technical Session - 2		100.10: Accident Analysis Session Chair: T.B.D						
Session Number	Day	Time	Paper ID	Article Title	Presenter	Corresponding Author	Corresponding Author's Institution	Authors
19	Sep. 4 (Mon)	15:45 17:15	PP3614	The Positive Driver Behavior Scale (PDBS) in Pakistan - An Investigation of Reliability and Validity	Adnan YOUSAF	Adnan YOUSAF	Tsinghua University School of Civil Engineering	Adnan Yousaf SCHOLAR; Jianping WU
			PP3344	Effectiveness of Intelligent Signalized Pedestrian Crossing at Midblock Locations on Urban Arterial Roads in Thailand	Pongsatorn PECHTEEP	Pongsatorn PECHTEEP	Prince of Songkla University - Hat Yai Campus	Pongsatorn PECHTEEP; Paramet LUATHEP; Nopadon KRONPRASERT; Sitha
			PP3271	Exploring Temporal Factors Affecting Driver Involvement in Fatal Crashes	Kun-Feng WU	Kun-Feng WU	National Yang Ming Chiao Tung University	Kun-Feng WU; Lekshmi SASIDHARAN; Monica MENENDEZ
			PP3560	Appropriate Traffic Safety Measures for Traffic Conditions with High Accident Risk	Yoshitomo ORINO	Yoshitomo ORINO	Central Nippon Expressway Co., Ltd	Yoshitomo ORINO; Toshio YOSHII; Takahiro TSUBOTA; Ryo
			PP3284	Indonesian Safety Performance Functions (SPFs) and Analysis Tools	Shane TURNER	Shane TURNER	Abley	Shane TURNER; Handiyana ARIEPHIN; Lewis MARTIN
Technical Session - 3		100.10: Accident Analysis Session Chair: T.B.D						
Session Number	Day	Time	Paper ID	Article Title	Presenter	Corresponding Author	Corresponding Author's Institution	Authors
29	Sep. 5 (Tue)	09:00 10:00	PP3705	Spatio-Temporal Analysis and Severity Analysis Using Machine Learning Classifiers for Electric Vehicle Crashes Data of Metro Manila, Philippines	Aaron Michael SALANG	Aaron Michael SALANG	University of the Philippines Diliman	Aaron Michael SALANG; Sheila Flor JAVIER; Jerome BALLARTA; Jebus Edrei TAGULAM
			PP3443	Evaluation of Enhancement of Star Rating and Risk Factor in Eight Schools of Kathmandu, Nepal	Hemant TIWARI	Hemant TIWARI	Society of Transport Engineer Nepal	Hemant TIWARI; Sanjay LUITEL
			PP3810	Analysis of Risk Factors Affecting the Accident Frequency Occurring in Short-Term on Expressways under Snow Conditions	Bui Tien MANH	Bui Tien MANH	Nagaoka University of Technology Department of Civil and Environmental Engineering	Bui Tien MANH; Kazushi SAN0; Manik MONDAL; Takumi TAKAKURA
			PP3756	Estimating Levels of Underreporting for Road Traffic Crashes Using Emergency Call Records	Asha S VISWANATHAN	Asha S VISWANATHAN	Indian Institute of Technology Delhi	Asha S VISWANATHAN; Sumit BILAM; Rahul GOEL
Technical Session - 4		100.20: Driving Behavior and Safety Session Chair: T.B.D						
Session Number	Day	Time	Paper ID	Article Title	Presenter	Corresponding Author	Corresponding Author's Institution	Authors
39	Sep. 5 (Tue)	11:30	PP3510	Two-Wheeler Driving Behavior at a Directional Island: Speed Analysis in Indian Scenario	Suraj GUPTA	Suraj GUPTA	Indian Institute of Technology Roorkee	Suraj GUPTA.; Rajat RASTOGI
			PP3460	Study on a Methodology for Single Scenario Integration for Safety Validation of Continuous Automated Vehicles	Inyoung KIM	Ilsoo YUN	Ajou University	Inyoung KIM; Woori KO; Sihyeon MOON; Donghyo KANG; Ilsoo YUN;

		13:00	PP3733	Rider's Response at Speed Breaker: A Traffic Calming Measure or a Hazard?	Monik GUPTA	Monik GUPTA	Indian Institute of Technology Bombay	Monik GUPTA; Nagendra VELAGA
			PP3416	A Pilot Study of a Crowd Emergency Response System Using Wearable Devices	Hoe Kyoung KIM	Hoe Kyoung KIM	Dong-A University	Hoe Kyoung KIM; Jihyo JEONG; Soyun KIM; Jungun CHA; Jihyeon KIM
100.20: Driving Behavior and Safety								
Technical Session - 5								
Session Chair: T.B.D								
Session Number	Day	Time	Paper ID	Article Title	Presenter	Corresponding Author	Corresponding Author's Institution	Authors
49	Sep. 5 (Tue)	14:00 15:30	PP3327	Automated Enforcement System (AES) in Reducing Speeding Behaviours in Peninsular Malaysia: Perception of Being Caught	Suhaila Abdul HANAN	Suhaila Abdul HANAN	Universiti Utara Malaysia	Zhi Qi CH'NG; Poh Kei TAI; Suhaila Abdul HANAN
			PP3351	Investigating the Influence of Two-Wheelers and Auto-Rickshaws on Severity of Right-Turning Vehicles Conflicts at Unsignalized T-Intersections under Mixed Traffic	Someswara Rao BONELA	Someswara Rao BONELA	National Institute of Technology Warangal	Someswara Rao BONELA; B Raghuram KADALI
			PP3370	Factors for Opportunity Left-Turn Traffic Conflicts at Urban Signalized Intersections	Shou-Ren HU	Shou-Ren HU	National Yang Ming Chiao Tung University	Yu-Tzu LIN; Yi-Hsun SU; Shou-Ren HU
			PP3683	Drivers Collision Avoidance Behavior Focusing on the Timing of Visual Perception for Pedestrians when Turning Right at Signalized	Chinami FUKUI	Chinami FUKUI	Hokkaido University	Chinami FUKUI; Sho TAKAHASHI; Toru HAGIWARA
			PP3633	A Review of Interventions towards Addressing Mental Health Issues among Drivers: Application and Implication to Malaysia	Nuura Addina MOHAMAD	Nuura Addina MOHAMAD	Malaysian Institute of Road Safety Research	Nuura Addina MOHAMAD
100.20: Driving Behavior and Safety								
Technical Session - 6								
Session Chair: T.B.D								
Session Number	Day	Time	Paper ID	Article Title	Presenter	Corresponding Author	Corresponding Author's Institution	Authors
59	Sep. 5 (Tue)	15:45 17:15	PP3663	Single Abs Motorcycle Braking Tests on Dry, Straight Path	Afiqah OMAR	Afiqah OMAR	Malaysian Institute of Road Safety Research	Afiqah OMAR; Fauziana LAMIN; Noor Kamaliah ALIAS
			PP3436	A Study of Road Access Wayfinding on Young Road Users Using Operant Conditioning Method	Nur Khairiel ANUAR	Nur Khairiel ANUAR	Universiti Utara Malaysia	Nur Khairiel ANUAR; Rohafiz SABAR
			PP3526	Impact of Driver Distraction on Time-To-Collision: A Pilot Study	Shannen Teo SIN-CHZE	Sitti Asmah HASSAN	Universiti Teknologi Malaysia	Shannen Sin-Chze TEO; Rusdi RUSLI; Sitti HASSAN
			PP3301	Effects of Physical Functional Characteristics of Older Drivers on Spatial Cognition at Unsignalized Intersections	Yasuhiro MIMURA	Yasuhiro MIMURA	Toyota Transportation Research Institute	Yasuhiro MIMURA; Keichi HIGUCHI; Ryo TOMURA; Shinji YOSHIDA
			PP3651	Relating Impact Speed to Vehicle Occupant's Risk of Serious Injury in a Road Crash	Fauziana LAMIN	Fauziana LAMIN	Malaysian Institute of Road Safety Research	Fauziana LAMIN; Afiqah OMAR; Yahaya AHMAD; Mohd Amiruddin Mohd Radzi D; Noor Kamaliah ALIAS; Nurulhana BORHAN
100.20: Driving Behavior and Safety								
Technical Session - 7								
Session Chair: T.B.D								
Session Number	Day	Time	Paper ID	Article Title	Presenter	Corresponding Author	Corresponding Author's Institution	Authors
69	Sep. 5 (Tue)	17:00-18:30	PP3616	Influence of Motorcyclists' Riding Behaviour on Crash Risks: An Experience from a Mid-Sized Indian City	Abhishek CHAKRABORTY	Abhishek CHAKRABORTY	Indian Institute of Technology Kharagpur	Abhishek CHAKRABORTY; Bhargab MAITRA
			PP3723	An Investigation into the Variability of Critical Speed and Critical Speed Positions in Four-Lane Hilly Roads	Kuldeep KALITA	Kuldeep KALITA	Indian Institute of Technology Guwahati	Kuldeep KALITA; Akhilesh MAURYA; Suresh NAMA
			PP3650	A Holistic Framework of Active Lifelong Learning Ecosystem Metaphor in Traffic Safety Education Targeting Secondary School Students in Vietnam, India, and Nepal	Hoai Nguyen PHAM	Hoai Nguyen PHAM	University of Economics Ho Chi Minh City	Hoai Nguyen PHAM; Ariane CUENEN; Tu TRINH; Yogeshwar NAVANDAR; Geert WETS; Davy JANSSENS
			PP3455	A Study on the Development Methodology of Automated Vehicle Safety Assessment Scenario	Woori KO	Ilsoo YUN	Ajou University	Woori KO; Inyoung KIM; Jungueun YOON; Yejin KIM; Ilsoo YUN;
			PP3765	Evaluation Process for Real-Road Testing of the Automated Vehicles in the Expressway	Youngtaek LEE	Youngtaek LEE	Ajou University	Youngtaek LEE; Jinyoung KIM; Jongmin NOH; Sanghyun LEE; Ilsoo
100.10: Accident Analysis								
Technical Session - 8								
Session Chair: T.B.D								
Session Number	Day	Time	Paper ID	Article Title	Presenter	Corresponding Author	Corresponding Author's Institution	Authors
79	Sep.6 (Wed)	09:00 10:00	PP3639	Analysis of Risk-Taking Behaviours among Cyclists in Malaysia	Rusdi RUSLI	Rusdi RUSLI	Universiti Teknologi Mara	Rusdi RUSLI; Ahmad Haji SHAHIMI
			PP3391	A New Methodology for Evaluating the Accident Risk of Level 3 Autonomous Vehicles	Maen Qasem GHADI	Maen Qasem GHADI	Al-Zaytoonah Private University of Jordan	Maen Qasem GHADI
			PP3805	What Factors Affect the Collision Severity of Autonomous Vehicles? Derived from Modeling and Learning Approach	Changhun KIM	Junghwa KIM	Kyonggi University	Changhun KIM; Junghwa KIM
			PP3589	Influence of Weather and Road Characteristics on Pedestrian Crash Severity at Intersection Using MI Approach	Rocksana AKTER	Rocksana AKTER	Monash University Malaysia	Rocksana AKTER; Susilawati SUSILAWATI; Ziyuan PU; Hamza
100.10: Accident Analysis								
Technical Session - 9								
Session Chair: T.B.D								
Session Number	Day	Time	Paper ID	Article Title	Presenter	Corresponding Author	Corresponding Author's Institution	Authors
89	Sep.6 (Wed)	11:30 13:00	PP3794	Evaluation of Road Safety Behaviour of School-Going Children in India	Yogeshwar V. NAVANDAR	Dr. Yogeshwar V. NAVANDAR	National Institute of Technology Calicut	Manjunath BORAKANAVAR; Sneha BABU; Nguyen Hoai PHAM; Yogeshwar V. NAVANDAR; K
			PP3644	Black Spot Cluster Analysis of Road Crash Involving Public Utility Vehicles (PUV) Along Commonwealth Avenue Using Kernel	Jerome BALLARTA	Jerome Nalian BALLARTA	Up National Center for Transportation Studies	Jerome Nalian BALLARTA; Sheila JAVIER; Carolyn MERCADER
			PP3640	Exploring Impact Patterns of Freeway Incidents: Estimation Time Delay Using Tobit Model, Machine Learning, and Deep Learning	Yu-Ting HSU	Yu-Ting HSU	National Taiwan University	Chung-Kang HSIAO; Yu-Ting HSU
			PP3726	Factor Affecting Analysis for the Severity Level of Road Accident During COVID-19 in Yangon, Myanmar	Dr. KYAING	Kyaing KYAING	Yangon Technological University	Daw KYAING
			PP3714	Analysis of Road Traffic Crash Severity Through Machine Learning on Indian Highways	Sudipa CHATTERJEE	Sudipa CHATTERJEE	Indian Institute of Technology Kharagpur	Tanishq GARG; Sudipa CHATTERJEE; Bhargab MAITRA
100.10: Accident Analysis								
Technical Session - 10								
Session Chair: T.B.D								
Session Number	Day	Time	Paper ID	Article Title	Presenter	Corresponding Author	Corresponding Author's Institution	Authors
99	Sep.6 (Wed)	14:00 15:30	PP3371	Study of Motorcycle Rider Casualties at Signalized and Unsignalized Intersections	Ricardo SIGUA	Ricardo SIGUA	Institute of Civil Engineering	Miguel Rodolfo VINA; Ricardo SIGUA
			PP3585	Road Crash Characteristics in Metro Manila Based on Road Crash Reporting System	Glenn Simon D. LATONERO	Glenn Simon Dayrit LATONERO	University of The Philippines Diliman	Glenn Simon Dayrit LATONERO; Ricardo SIGUA; Sahid KAMID; Sherman AVENDAÑO
			PP3797	An Analysis of Motorcycle Rear-End Collision Involving Heavy Goods Vehicles (HGV) in Malaysia	Rizati Bitni HAMIDUN	Rizati HAMIDUN	Malaysian Institute of Road Safety Research (Miros)	Rizati HAMIDUN; Nor Izzah ZAINUDDIN; Sharifah LIEW; Nora Sheda Mohd ZULKIFFLI; Azzuhana
			PP3728	The Relationships among Traffic Environment, Land Uses, Commercial Activities, and Traffic Accidents	Yu-Ting HUANG	Yu-Ting HUANG	National Cheng Kung University	Yu-Ting HUANG; Tzu-Chang LEE
			PP3701	Prediction of Unknown Striking Vehicles in Motorized Two-Wheeler Hit-and-Run Crashes in Delhi	Anurag THOMBRE	Anurag THOMBRE	Indian Institute of Technology Roorkee	Anurag THOMBRE; Jatin BHANDARI; Amit AGARWAL; Indrajit GHOSH
110.30: Airport Planning, Engineering, and Management								
Technical Session - 11								
Session Chair: T.B.D								
Session Number	Day	Time	Paper ID	Article Title	Presenter	Corresponding Author	Corresponding Author's Institution	Authors
90	Sep.6 (Wed)	15:45 17:15	PP3743	Estimation Model of the Departure Flight Delay to Enhance Airfield Capacity and Operational Efficiency of Kaohsiung International	Sui-Ling LI	Sui-Ling LI	National Taiwan University of Science and Technology	Sui-Ling LI
			PP3792	A Study on Departing Passengers' Flow Prediction Using Aodh Data	Doekbae AN	Jang Hoon PARK	Korea Aerospace University	Doekbae AN; Hojong BAIK; Jang Hoon PARK
			PP3389	Hydroplaning Occurrence Based on Mean Texture Depth, Wet Weather Condition, and Aircraft Characteristics	Ervin AHYUDANARI	Ervin AHYUDANARI	Institut Teknologi Sepuluh Nopember	Rika PUTRI; Ervin AHYUDANARI
			PP3392	Airport Systems in Japan and the U.K.: Insights from the Power Law	Hidenobu MATSUMOTO	Hidenobu MATSUMOTO	Kansei Gakuin Daigaku - Kobe Sanda Campus	Hidenobu MATSUMOTO; Koji DOMAE
			PP3559	Direct and Indirect Effects of Economic Development on Motorcycle to Car Ownership Ratio	Alvin Wai Hoong POI	Alvin Wai Hoong POI	Malaysian Institute of Road Safety Research	Alvin Wai Hoong POI; Teik Hua LAW; Hussain HAMID; Fauzan Mohd JAKARNI; Siti Zaharah ISHAK;
Room K - Poster Area								
Poster Session - A								
Session Number	Day	Time	Paper ID	Article Title	Presenter	Corresponding Author	Corresponding Author's Institution	Authors
			PP3379	Determining the Diagnostic Parameters for Locomotive Diesel Engines	Naranbaatar ERDENESUREN	Naranbaatar ERDENESUREN	Mongolian University of Science and Technology	Galbadrakh SANDAG; Naranbaatar ERDENESUREN; Ariunbayar SAMDANTSOODOL
			PP3610	Designing Data Modeling for Road Safety Integrated Data Storage for the Philippines	Maywadee SOYTONG	Maywadee SOYTONG	University of the Philippines Diliman	Maywadee SOYTONG; Adrian Roy L. VALDEZ; Susan PANCHOFESTIN
			PP3632	Structure of a High-Speed Rail Corridor: Long-Term Planning Implications for Sustainable Regional Development along High-	Shreyas BHARULE	Shreyas Pramod BHARULE	Indian Institute of Technology Kharagpur	Shreyas Pramod BHARULE
			PP3349	The Impact of Michi-No-Eki with Urban Amenities on Shopping Difficulty and Social Interaction	Wan Adam Bin Wan Mohd	Noboru ISE	National University College of Technology	Noboru ISE; Wan SUHAIMI; Takeshi HIROSE
			PP3342	Demand Based Distribution of Charging Station for Electric Vehicle: A Case Study of Ulaanbaatar City	Ariunbayar SAMDANTSOODOL	Ariunbayar SAMDANTSOODOL	School of Mechanical Engineering and Transportation	Ariunbayar SAMDANTSOODOL; Naranbaatar ERDENESUREN
			PP3364	Determining Initial Speed in Automotive Accident Reconstruction: A Method Based on Energy Expenditure on Vehicle Elastic Elements	Ganjargal OSORKHUU	Ganjargal OSORKHUU	Mongolian University of Science and Technology	Ganjargal OSORKHUU; Bayarsaikhan BAYASGALAN
			PP3417	Sustainability Orientation Enhances Digital Transformation Intention: Through Digital Collaboration and Building Relative	Chung-Shan YANG	Chung-Shan YANG	Chang Jung Christian University	Chung-Shan YANG

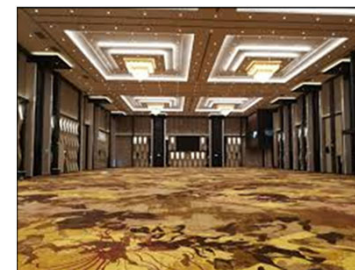
201	Sep. 4 (Mon)	14:00-16:30	PP3800	Maritime Disaster and COVID-19: Case Study on Control Measures and Risk Mitigation	Suzanna Razali CHAN	Suzanna Razali CHAN	Malaysian Maritime Enforcement Agency	Suzanna Razali CHAN; Masha Nur Salsabela MENHAT; Izyan Munirah Mohd ZAIDEEN; Kasypi MOHK TAR
			PP3411	Important Factors to Influence Maritime Express Delivery Services across Taiwan Strait	Rong-Her CHIU	Rong-Her CHIU	National Taiwan Ocean University	Rong-Her CHIU; Cheng-Chieh CHIEN; Yen-Hsu LIN; Feng-Gi YANG
			PP3320	The Effects of Different Types of Leisure Activities on Mental Health in Indonesia and Thailand	Fabianus Sebastian KEVIN	Fabianus Sebastian KEVIN	Parahyangan Catholic University	Fabianus Sebastian KEVIN; Tri Basuki JOEWONO; Dimas Bayu Endrayana DHARMAWJOYO
			PP3817	The Research for Optimal Introduction of Smart Pedestrian Safety Systems Using Conjoint Analysis	Hyungjun KIM	Sukhee KIM	Suwon Research Institute	Sukhee KIM; Hyungjun KIM
			PP3785	A Study of Social Factors That Affect the Transportation Mode Choice of the Resident for Working Trip in Sibul, Sarawak, Malaysia	Chieng Chui CHEE	Chieng Chui CHEE	Universiti Malaya	Bor Tsong TEH; Noor Hashimah Hashim LIM; Nik Hazwani Nik HASHIM; Chui Chee CHIENG; Rama Krishna SUPRAMANIAN;
			PP3561	Assessment of Risk Factors for Road Crashes Based on Road Safety Audits	Dr. Satyajit MONDAL	Satyajit MONDAL	National Institute of Technology Patna	Satyajit MONDAL; Ankit GUPTA
			PP3399	Computation of Particulate Emission Load from Vehicular Traffic on Road Network	Sourav MISHRA	Sourav MISHRA	Sardar Vallabhbhai National Institute of Technology	Sourav MISHRA; Madhumita CHAKRABORTY; Robin A.
			PP3689	Injury Severity Analysis of Motorcycle Crashes: A Comprehensive Review of the Existing Methods and Future Direction	Dodi ZULHERMAN	Dodi ZULHERMAN	Gifu University Faculty of Engineering Graduate School of	Dodi ZULHERMAN; Jia YANG; Kosuke SHIMIZU; Yasuami YOKOTA
			PP3839	Development and Application of Transfer Service Level for Transfer Centers	Kyunggho KIM	Kyunggho KIM	Seoul National University of Science & Technology	Kyunggho KIM; Sigon KIM
PP3836	Role of Surrogate Safety Measures in Assessing Roundabout Safety: A Systematic Review	Anamika YADAV	Anamika YADAV	Indian Institute of Technology, Jammu	Anamika YADAV; Ankit KATHURIA			
Poster Session - B								
Session Number	Day	Time	Paper ID	Article Title	Presenter	Corresponding Author	Corresponding Author's Institution	Authors
202	Sep. 5 (Tue)	9:30-12:00	PP3548	Build Sustainable Walking Environment around Metro Station in Ho Chi Minh City, Viet Nam	Tran Thanh Duy NGUYEN	Tran Thanh Duy NGUYEN	Nagaoka University of Technology Department of Civil and Environmental Engineering	Tran Thanh Duy NGUYEN; Tran Thanh Duy NGUYEN; Thi Nhu Quynh PHAN; Chonnipa PUPPATERAVANIT; Sano KAZUSHI; Kato TEPPEI
			PP3629	Factors Affecting the Safety Perception of Helmet and Seat Belt Use: A Bayesian Network Approach	Moimul HOSSAIN	Moimul HOSSAIN	Islamic University of Technology	Moimul HOSSAIN; Niaz MAHMUD; Dewan Tanvir AHAMMED; Afia Jahin PREMA; Asif RAIHAN;
			PP3628	Jaywalking, Mobile Phone Use, and Pedestrian Safety in Context of a Developing Country	Moimul HOSSAIN	Moimul HOSSAIN	Islamic University of Technology	Moimul HOSSAIN; Niaz MAHMUD; Dewan Tanvir AHAMMED; Afia Jahin PREMA; Asif RAIHAN;
			PP3262	The Sustainable Green Energy Development of M.R.T. System in Taiwan	Fuh-Shyong YANG	Fuh-Shyong YANG	National Cheng Kung University College of Management	Fuh-Shyong YANG; Chao-Wei LU
			PP3674	Modelling the Trip-Making Behavior of Residents of Mysore City, India	Darshana OTHAYOTH	Darshana OTHAYOTH	National Institute of Technology Tiruchirappalli	Ghansham MULKALWAR; Darshana OTHAYOTH; Marisamynathan S; Ravisekhar CHALUMURI
			PP3365	Results of Study on Effects of Technical Condition to the Ecological Factors of Gasoline Engines	Nyamdulam TSOODOL	Nyamdulam TSOODOL	School of Mechanical Engineering and Transportation	Nyamdulam TSOODOL
			PP3481	Road Safety Assessment for Pedestrians on the Chingeltei Street	Erdenetuya AMGALAN	Erdenetuya AMGALAN	School of Mechanical Engineering at Must	Erdenetuya AMGALAN.
			PP3801	Analysis of Transport Oda Policies in Korea Focused on the Mid-Long-Term Strategy	Jisoo LEE	Jisoo LEE	Korea Transport Institute	Jisoo LEE.
			PP3302	Expressway Connectivity and Socioeconomic Growth: A Case Study of Vietnam	Minh Tu TRAN	Minh Tu Minh TRAN	Almec Vietnam Corporation	Minh Tu Minh TRAN; Hajime SEYA; Shunta AOKI
			PP3339	An Introduction to Personalized Travel Recommendation Systems for Mobile Devices	Uyanga SUKHBAAATAR	Uyanga SUKHBAAATAR	Mongolian University of Science and Technology	Uyanga SUKHBAAATAR; Daariimaa ENKHTUYA; Amarmend
			PP3505	Motorcyclist Riding Behaviour Study at Multilane Roundabout	Fung Yun CHONG	Fung Yun CHONG	Universiti Malaya Faculty of Engineering	Fung Yun CHONG; Choon Wah YUEN; Rosilawati Binti ZAINOL; Norfaizah Mohamad KHAIDIR
			PP3497	Go Electrical: Investigating the Factors Affecting Acceptance of Converting Petrol-Vehicles to Electric Vehicles	Ching-Ming LAI	Ching-Ming LAI	National Cheng Kung University	Ching-Fu CHEN; Ching-Ming LAI
			PP3590	Using Geo-Tagged Tweets for Understanding Temporal and Spatial Activity Distributions in Kyoto	Mingyu BI	Wenzhe SUN	Kyoto University; Kyoto Daigaku	Mingyu BI; Wenzhe SUN; Jan-Dirk SCHMÖCKER; Yue MA; Borja MOYA-GÓMEZ; Satoshi NAKAO
			PP3257	Policy Recommendation of Key Performance Indicators (KPIs) for Light Rail Transit Systems in the Philippines: A Case Study on the KPIs of the LRT-1 System	Mia Irish M. ZOTOMAYOR	Mia Irish Matienzo ZOTOMAYOR	De La Salle University	Mia Irish Matienzo ZOTOMAYOR; Alexis FILLONE
			PP3331	Modelling Motorized Two-Wheeler Riders Risky Riding Behaviour	Darshana O	Darshana OTHAYOTH	National Institute of Technology Tiruchirappalli	Buddiga Venkata Durga PRASAD; Darshana OTHAYOTH
			PP3732	Gaps in Measuring Tod in Jakarta, Indonesia: A Comparative Analysis of Different Expert Groups and MCDM Methods	Reza ABDULLAH	Reza ABDULLAH	Hiroshima University	Reza ABDULLAH; Blessy XAVIER; Hyewon NAMGUNG; Varun VARGHESE; Akimasa FUJIWARA
PP3457	Investigation of Motorized Two-Wheeler Riders Behaviours, Perception towards Road Safety and Infrastructural Demands under Mixed Traffic Conditions Using Machine Learning	Madhumita PAUL	Madhumita PAUL	Indian Institute of Technology Kharagpur	Snehil VIJAYVARGIYA; Tejas SHARMA; Aayush Kumar VERMA; Balasahab MULE; Madhumita PAUL;			
Poster Session - C								
Session Number	Day	Time	Paper ID	Article Title	Presenter	Corresponding Author	Corresponding Author's Institution	Authors
203	Sep. 5 (Tue)	14:00-16:30	PP3624	Exploring Factors Impact on Passengers' Preference in Baggage Collection Service: A Case Study at Singapore Changi Airport	Thi Anh Hong NGUYEN	Thi Anh Hong NGUYEN	Singapore University of Technology and Design Sutd Academy	Thi Anh Hong Thi Anh NGUYEN; Stefan TUCHEN; Sam Conrad JOYCE; Lucienne Theresia Maria BLESSING; Lynette CHEAH
			PP3670	Comparative Study on the Effectiveness of Traffic Safety Workshop for High School Students by Using Naturalistic Cycling Data	Fumiya ISHIGAMORI	Fumiya ISHIGAMORI	Osaka Metropolitan University	Fumiya ISHIGAMORI; Nagahiro YOSHIDA
			PP3555	Evaluation of E-Scooter and Automobile Driver's Perceived Safety and Comfort During Overtaking Based on Field Driving Tests	Keisuke YOSHIOKA	Keisuke YOSHIOKA	Nihon Daigaku	Keisuke YOSHIOKA; Sumio SHIMOKAWA; Jumpei KIKKAWA
			PP3781	An Analysis of Road Safety Trends in Mongolia	Bayarsaikhan BAYASGALAN	Bayarsaikhan BAYASGALAN	School of Mechanical and Transportation Engineering	Bayarsaikhan BAYASGALAN; Lhagsvasuren BAYUUDORJ; Ganjargal
			PP3343	Researching to Improve Lifting Force of UAVs for Agricultural Purposes	Amarmend GALSANDORJ	Amarmend GALSANDORJ	Mongolian University of Science and Technology	Amarmend GALSANDORJ; Uyanga SUKHBAAATAR; Daariimaa ENKHTUYA
			PP3374	Study of the Aerodynamic Characteristics of Multi-Engine Wings	Amarmend GALSANDORJ	Amarmend GALSANDORJ	Mongolian University of Science and Technology	Amarmend GALSANDORJ; Daariimaa ENKHTUYA; Uyanga SUKHBAAATAR
			PP3594	The Impacts of COVID-19 on Japanese Real Estate Market	Ryo SAITO	Hajime SEYA	Kobe Daigaku	Ryo SAITO; Hajime SEYA
			PP3827	A Proactive Approach for Hotspot Identification at Urban Transport Network	Suvin P. VENTHURUTHY	Suvin Padinjare VENTHURUTHY	Indian Institute of Technology Hyderabad	Vedant BHAMARE; Suvin Padinjare VENTHURUTHY; Digvijay S.
			PP3265	Effects of Novelty Seeking, Perceived Risk, and Travel Anxiety on Behavioral Intention to Use Autonomous Buses	Kai Chieh HU	Kai-Chieh HU	Soochow University School of Business	Kai-Chieh HU; Li Hao YANG; Mingyue LU; Kai Chieh CHIA
			PP3648	Estimating Freight Trip Distribution without Trip Data: An Extended Multivariate Collective Flow Diffusion Model Approach	Rikimaru IKUMOTO	Tomoya KAWASAKI	The University of Tokyo	Rikimaru IKUMOTO; Tomoya KAWASAKI
			PP3355	Solving Location Selection of Urban Consolidation Center by Using Analytic Hierarchy Process	Daariimaa ENKHTUYA	Daariimaa ENKHTUYA	Mongolian University of Science and Technology	Daariimaa ENKHTUYA; Uyanga SUKHBAAATAR; Amarmend GALSANDORJ
			PP3558	Financial Analysis of the Impact of the Transport Capacity on the Profitability of the Railway Business in Bangkok	Kota IWANAMI	Kota IWANAMI	Nihon University College of Science and Technology Graduate School of Science and Technology	Kota IWANAMI; Atsushi FUKUDA
			PP3755	Analysis of Scooter Driving Behavior at Unsignalized Intersections: A Situational-Awareness-Based Traffic Approach	Hsin-Ting HUANG	Hsin Ting HUANG	National Cheng Kung University	Chien-Hung WEI; Hsin Ting HUANG
			PP3402	Spotlighting the Blind Spots? Investigating the Links between Bus Crashes and the Functions of Advanced Driving Assistance Systems	Ching-Fu CHEN	Ching-Fu CHEN	National Cheng Kung University College of Management	Ching-Fu CHEN; I-Ching LIN
			PP3499	Preliminary Study on Peak Hour Trip Generation for Drive-Through Restaurant: Pilot Study in Kuching, Sarawak	Tan Let HUI	Tan Let HUI	Universiti Malaya	Tan Let HUI; Let Hui TAN; Choon Wah YUEN; Rosilawati ZAINOL; Ashita PEREIRA;
			PP3338	Effect Analysis of the V2X Motorcycle Safety Warning System on Collision Prevention at Intersections - Results of Field Trial	Wei Lun HSIAO	Wei Lun HSIAO	National Taiwan University College of Engineering	Tien-Pen HSU; Shih-Yuan CHAO; Wei Lun HSIAO
PP3534	Case Study of Intersection Accident Diagnosis Based on Collision Diagram	Yen-Chin LEI	Ku-Lin WEN	National Cheng Kung University	Tien-Pen HSU; Ku-Lin WEN; San-Ya WEI; Yen-Chin LEI; Tsu-Hung YEH; Chui-Chang KUNG			
Poster Session - D								
Session Number	Day	Time	Paper ID	Article Title	Presenter	Corresponding Author	Corresponding Author's Institution	Authors
			PP3550	An Application of the Malmquist Productivity Index to Measure the Performance of the Public Bus Transportation in India	Ann Mary VARGHESE	Ann Mary VARGHESE	Indian Institute of Technology Kharagpur	Ann Mary VARGHESE

204	Sep.6 (Wed)	9:30-12:00	PP3684	Comparison of Japanese and Indonesian Drivers' Attitude toward Traffic Information and Route-Choice Behavior	Taufik Sugian SUMARDI	Taufik Sugian SUMARDI	Tokyo Metropolitan University Faculty and Graduate School of Urban Environmental Sciences	Taufik Sugian SUMARDI; Hiroyuki ONEYAMA; Masami YANAGIHARA
			PP3475	Capacity Estimation of Bus Stops on Arterial Roads in Hanoi City	Khac-Duong TRAN	Khac-Duong TRAN	The University of Transport and Communications	Khac-Duong TRAN
			PP3809	Study of the Acceptance and Influence of UBI Pricing Factors	Chi-Hung WU	Chi-Hung Evelyn WU	National Taiwan Ocean University	Chi-Hung Evelyn WU; Youn-Han CHEN; Tze-Yi CHEN
			PP3826	An Analysis on Consciousness on Spare-Time Activity and Transportation: A Case of Japan	Ryohei OGINO	Naoyuki TOMARI	Tohoku Institute of Technology	Ryohei OGINO; Naoyuki TOMARI
			PP3419	Weather Impact on Traffic Accidents Using Panel Regression: Case Study in Malaysia	Huoi Theng YEONG	Chungwon LEE	Seoul National Univ.	Huoi Theng YEONG; Dongju KA; Doosun HONG; Chungwon LEE
			PP3400	Research on the Effect of Driving Style Recognition on Safe Driving of Elderly Persons	Yuta ARAKAWA	Kazuyuki TAKADA	Tokyo Denki University	Yuta ARAKAWA; Yukihiko TAKAHASHI; Kazuyuki TAKADA;
			PP3536	A Descriptive Analysis of Heavy Snow Effects on Travel Demand Patterns Using ETC2.0 Probe Data, the Case Study of Sapporo City, Hokkaido, Japan.	Tran Vinh HA	Mikiharu ARIMURA	Muroran Institute of Technology	Tran Vinh HA; Yousuke SATO; Thi Khanh Van HA; Mikiharu ARIMURA
			PP3300	Analysis of Mode Choice Characteristics for Transportation to the Airports in the Tokyo Metropolitan Area	Yasuhiro HUIKATA	Yasuhiro HUIKATA	Institution of Civil Engineers	Yasuhiro HUIKATA; Fumihiko NAKAMURA; Ryo ARIYOSHI; Shinji TANAKA; Mihoko MATSUYUKI; Ryoosuke ABE
			PP3448	A Fundamental Study about the Behavior of Drivers with Mild Cognitive Impairment or Primary Dementia	Mio SUZUKI	Mio SUZUKI	Tokai University; Tokai Daigaku	Mio SUZUKI
			PP3509	Assessment of Public Transport Usage in Japanese Rural Areas with Long-Term Smart Card Data	Hiroaki NISHIUCHI	Hiroaki NISHIUCHI	Kochi University of Technology	Hiroaki NISHIUCHI; An Minh NGOC; Mao YASUNAMI
			PP3813	Policy Analysis to Increase the Effectiveness of PSO Subsidies for Jabodetabek Commuterline Using System Dynamics Modelling	Desi MARANTIKA	Sutanto SOEHODHO	University of Indonesia: Universitas Indonesia	Desi MARANTIKA; Sutanto SOEHODHO
			PP3341	Changes in Rail Usage During Coronavirus Disease (COVID-19) Spread Based on Historical Ticket Gate Data in a Station	Wataru SUZUKI	Wataru SUZUKI	Yokohama National University Institute of Urban Innovation	Wataru SUZUKI; Fumihiko NAKAMURA; Ryo ARIYOSHI; Shinji TANAKA; Mihoko MATSUYUKI
			PP3752	Indoor Smart Navigation for the Transportation Vulnerable Using Geomagnetic Field Based Indoor Positioning System	Wonjoon SON	Wonjoon SON	Seoul Campus: Korea University	Wonjoon SON; Jinwon SEONG; Youngwoong KO; Lynn CHOI; Wonseok YOO; SungpilCHOI
			PP3750	Safety in Numbers: the Attitude of Bicycle Riders towards Other Cyclists while Deciding Route for Travel	Rashmeet Kaur KHANUJA	Rashmeet Kaur KHANUJA	Indian Institute of Technology Delhi	Rashmeet Kaur KHANUJA; Geetam TIWARI
			PP3631	Modelling Free Flow Speed for Four Lane Divided Urban Sub-Arterial Road (Case Study of Kaushaltar-Ghalate Section of Koteswar-Suryabinayak Road)	Sitan SHRESTHA	Sitan SHRESTHA	Ecozone Architech and Construction Pvt. Ltd.	Sitan SHRESTHA; Padma Bahadur SHAHI
			PP3786	Grade-Separated Intersections Analysis Using Vissim (Case Study at Simpang Patal - Sumsel, Indonesia)	Dimas Ariezky SUSETYO	Dimas Ariezky SUSETYO	State Polytechnic Sriwijaya: Politeknik Negeri Sriwijaya	Dimas Ariezky SUSETYO; Luthfiyiah ULFAH
PP3719	Effect of Porosity and Compaction Method on Noise and Light Reflectance of Pervious Concrete	Shuddhashil GHOSH	Priyansh SINGH	Indian Institute of Technology Indore	Shuddhashil GHOSH; Vishwas BATHAM; Priyansh SINGH			
PP3619	Effects of Selective Police Control on Critical Gaps of Large-Diameter Multi-Lane Roundabouts Using Lane-Based Analysis	Jit Boon BONG	Elizabeth Eu Mee CHONG	Swinburne University of Technology - Sarawak Campus	Jit Boon BONG; Elizabeth Eu Mee CHONG; Chung Siung CHOO			
Poster Session - E								
Session Number	Day	Time	Paper ID	Article Title	Presenter	Corresponding Author	Corresponding Author's Institution	Authors
205	Sep.6 (Wed)	14:00-16:30	PP3597	Crisis Management Strategy - A Case Study of Taiwan Ports	Chun-Yueh CHANG	Chun-Yueh CHANG	National Sun Yat-Sen University	Chang CHUN-YUEH; Hsiao-Wen HO; Shin-I SHIH
			PP3538	A Macroscopic Crash Frequency Model for Unobserved Heterogeneity on Indian National Highways	Shubham PARASHAR	Shubham PARASHAR	Indian Institute of Technology Roorkee	Shubham PARASHAR; Amit AGARWAL
			PP3430	Assessing the Relative Growth in Motorcycle Ownership as Compared to the Growth in Private Car Ownership: A Cross-Country	May Yen CHU	May Yen CHU	Heriot-Watt University Malaysia	May Yen CHU; Teik Hua LAW; Siang Hook LAW; Jin Chai LEE
			PP3690	Modelling the Adoption of Alternate Fuel Vehicles: A Systematic Review and Future Directions	Vijai Krishnan V	M. SREEKUMAR	National Institute of Technology Karnataka	Vijai Krishnan V; M SREEKUMAR
			PP3829	The Effect of Transfer Time on the Demand of a Railway Station	Wonchul KIM	Wonchul KIM	Chungnam Institute	Wonchul KIM
			PP3725	Data-Driven Development of a Safe Distance Following Model for Motorized Two Wheelers in Urban Mixed Traffic	Jaikishan DAMANI	Jaikishan DAMANI	Iit Bombay: Indian Institute of Technology Bombay	Jaikishan DAMANI; Perumal VEDAGIRI
			PP3529	Simulation Analysis of Tsunami Evacuation Behavior for Residents and Seabathers Under Mixed Pedestrian-Automobile	Kazane TOIDA	Kazane TOIDA	University of Tsukuba: Tsukuba Daigaku	Kazane TOIDA; Naohisa OKAMOTO; Michitaka UMEMOTO
			PP3393	On the Risk of Traffic Accidents on Provisional Two-Lane	Takuya MATSUURA	Hajime SEYA	Kobe Daigaku	Takuya MATSUURA; Hajime SEYA
			PP3778	A Study on the Development of Deep Underground Railway Complex Station Disaster Response Technology	Yoonsic OH	Yoonsic OH	Korea Railroad Research Institute	Yoonsic OH; Hyeong-Seok LIM; Chong-Soo CHEUNG; Jang-Wook KIM
			PP3335	An Ant Colony Optimization Technique to Solve the Line Planning Problem	Uyanga SUKHBAATAR	Uyanga SUKHBAATAR	Mongolian University of Science and Technology	Uyanga SUKHBAATAR; Daariimaa ENKHTUYA; Amarmend
			PP3784	Exploratory Data Analysis for Exploring a New Expressway Using Mobility Big Data	Sugyo JEONG	Sugyo JEONG	Korea Research Institute for Human Settlements	Sugyo JEONG; Baekjin LEE; Yohan CHANG; Youngsoo LEE
			PP3357	Some Issues on Improving Parking Management in Ulaanbaatar City	Unursaikhan DAMBADORJ	Unursaikhan DAMBADORJ	School of Mechanical Engineering at Must	Unursaikhan DAMBADORJ; Ariunbambaa GUNCHINSUREN
			PP3545	Estimation of the PCU for Dominant Vehicles with the Improved Object Detection Model on Three-Lane Urban Road in Hanoi, Vietnam	Le Van HIEU	Hieu Van LE	Nagaoka University of Technology Department of Civil and Environmental Engineering	Hieu Van LE; Sano KAZUSHI; Duy Ngyen Tran THANH; Quynh Phan Thi NHU
			PP3543	Perception of Pedestrian towards Pedestrian Crossings in Kuala Lumpur	Nur ELLYSHA	Nur ELLYSHA	Universiti Malaya	Nur ELLYSHA; Yong Adilah Shamsul HARUMAIN
			PP3769	Systemic Relation of Estimated Travel Speed and Actual Travel Speed under Traffic Accident	Junhyeong MOON	Hyungjoo KIM	Advanced Institutes of Convergence Technology	Junhyeong MOON; Jongho KIM; Woosuk KIM; Hyungjoo KIM
			PP3777	Can Implementing an Exclusive Motorcycle Lane on Non-Urban Highways Improve Safety?	Harish Kumar SAINI	Harish Kumar SAINI	Indian Institute of Technology Jammu	Harish Kumar SAINI; Ankit KATHURIA; Ashoke Kumar SARKAR
PP3572	Sustainability and Safety Implications of Electric Three-Wheeler Paratransit Modes: A Critical Literature Review on E-Rickshaws	Danial DOLEY	Danial DOLEY	Indian Institute of Technology Guwahati	Danial DOLEY; A K MAURYA; Suresh NAMA			
PP3717	Assessing the Agreement among Road Safety Performance Indicators	Rahma MKWATA	Elizabeth Eu Mee CHONG	Swinburne University of Technology - Sarawak Campus	Rahma MKWATA; Elizabeth Eu Mee CHONG			

EASTS 2023

Room	Capacity
Banquet Hall or Seminar Room 8 (S8)	1000 pax (
Seminar Room 1 (S1)	54 pax (Long tables and chairs), 75 pax (Chairs only)
Seminar Room 2 (S2)	27 pax (Long tables and chairs), 50 pax (Chairs only)
Seminar Room 3 (S3)	27 pax (Long tables and chairs), 50 pax (Chairs only)
Seminar Room 4 (S4)	27 pax (Long tables and chairs), 50 pax (Chairs only)
Seminar Room 5 (S5)	27 pax (Long tables and chairs), 50 pax (Chairs only)
Seminar Room 6 (S6)	27 pax (Long tables and chairs), 50 pax (Chairs only)
Seminar Room 7 (S7)*	75 pax (Chairs only)
Seminar Room 9 (S9)*	100 pax (Chairs only)

* Converted seminar room



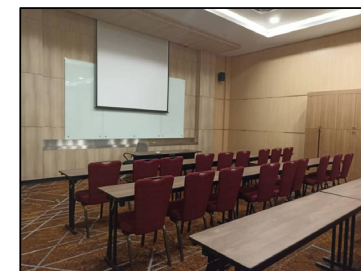
Banquet Hall or Seminar Room 8



Seminar Room 1

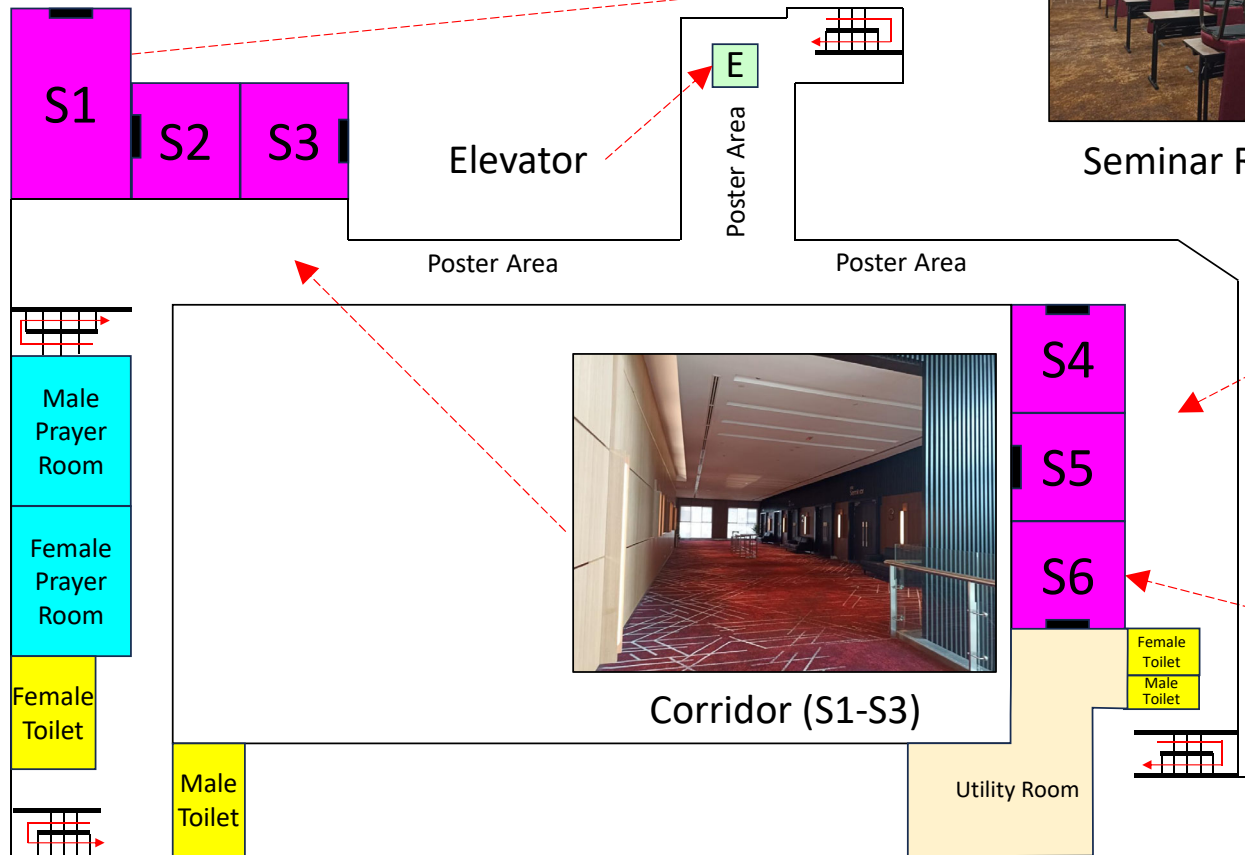


Seminar Room 3



Seminar Room 6

FIRST FLOOR PLAN



Seminar Room 1 (S1)

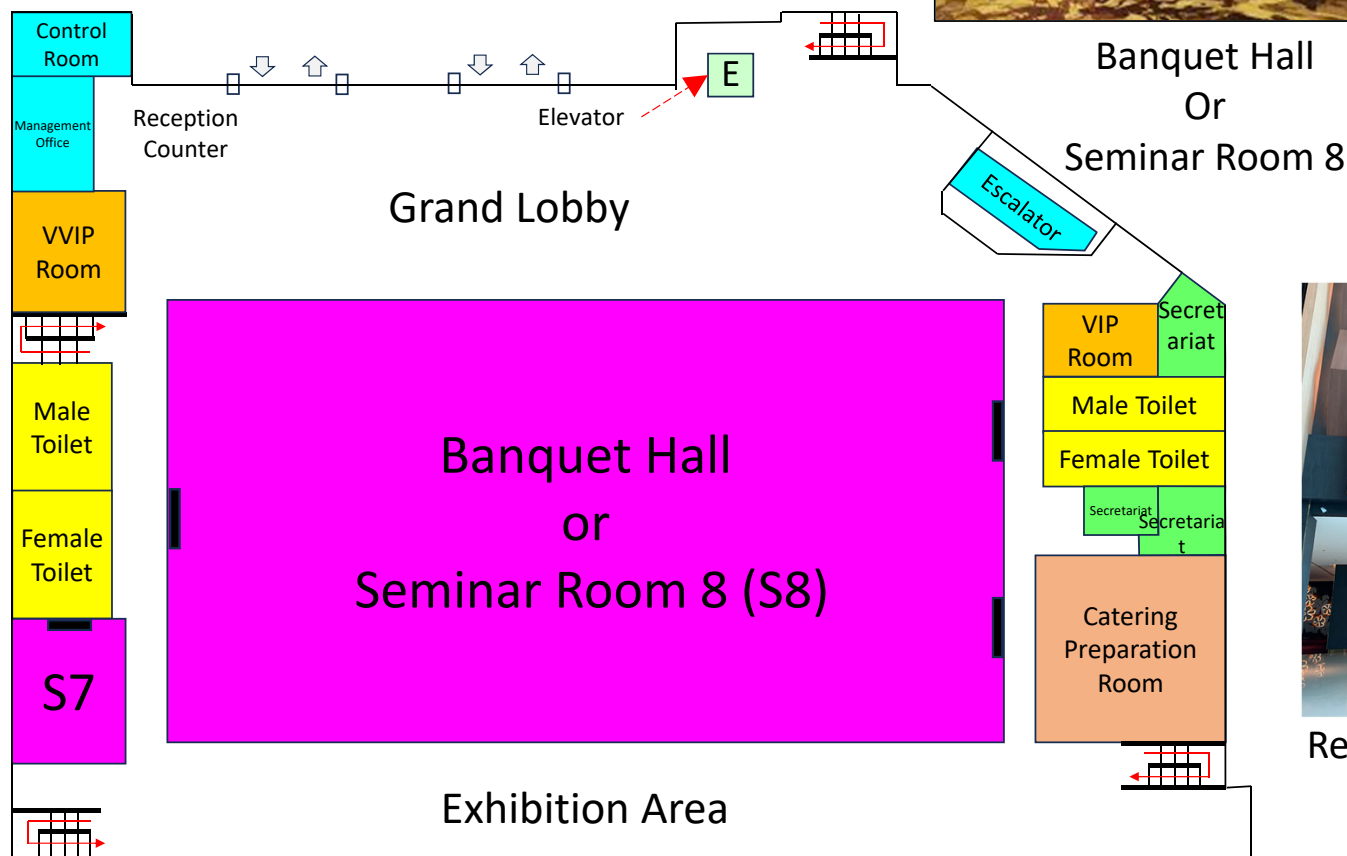


Corridor (S4-S6)



Seminar Room 4-6 (S4-S6)
Open Partition

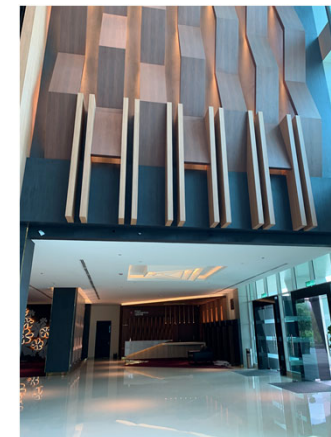
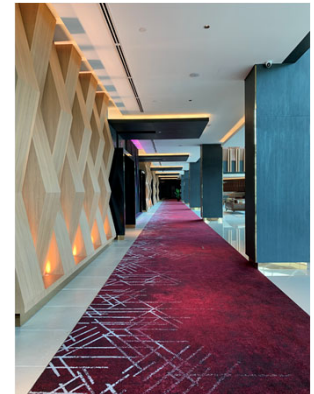
GROUND FLOOR PLAN



Banquet Hall
Or
Seminar Room 8

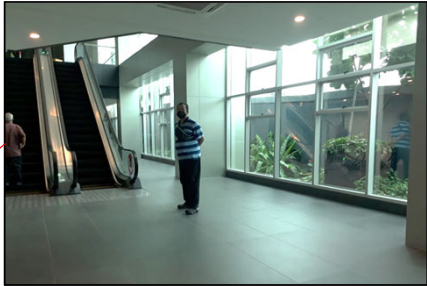
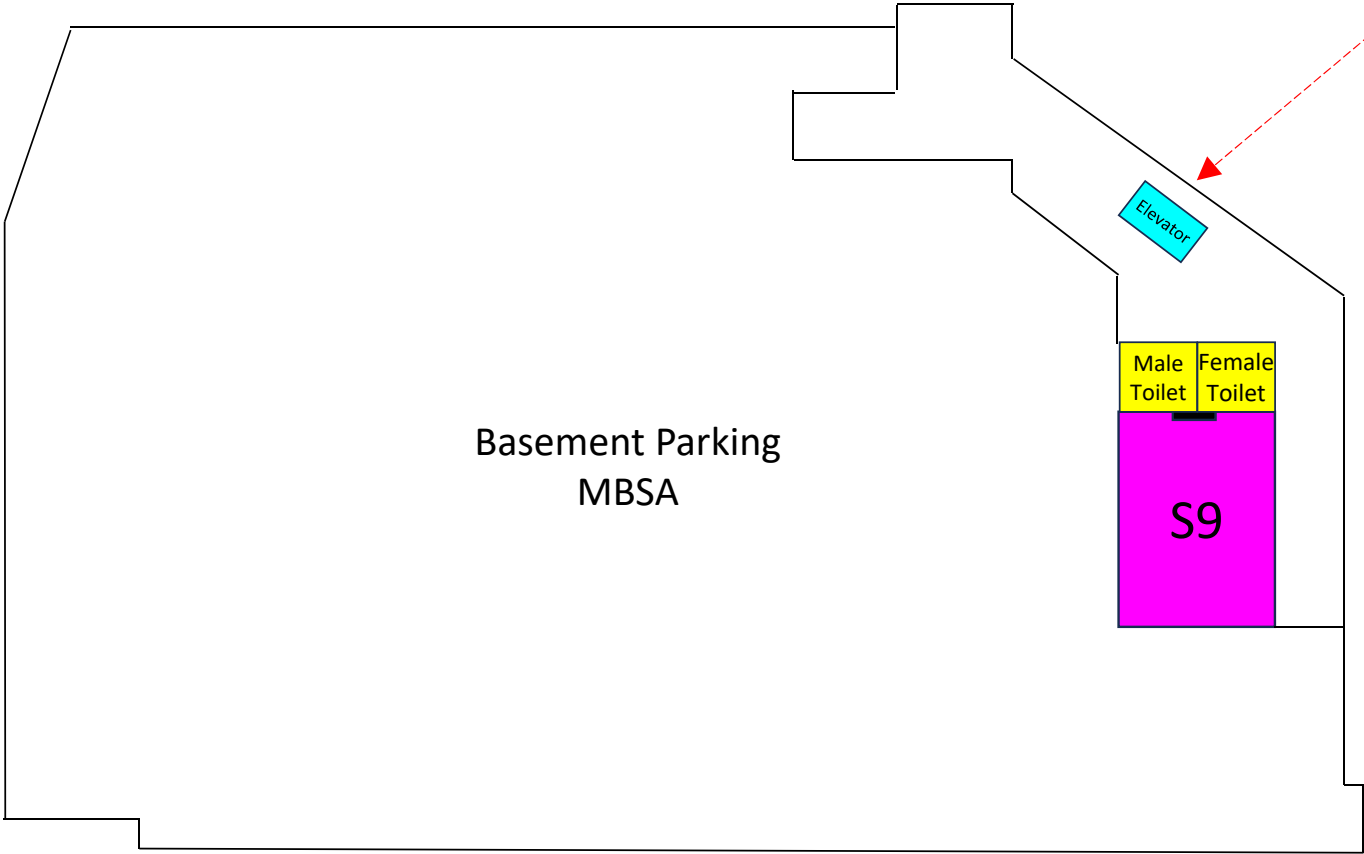


Grand Lobby



Reception Counter

BASEMENT FLOOR PLAN



Escalator



Seminar Room 9 (S9)

